

ADI1 Polyclonal Antibody
Catalog # AP74185**Specification****ADI1 Polyclonal Antibody - Product Information**

Application	IHC-P
Primary Accession	Q9BV57
Reactivity	Human, Mouse, Rat
Host	Rabbit
Clonality	Polyclonal

ADI1 Polyclonal Antibody - Additional Information**Gene ID** 55256**Other Names**

1, 2-dihydroxy-3-keto-5-methylthiopentene dioxygenase (EC 1.13.11.54) (Acireductone dioxygenase (Fe(2+)-requiring)) (ARD) (Fe-ARD) (Membrane-type 1 matrix metalloproteinase cytoplasmic tail-binding protein 1) (MTCBP-1) (Submergence-induced protein-like factor) (Sip-L)

Dilution

IHC-P~~N/A

Format

Liquid in PBS containing 50% glycerol, 0.5% BSA and 0.09% (W/V) sodium azide.

Storage Conditions

-20°C

ADI1 Polyclonal Antibody - Protein Information**Name** ADI1 {ECO:0000255|HAMAP-Rule:MF_03154}**Function**

Catalyzes 2 different reactions between oxygen and the acireductone 1,2-dihydroxy-3-keto-5-methylthiopentene (DHK-MTPene) depending upon the metal bound in the active site (By similarity). Fe- containing acireductone dioxygenase (Fe-ARD) produces formate and 2- keto-4-methylthiobutyrate (KMTB), the alpha-ketoacid precursor of methionine in the methionine recycle pathway (PubMed:15938715). Ni- containing acireductone dioxygenase (Ni-ARD) produces methylthiopropionate, carbon monoxide and formate, and does not lie on the methionine recycle pathway (By similarity). Also down-regulates cell migration mediated by MMP14 (PubMed:14718544). Necessary for hepatitis C virus replication in an otherwise non-permissive cell line (PubMed:11602742).

Cellular Location

Cytoplasm. Nucleus. Cell membrane; Peripheral membrane protein; Cytoplasmic side.

Note=Localizes to the plasma membrane when complexed to MMP14.

Tissue Location

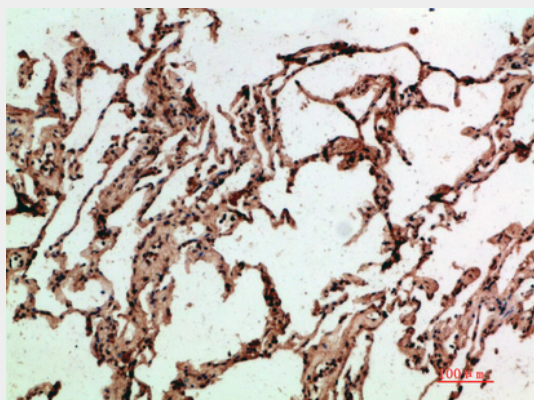
Detected in heart, colon, lung, stomach, brain, spleen, liver, skeletal muscle and kidney

ADI1 Polyclonal Antibody - Protocols

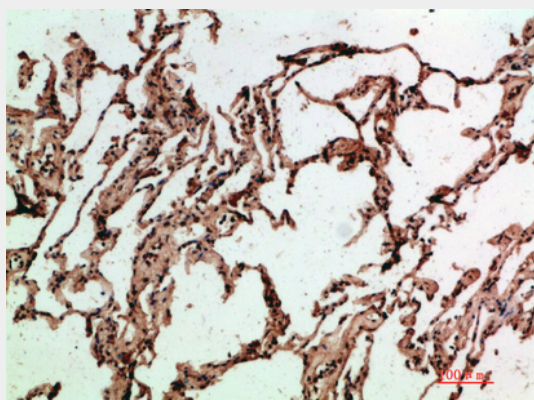
Provided below are standard protocols that you may find useful for product applications.

- [Western Blot](#)
- [Blocking Peptides](#)
- [Dot Blot](#)
- [Immunohistochemistry](#)
- [Immunofluorescence](#)
- [Immunoprecipitation](#)
- [Flow Cytometry](#)
- [Cell Culture](#)

ADI1 Polyclonal Antibody - Images



Immunohistochemical analysis of paraffin-embedded human-lung, antibody was diluted at 1:200



Immunohistochemical analysis of paraffin-embedded human-lung, antibody was diluted at 1:200

ADI1 Polyclonal Antibody - Background

Catalyzes the formation of formate and 2-keto-4- methylthiobutyrate (KMTB) from 1,2-dihydroxy-3-keto-5- methylthiopentene (DHK-MTPene). Also down-regulates cell migration mediated by MMP14. Necessary for hepatitis C virus replication in an otherwise non-permissive cell

line.