

**ATG10 Polyclonal Antibody**  
**Catalog # AP74188****Specification**

---

**ATG10 Polyclonal Antibody - Product Information**

Application	IHC-P
Primary Accession	<a href="#">Q9H0Y0</a>
Reactivity	Human
Host	Rabbit
Clonality	Polyclonal

**ATG10 Polyclonal Antibody - Additional Information****Gene ID** 83734**Other Names**

Ubiquitin-like-conjugating enzyme ATG10 (EC 6.3.2.-) (Autophagy-related protein 10) (APG10-like)

**Dilution**

IHC-P~~N/A

**Format**

Liquid in PBS containing 50% glycerol, 0.5% BSA and 0.09% (W/V) sodium azide.

**Storage Conditions**

-20°C

**ATG10 Polyclonal Antibody - Protein Information****Name** ATG10**Synonyms** APG10L**Function**

E2-like enzyme involved in autophagy. Acts as an E2-like enzyme that catalyzes the conjugation of ATG12 to ATG5. ATG12 conjugation to ATG5 is required for autophagy. Likely serves as an ATG5-recognition molecule. Not involved in ATG12 conjugation to ATG3 (By similarity). Plays a role in adenovirus-mediated cell lysis.

**Cellular Location**

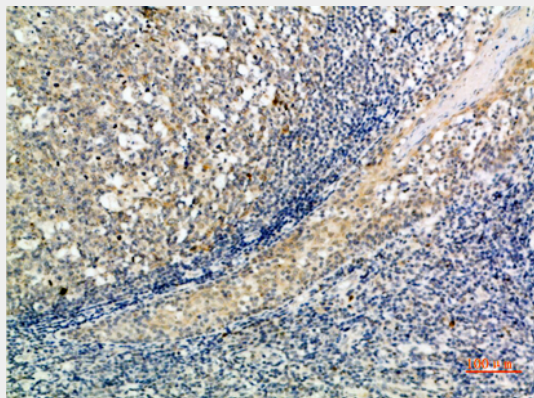
Cytoplasm.

**ATG10 Polyclonal Antibody - Protocols**

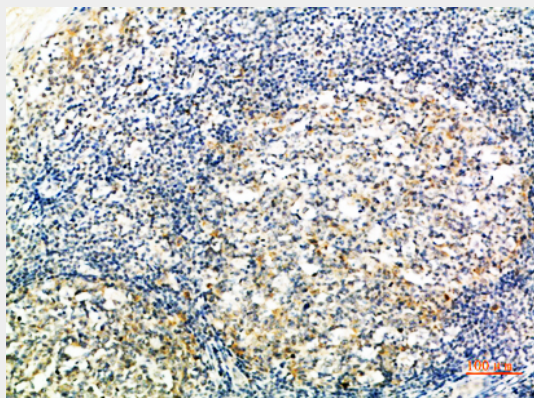
Provided below are standard protocols that you may find useful for product applications.

- [Western Blot](#)
- [Blocking Peptides](#)
- [Dot Blot](#)
- [Immunohistochemistry](#)
- [Immunofluorescence](#)
- [Immunoprecipitation](#)
- [Flow Cytometry](#)
- [Cell Culture](#)

#### **ATG10 Polyclonal Antibody - Images**



Immunohistochemical analysis of paraffin-embedded human-tonsil, antibody was diluted at 1:200



Immunohistochemical analysis of paraffin-embedded human-tonsil, antibody was diluted at 1:200

#### **ATG10 Polyclonal Antibody - Background**

E2-like enzyme involved in autophagy. Acts as an E2-like enzyme that catalyzes the conjugation of ATG12 to ATG5. ATG12 conjugation to ATG5 is required for autophagy. Likely serves as an ATG5-recognition molecule. Not involved in ATG12 conjugation to ATG3 (By similarity). Plays a role in adenovirus-mediated cell lysis.