

GM-CSF Polyclonal Antibody
Catalog # AP74190**Specification**

GM-CSF Polyclonal Antibody - Product Information

Application	IHC-P
Primary Accession	P04141
Reactivity	Human
Host	Rabbit
Clonality	Polyclonal

GM-CSF Polyclonal Antibody - Additional Information**Gene ID** 1437**Other Names**

Granulocyte-macrophage colony-stimulating factor (GM-CSF) (Colony-stimulating factor) (CSF) (Molgramostin) (Sargramostim)

Dilution

IHC-P~~N/A

Format

Liquid in PBS containing 50% glycerol, 0.5% BSA and 0.09% (W/V) sodium azide.

Storage Conditions

-20°C

GM-CSF Polyclonal Antibody - Protein Information**Name** CSF2**Synonyms** GMCSF**Function**

Cytokine that stimulates the growth and differentiation of hematopoietic precursor cells from various lineages, including granulocytes, macrophages, eosinophils and erythrocytes.

Cellular Location

Secreted

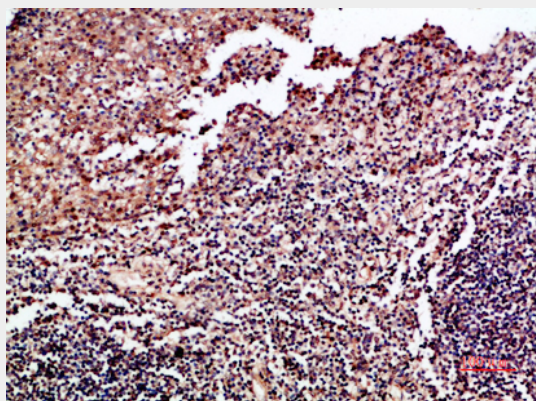
GM-CSF Polyclonal Antibody - Protocols

Provided below are standard protocols that you may find useful for product applications.

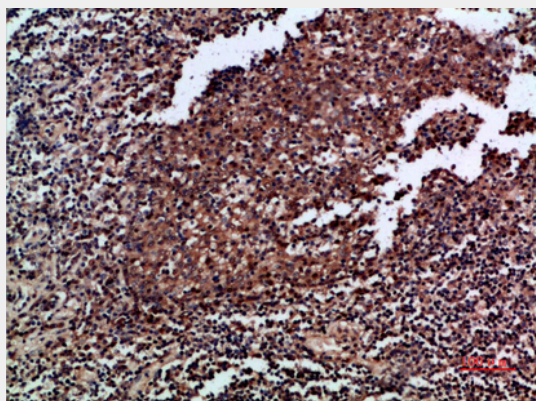
- [Western Blot](#)

- [Blocking Peptides](#)
- [Dot Blot](#)
- [Immunohistochemistry](#)
- [Immunofluorescence](#)
- [Immunoprecipitation](#)
- [Flow Cytometry](#)
- [Cell Culture](#)

GM-CSF Polyclonal Antibody - Images



Immunohistochemical analysis of paraffin-embedded human-tonsil, antibody was diluted at 1:200



Immunohistochemical analysis of paraffin-embedded human-tonsil, antibody was diluted at 1:200

GM-CSF Polyclonal Antibody - Background

Cytokine that stimulates the growth and differentiation of hematopoietic precursor cells from various lineages, including granulocytes, macrophages, eosinophils and erythrocytes.