

MIA Polyclonal Antibody
Catalog # AP74198**Specification**

MIA Polyclonal Antibody - Product Information

Application	IHC-P
Primary Accession	Q16674
Reactivity	Human
Host	Rabbit
Clonality	Polyclonal

MIA Polyclonal Antibody - Additional Information**Gene ID** 8190**Other Names**

Melanoma-derived growth regulatory protein (Melanoma inhibitory activity protein)

Dilution

IHC-P~~N/A

Format

Liquid in PBS containing 50% glycerol, 0.5% BSA and 0.09% (W/V) sodium azide.

Storage Conditions

-20°C

MIA Polyclonal Antibody - Protein Information**Name** MIA**Function**

Elicits growth inhibition on melanoma cells in vitro as well as some other neuroectodermal tumors, including gliomas.

Cellular Location

Secreted.

Tissue Location

All malignant melanoma cell lines tested and infrequently in glioma cell lines

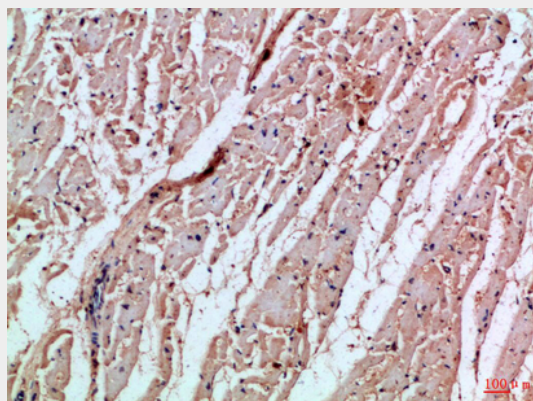
MIA Polyclonal Antibody - Protocols

Provided below are standard protocols that you may find useful for product applications.

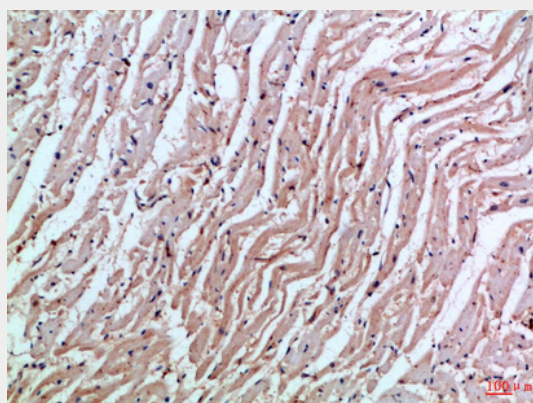
- [Western Blot](#)

- [Blocking Peptides](#)
- [Dot Blot](#)
- [Immunohistochemistry](#)
- [Immunofluorescence](#)
- [Immunoprecipitation](#)
- [Flow Cytometry](#)
- [Cell Culture](#)

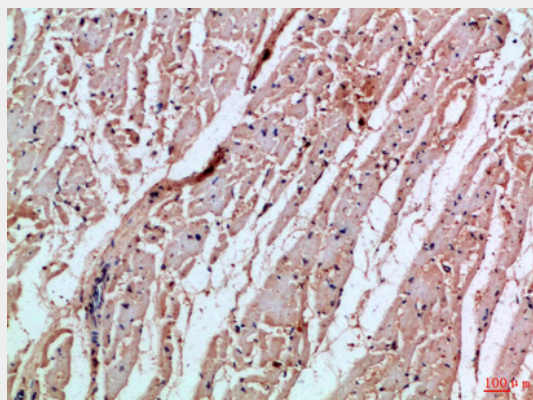
MIA Polyclonal Antibody - Images



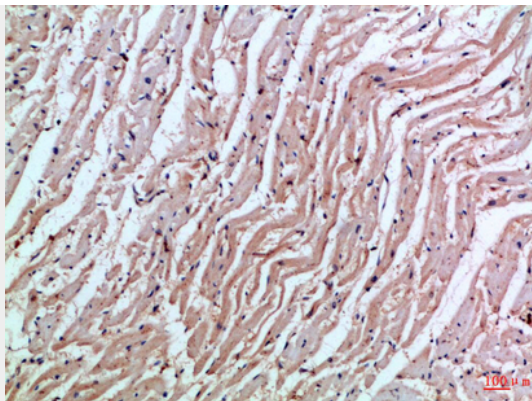
Immunohistochemical analysis of paraffin-embedded Human-heart, antibody was diluted at 1:100



Immunohistochemical analysis of paraffin-embedded Human-heart, antibody was diluted at 1:100



Immunohistochemical analysis of paraffin-embedded Human-heart, antibody was diluted at 1:100



Immunohistochemical analysis of paraffin-embedded Human-heart, antibody was diluted at 1:100

MIA Polyclonal Antibody - Background

Elicits growth inhibition on melanoma cells in vitro as well as some other neuroectodermal tumors, including gliomas.