

GRB7 Polyclonal Antibody
Catalog # AP74203**Specification**

GRB7 Polyclonal Antibody - Product Information

Application	IHC-P
Primary Accession	Q14451
Reactivity	Human, Mouse, Rat
Host	Rabbit
Clonality	Polyclonal

GRB7 Polyclonal Antibody - Additional Information**Gene ID** 2886**Other Names**

Growth factor receptor-bound protein 7 (B47) (Epidermal growth factor receptor GRB-7) (GRB7 adapter protein)

Dilution

IHC-P~~N/A

Format

Liquid in PBS containing 50% glycerol, 0.5% BSA and 0.09% (W/V) sodium azide.

Storage Conditions

-20°C

GRB7 Polyclonal Antibody - Protein Information**Name** GRB7**Function**

Adapter protein that interacts with the cytoplasmic domain of numerous receptor kinases and modulates down-stream signaling. Promotes activation of down-stream protein kinases, including STAT3, AKT1, MAPK1 and/or MAPK3. Promotes activation of HRAS. Plays a role in signal transduction in response to EGF. Plays a role in the regulation of cell proliferation and cell migration. Plays a role in the assembly and stability of RNA stress granules. Binds to the 5'UTR of target mRNA molecules and represses translation of target mRNA species, when not phosphorylated. Phosphorylation impairs RNA binding and promotes stress granule disassembly during recovery after cellular stress (By similarity).

Cellular Location

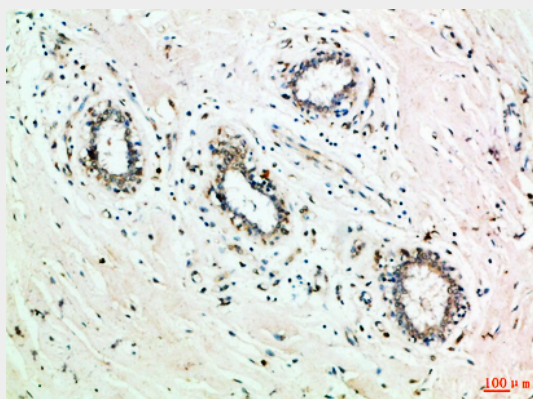
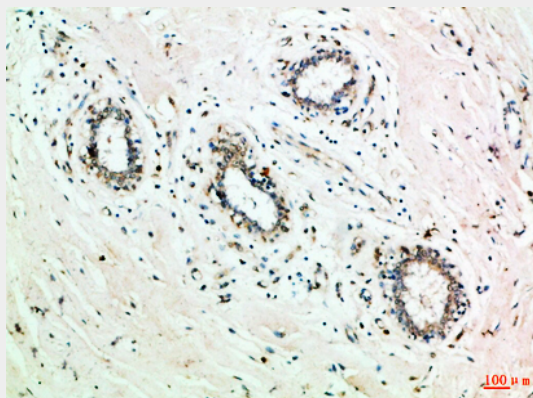
Cytoplasm. Cell junction, focal adhesion. Cell membrane; Peripheral membrane protein; Cytoplasmic side. Cytoplasmic granule {ECO:0000250|UniProtKB:Q03160}. Cell projection. Note=Predominantly cytoplasmic. Detected in stress granules, where mRNA is stored under stress conditions {ECO:0000250|UniProtKB:Q03160}

GRB7 Polyclonal Antibody - Protocols

Provided below are standard protocols that you may find useful for product applications.

- [Western Blot](#)
- [Blocking Peptides](#)
- [Dot Blot](#)
- [Immunohistochemistry](#)
- [Immunofluorescence](#)
- [Immunoprecipitation](#)
- [Flow Cytometry](#)
- [Cell Culture](#)

GRB7 Polyclonal Antibody - Images



GRB7 Polyclonal Antibody - Background

Adapter protein that interacts with the cytoplasmic domain of numerous receptor kinases and modulates down-stream signaling. Promotes activation of down-stream protein kinases, including STAT3, AKT1, MAPK1 and/or MAPK3. Promotes activation of HRAS. Plays a role in signal transduction in response to EGF. Plays a role in the regulation of cell proliferation and cell migration. Plays a role in the assembly and stability of RNA stress granules. Binds to the 5'UTR of target mRNA molecules and represses translation of target mRNA species, when not phosphorylated. Phosphorylation impairs RNA binding and promotes stress granule disassembly during recovery after cellular stress (By similarity).