

ANXA2 Antibody (C-term)
Purified Rabbit Polyclonal Antibody (Pab)
Catalog # AP7420b**Specification**

ANXA2 Antibody (C-term) - Product Information

Application	WB, IF, IHC-P,E
Primary Accession	P07355
Other Accession	A6NMY6 , Q07936 , P19620 , P07356
Reactivity	Human
Predicted	Mouse, Pig, Rat
Host	Rabbit
Clonality	Polyclonal
Isotype	Rabbit IgG
Calculated MW	38604
Antigen Region	287-313

ANXA2 Antibody (C-term) - Additional Information**Gene ID** 302**Other Names**

Annexin A2, Annexin II, Annexin-2, Calpactin I heavy chain, Calpactin-1 heavy chain, Chromobindin-8, Lipocortin II, Placental anticoagulant protein IV, PAP-IV, Protein I, p36, ANXA2, ANX2, ANX2L4, CAL1H, LPC2D

Target/Specificity

This ANXA2 antibody is generated from rabbits immunized with a KLH conjugated synthetic peptide between 287-313 amino acids from the C-terminal region of human ANXA2.

Dilution

WB~~1:1000
IF~~1:10~50
IHC-P~~1:10~50
E~~Use at an assay dependent concentration.

Format

Purified polyclonal antibody supplied in PBS with 0.09% (W/V) sodium azide. This antibody is prepared by Saturated Ammonium Sulfate (SAS) precipitation followed by dialysis against PBS.

Storage

Maintain refrigerated at 2-8°C for up to 2 weeks. For long term storage store at -20°C in small aliquots to prevent freeze-thaw cycles.

Precautions

ANXA2 Antibody (C-term) is for research use only and not for use in diagnostic or therapeutic procedures.

ANXA2 Antibody (C-term) - Protein Information

Name ANXA2

Synonyms ANX2, ANX2L4, CAL1H, LPC2D

Function Calcium-regulated membrane-binding protein whose affinity for calcium is greatly enhanced by anionic phospholipids. It binds two calcium ions with high affinity. May be involved in heat-stress response. Inhibits PCSK9-enhanced LDLR degradation, probably reduces PCSK9 protein levels via a translational mechanism but also competes with LDLR for binding with PCSK9 (PubMed:[18799458](#), PubMed:[22848640](#), PubMed:[24808179](#)). Binds to endosomes damaged by phagocytosis of particulate wear debris and participates in endosomal membrane stabilization, thereby limiting NLRP3 inflammasome activation (By similarity). Required for endothelial cell surface plasmin generation and may support fibrinolytic surveillance and neoangiogenesis (By similarity).

Cellular Location

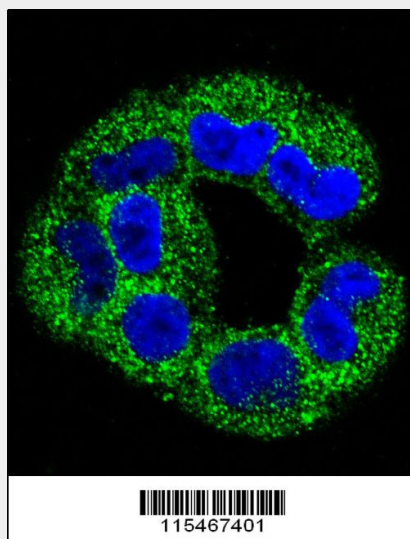
Secreted, extracellular space, extracellular matrix, basement membrane. Melanosome. Note=In the lamina beneath the plasma membrane. Identified by mass spectrometry in melanosome fractions from stage I to stage IV. Translocated from the cytoplasm to the cell surface through a Golgi-independent mechanism

ANXA2 Antibody (C-term) - Protocols

Provided below are standard protocols that you may find useful for product applications.

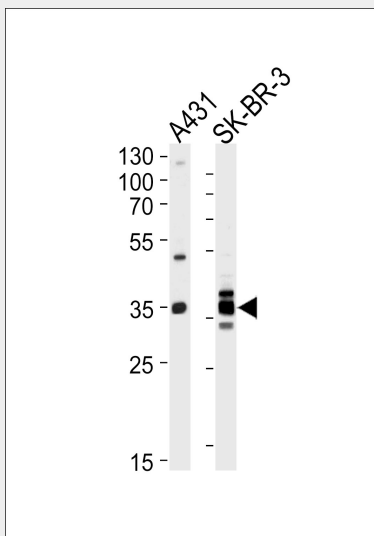
- [Western Blot](#)
- [Blocking Peptides](#)
- [Dot Blot](#)
- [Immunohistochemistry](#)
- [Immunofluorescence](#)
- [Immunoprecipitation](#)
- [Flow Cytometry](#)
- [Cell Culture](#)

ANXA2 Antibody (C-term) - Images

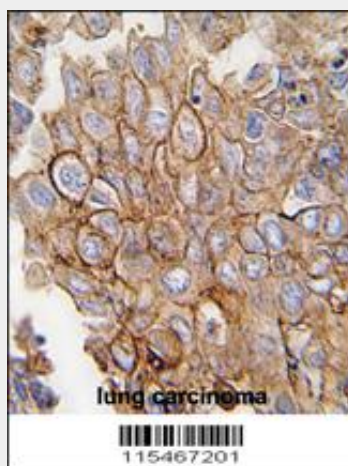


Confocal immunofluorescent analysis of ANXA2 Antibody (C-term)(Cat#AP7420b) with A2058 cell

followed by Alexa Fluor 488-conjugated goat anti-rabbit IgG (green). DAPI was used to stain the cell nuclear (blue).



Western blot analysis of lysates from A431, SK-BR-3 cell line (from left to right), using ANXA2 Antibody (C-term)(Cat. #AP7420b). AP7420b was diluted at 1:1000 at each lane. A goat anti-rabbit IgG H&L(HRP) at 1:5000 dilution was used as the secondary antibody. Lysates at 35ug per lane.



Formalin-fixed and paraffin-embedded human lung carcinoma tissue reacted with ANXA2 antibody (C-term) (Cat.#AP7420b), which was peroxidase-conjugated to the secondary antibody, followed by DAB staining. This data demonstrates the use of this antibody for immunohistochemistry; clinical relevance has not been evaluated.

ANXA2 Antibody (C-term) - Background

ANXA2 is a member of the annexin family. Members of this calcium-dependent phospholipid-binding protein family play a role in the regulation of cellular growth and in signal transduction pathways. This protein functions as an autocrine factor which heightens osteoclast formation and bone resorption.

ANXA2 Antibody (C-term) - References

- He,K.L., J. Biol. Chem. 283 (28), 19192-19200 (2008)
- Tamma,G., Pflugers Arch. 456 (4), 729-736 (2008)
- Gou,D., J. Biol. Chem. 283 (19), 13156-13164 (2008)