

**Granzyme M Polyclonal Antibody**  
**Catalog # AP74232****Specification**

---

**Granzyme M Polyclonal Antibody - Product Information**

Application	IHC-P
Primary Accession	<a href="#">P51124</a>
Reactivity	Human
Host	Rabbit
Clonality	Polyclonal

**Granzyme M Polyclonal Antibody - Additional Information****Gene ID** 3004**Other Names**

Granzyme M (EC 3.4.21.-) (Met-1 serine protease) (Hu-Met-1) (Met-ase) (Natural killer cell granular protease)

**Dilution**

IHC-P~~N/A

**Format**

Liquid in PBS containing 50% glycerol, 0.5% BSA and 0.09% (W/V) sodium azide.

**Storage Conditions**

-20°C

**Granzyme M Polyclonal Antibody - Protein Information****Name** GZMM**Synonyms** MET1**Function**

Cleaves peptide substrates after methionine, leucine, and norleucine. Physiological substrates include EZR, alpha-tubulins and the apoptosis inhibitor BIRC5/Survivin. Promotes caspase activation and subsequent apoptosis of target cells.

**Cellular Location**

Secreted. Cytoplasmic granule. Note=Granules of large granular lymphocytes

**Tissue Location**

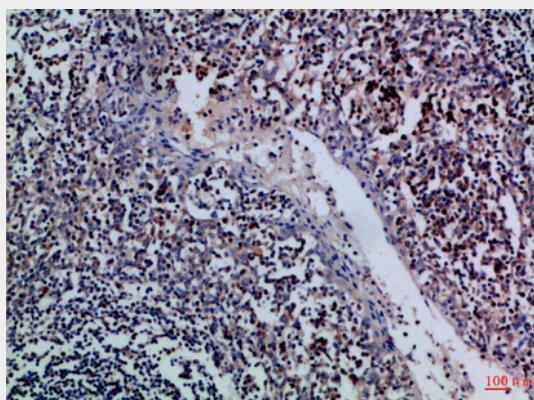
Highly and constitutively expressed in activated natural killer (NK) cells.

**Granzyme M Polyclonal Antibody - Protocols**

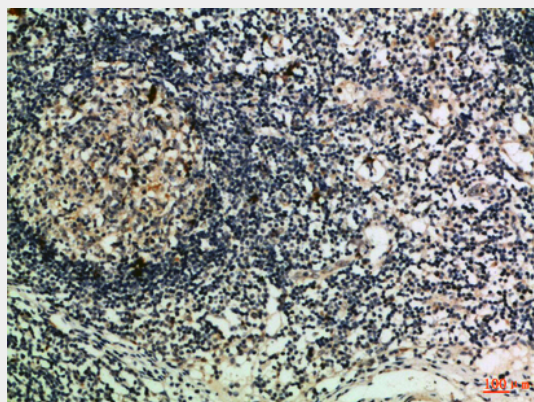
Provided below are standard protocols that you may find useful for product applications.

- [Western Blot](#)
- [Blocking Peptides](#)
- [Dot Blot](#)
- [Immunohistochemistry](#)
- [Immunofluorescence](#)
- [Immunoprecipitation](#)
- [Flow Cytometry](#)
- [Cell Culture](#)

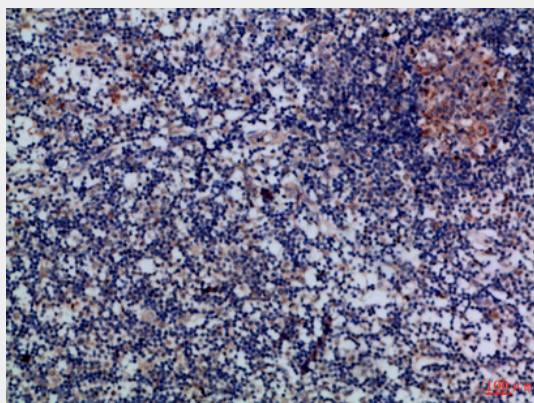
#### **Granzyme M Polyclonal Antibody - Images**



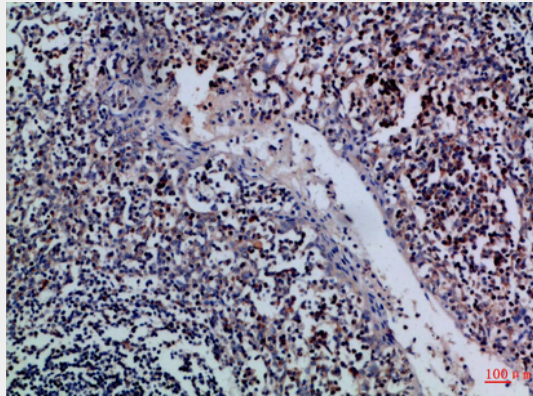
Immunohistochemical analysis of paraffin-embedded Human-tonsil, antibody was diluted at 1:100



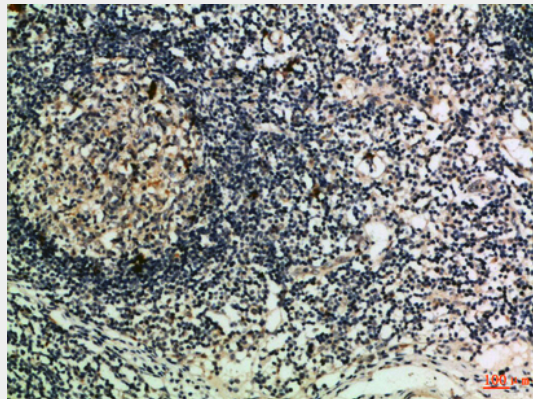
Immunohistochemical analysis of paraffin-embedded Human-lymph, antibody was diluted at 1:100



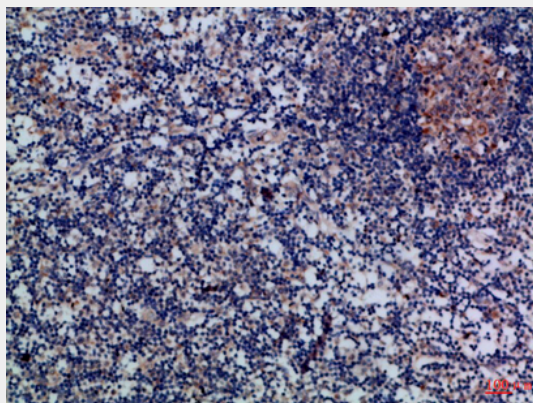
Immunohistochemical analysis of paraffin-embedded Human-lymph, antibody was diluted at 1:100



Immunohistochemical analysis of paraffin-embedded Human-tonsil, antibody was diluted at 1:100



Immunohistochemical analysis of paraffin-embedded Human-lymph, antibody was diluted at 1:100



Immunohistochemical analysis of paraffin-embedded Human-lymph, antibody was diluted at 1:100

#### **Granzyme M Polyclonal Antibody - Background**

Cleaves peptide substrates after methionine, leucine, and norleucine. Physiological substrates include EZR, alpha- tubulins and the apoptosis inhibitor BIRC5/Survivin. Promotes caspase activation and subsequent apoptosis of target cells.