

Integrin β 7 Polyclonal Antibody
Catalog # AP74263**Specification**

Integrin β 7 Polyclonal Antibody - Product Information

Application	WB
Primary Accession	P26010
Reactivity	Human, Mouse
Host	Rabbit
Clonality	Polyclonal

Integrin β 7 Polyclonal Antibody - Additional Information**Gene ID** 3695**Other Names**

Integrin beta-7 (Gut homing receptor beta subunit)

Dilution

WB~~WB 1:500-2000, ELISA 1:10000-20000

Format

Liquid in PBS containing 50% glycerol, 0.5% BSA and 0.09% (W/V) sodium azide.

Storage Conditions

-20°C

Integrin β 7 Polyclonal Antibody - Protein Information**Name** ITGB7**Function**

Integrin ITGA4/ITGB7 (alpha-4/beta-7) (Peyer patches-specific homing receptor LPAM-1) is an adhesion molecule that mediates lymphocyte migration and homing to gut-associated lymphoid tissue (GALT) (Probable). Integrin ITGA4/ITGB7 interacts with the cell surface adhesion molecules MADCAM1 which is normally expressed by the vascular endothelium of the gastrointestinal tract (PubMed:10837471, PubMed:14608374). Also interacts with VCAM1 and fibronectin, an extracellular matrix component (Probable). It recognizes one or more domains within the alternatively spliced CS-1 region of fibronectin (Probable). Interactions involve the tripeptide L-D-T in MADCAM1, and L-D-V in fibronectin (Probable). Integrin ITGAE/ITGB7 (alpha-E/beta-7, HML-1) is a receptor for E-cadherin (PubMed:10837471).

Cellular Location

Cell membrane; Single-pass type I membrane protein

Tissue Location

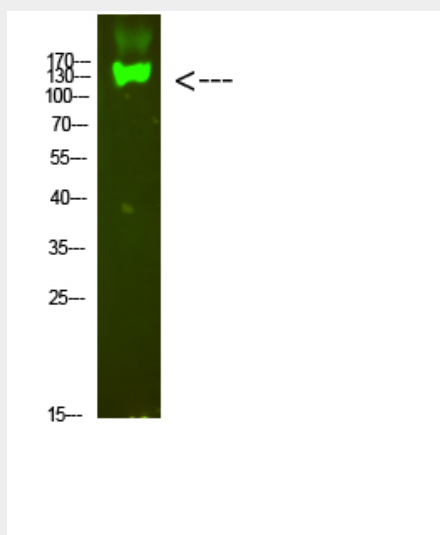
Expressed in a variety of leukocyte lines.

Integrin β 7 Polyclonal Antibody - Protocols

Provided below are standard protocols that you may find useful for product applications.

- [Western Blot](#)
- [Blocking Peptides](#)
- [Dot Blot](#)
- [Immunohistochemistry](#)
- [Immunofluorescence](#)
- [Immunoprecipitation](#)
- [Flow Cytometry](#)
- [Cell Culture](#)

Integrin β 7 Polyclonal Antibody - Images



Integrin β 7 Polyclonal Antibody - Background

Integrin alpha-4/beta-7 (Peyer patches-specific homing receptor LPAM-1) is an adhesion molecule that mediates lymphocyte migration and homing to gut-associated lymphoid tissue (GALT). Integrin alpha-4/beta-7 interacts with the cell surface adhesion molecules MADCAM1 which is normally expressed by the vascular endothelium of the gastrointestinal tract. Interacts also with VCAM1 and fibronectin, an extracellular matrix component. It recognizes one or more domains within the alternatively spliced CS-1 region of fibronectin. Interactions involves the tripeptide L-D-T in MADCAM1, and L-D-V in fibronectin. Binds to HIV-1 gp120, thereby allowing the virus to enter GALT, which is thought to be the major trigger of AIDS disease. Interaction would involve a tripeptide L-D-I in HIV-1 gp120. Integrin alpha-E/beta-7 (HML-1) is a receptor for E-cadherin.