

**COL19A1 Polyclonal Antibody**  
**Catalog # AP74270****Specification**

---

**COL19A1 Polyclonal Antibody - Product Information**

Application	WB
Primary Accession	<a href="#">Q14993</a>
Reactivity	Human
Host	Rabbit
Clonality	Polyclonal

**COL19A1 Polyclonal Antibody - Additional Information****Gene ID** 1310**Other Names**

Collagen alpha-1(XIX) chain (Collagen alpha-1(Y) chain)

**Dilution**

WB~~WB 1:500-2000, ELISA 1:10000-20000

**Format**

Liquid in PBS containing 50% glycerol, 0.5% BSA and 0.09% (W/V) sodium azide.

**Storage Conditions**

-20°C

**COL19A1 Polyclonal Antibody - Protein Information****Name** COL19A1**Function**

May act as a cross-bridge between fibrils and other extracellular matrix molecules. Involved in skeletal myogenesis in the developing esophagus. May play a role in organization of the pericellular matrix or the sphinteric smooth muscle.

**Cellular Location**

Secreted, extracellular space, extracellular matrix

**Tissue Location**

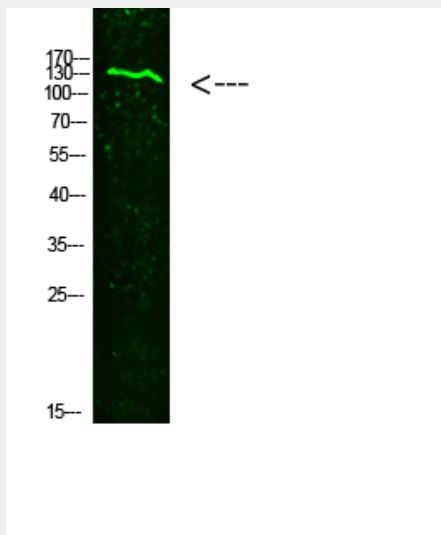
Localized to vascular, neuronal, mesenchymal, and some epithelial basement membrane zones in umbilical cord

**COL19A1 Polyclonal Antibody - Protocols**

Provided below are standard protocols that you may find useful for product applications.

- [Western Blot](#)
- [Blocking Peptides](#)
- [Dot Blot](#)
- [Immunohistochemistry](#)
- [Immunofluorescence](#)
- [Immunoprecipitation](#)
- [Flow Cytometry](#)
- [Cell Culture](#)

#### **COL19A1 Polyclonal Antibody - Images**



#### **COL19A1 Polyclonal Antibody - Background**

May act as a cross-bridge between fibrils and other extracellular matrix molecules. Involved in skeletal myogenesis in the developing esophagus. May play a role in organization of the pericellular matrix or the sphinteric smooth muscle.