

**COL8A2 Polyclonal Antibody**  
**Catalog # AP74271****Specification**

---

**COL8A2 Polyclonal Antibody - Product Information**

Application	WB
Primary Accession	<a href="#">P25067</a>
Reactivity	Human, Mouse, Rat
Host	Rabbit
Clonality	Polyclonal

**COL8A2 Polyclonal Antibody - Additional Information****Gene ID** 1296**Other Names**

Collagen alpha-2(VIII) chain (Endothelial collagen)

**Dilution**

WB~~WB 1:500-2000, ELISA 1:10000-20000

**Format**

Liquid in PBS containing 50% glycerol, 0.5% BSA and 0.09% (W/V) sodium azide.

**Storage Conditions**

-20°C

**COL8A2 Polyclonal Antibody - Protein Information****Name** COL8A2**Function**

Macromolecular component of the subendothelium. Major component of the Descemet's membrane (basement membrane) of corneal endothelial cells. Also a component of the endothelia of blood vessels. Necessary for migration and proliferation of vascular smooth muscle cells and thus, has a potential role in the maintenance of vessel wall integrity and structure, in particular in atherogenesis (By similarity).

**Cellular Location**

Secreted, extracellular space, extracellular matrix, basement membrane

**Tissue Location**

Expressed primarily in the subendothelium of large blood vessels. Also expressed in arterioles and venules in muscle, heart, kidney, spleen, umbilical cord, liver and lung and is also found in connective tissue layers around hair follicles, around nerve bundles in muscle, in the dura of the optic nerve, in cornea and sclera, and in the perichondrium of cartilaginous tissues. In the kidney, expressed in mesangial cells, glomerular endothelial cells, and tubular epithelial cells. Also expressed in mast cells, and in astrocytes during the repair process. Expressed in Descemet's

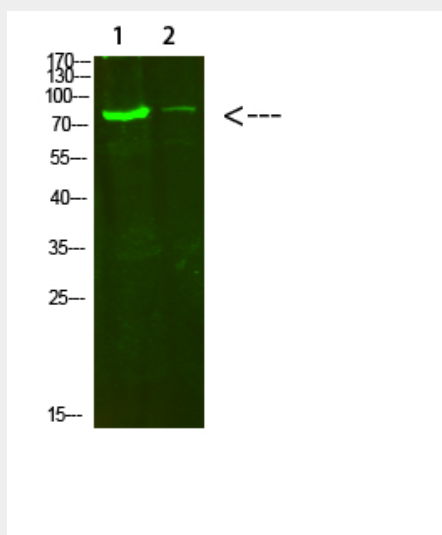
membrane

### **COL8A2 Polyclonal Antibody - Protocols**

Provided below are standard protocols that you may find useful for product applications.

- [Western Blot](#)
- [Blocking Peptides](#)
- [Dot Blot](#)
- [Immunohistochemistry](#)
- [Immunofluorescence](#)
- [Immunoprecipitation](#)
- [Flow Cytometry](#)
- [Cell Culture](#)

### **COL8A2 Polyclonal Antibody - Images**



### **COL8A2 Polyclonal Antibody - Background**

Macromolecular component of the subendothelium. Major component of the Descemet's membrane (basement membrane) of corneal endothelial cells. Also component of the endothelia of blood vessels. Necessary for migration and proliferation of vascular smooth muscle cells and thus, has a potential role in the maintenance of vessel wall integrity and structure, in particular in atherogenesis (By similarity).