

**BPIL1 Antibody (N-term)**  
**Purified Rabbit Polyclonal Antibody (Pab)**  
**Catalog # AP7427a****Specification**

---

**BPIL1 Antibody (N-term) - Product Information**

Application	WB,E
Primary Accession	<a href="#">Q8N4F0</a>
Reactivity	Human
Host	Rabbit
Clonality	Polyclonal
Isotype	Rabbit IgG
Calculated MW	49172
Antigen Region	85-115

**BPIL1 Antibody (N-term) - Additional Information****Gene ID** 80341**Other Names**

BPI fold-containing family B member 2, Bactericidal/permeability-increasing protein-like 1, BPI-like 1, Long palate, lung and nasal epithelium carcinoma-associated protein 2, RYSR, BPIFB2, BPIL1, C20orf184, LPLUNC2

**Target/Specificity**

This BPIL1 antibody is generated from rabbits immunized with a KLH conjugated synthetic peptide between 85-115 amino acids from the N-terminal region of human BPIL1.

**Dilution**

WB~~1:1000

**Format**

Purified polyclonal antibody supplied in PBS with 0.09% (W/V) sodium azide. This antibody is prepared by Saturated Ammonium Sulfate (SAS) precipitation followed by dialysis against PBS.

**Storage**

Maintain refrigerated at 2-8°C for up to 2 weeks. For long term storage store at -20°C in small aliquots to prevent freeze-thaw cycles.

**Precautions**

BPIL1 Antibody (N-term) is for research use only and not for use in diagnostic or therapeutic procedures.

**BPIL1 Antibody (N-term) - Protein Information****Name** BPIFB2**Synonyms** BPIL1, C20orf184, LPLUNC2

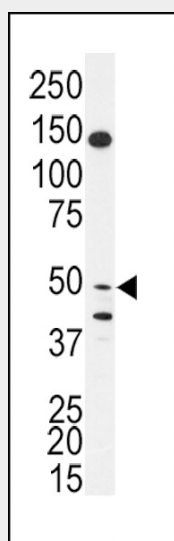
**Cellular Location**  
Secreted.**Tissue Location**

Highly expressed in tonsils, especially in hypertrophic tonsils. Detected at very low levels in fetal liver

**BPIL1 Antibody (N-term) - Protocols**

Provided below are standard protocols that you may find useful for product applications.

- [Western Blot](#)
- [Blocking Peptides](#)
- [Dot Blot](#)
- [Immunohistochemistry](#)
- [Immunofluorescence](#)
- [Immunoprecipitation](#)
- [Flow Cytometry](#)
- [Cell Culture](#)

**BPIL1 Antibody (N-term) - Images**

Western blot analysis of anti-BPIL1 Antibody (N-term)(Cat.#AP7427a) in SK-BR-3 cell line lysates (35ug/lane). BPIL1 (arrow) was detected using the purified Pab.

**BPIL1 Antibody (N-term) - Background**

BPIL1 is a member of the lipid transfer/lipopolysaccharide binding protein (LT/LBP) family. This protein is highly expressed in hypertrophic tonsils.

**BPIL1 Antibody (N-term) - References**

Clark H.F., Gurney A.L., Abaya E.Genome Res. 13:2265-2270(2003)  
Deloukas P., Matthews L.H.Nature 414:865-871(2001)  
Mulero J.J., Boyle B.J., Bradley S.Immunogenetics 54:293-300(2002)