

COL13A1 Polyclonal Antibody
Catalog # AP74285**Specification**

COL13A1 Polyclonal Antibody - Product Information

Application	WB
Primary Accession	Q5TAT6
Reactivity	Human, Mouse
Host	Rabbit
Clonality	Polyclonal

COL13A1 Polyclonal Antibody - Additional Information**Gene ID** 1305**Other Names**

Collagen alpha-1(XIII) chain (COLXIII A1)

Dilution

WB~~WB 1:500-2000, ELISA 1:10000-20000

Format

Liquid in PBS containing 50% glycerol, 0.5% BSA and 0.09% (W/V) sodium azide.

Storage Conditions

-20°C

COL13A1 Polyclonal Antibody - Protein Information**Name** COL13A1 ([HGNC:2190](#))**Function**

Involved in cell-matrix and cell-cell adhesion interactions that are required for normal development. May participate in the linkage between muscle fiber and basement membrane. May play a role in endochondral ossification of bone and branching morphogenesis of lung. Binds heparin. At neuromuscular junctions, may play a role in acetylcholine receptor clustering (PubMed:26626625).

Cellular Location

Cell membrane; Single-pass type II membrane protein Postsynaptic cell membrane

Tissue Location

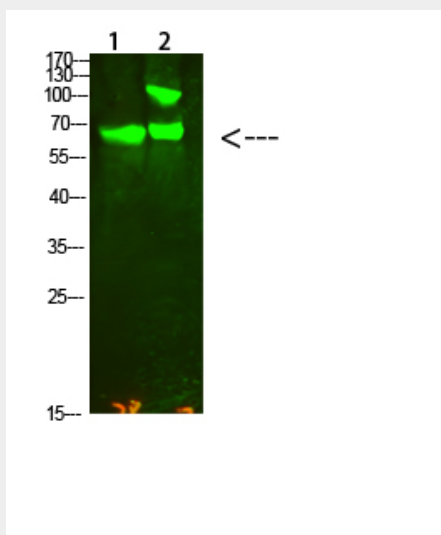
Widely expressed in both fetal and adult ocular tissues (at protein level). In the eye, expression is accentuated in the ciliary muscle, optic nerve and the neural retina. In early placenta, localized to fibroblastoid stromal cells of the placental villi, to endothelial cells of developing capillaries and to cells of the cytotrophoblastic columns. Also detected in large decidual cells of the decidual membrane and to stromal cells of the gestational endometrium, but not in the epithelial cells in the endometrial glands Isoform 10: Expressed in muscle (PubMed:26626625)

COL13A1 Polyclonal Antibody - Protocols

Provided below are standard protocols that you may find useful for product applications.

- [Western Blot](#)
- [Blocking Peptides](#)
- [Dot Blot](#)
- [Immunohistochemistry](#)
- [Immunofluorescence](#)
- [Immunoprecipitation](#)
- [Flow Cytometry](#)
- [Cell Culture](#)

COL13A1 Polyclonal Antibody - Images



COL13A1 Polyclonal Antibody - Background

Involved in cell-matrix and cell-cell adhesion interactions that are required for normal development. May participate in the linkage between muscle fiber and basement membrane. May play a role in endochondral ossification of bone and branching morphogenesis of lung. Binds heparin. At neuromuscular junctions, may play a role in acetylcholine receptor clustering (PubMed:26626625).