

CDH3 Polyclonal Antibody
Catalog # AP74326**Specification**

CDH3 Polyclonal Antibody - Product Information

Application	WB
Primary Accession	P22223
Reactivity	Human, Mouse, Rat
Host	Rabbit
Clonality	Polyclonal

CDH3 Polyclonal Antibody - Additional Information**Gene ID** 1001**Other Names**

Cadherin-3 (Placental cadherin) (P-cadherin)

Dilution

WB~~WB 1:500-2000, ELISA 1:10000-20000

Format

Liquid in PBS containing 50% glycerol, 0.5% BSA and 0.09% (W/V) sodium azide.

Storage Conditions

-20°C

CDH3 Polyclonal Antibody - Protein Information**Name** CDH3**Synonyms** CDHP**Function**

Cadherins are calcium-dependent cell adhesion proteins. They preferentially interact with themselves in a homophilic manner in connecting cells; cadherins may thus contribute to the sorting of heterogeneous cell types.

Cellular Location

Cell membrane; Single-pass type I membrane protein

Tissue Location

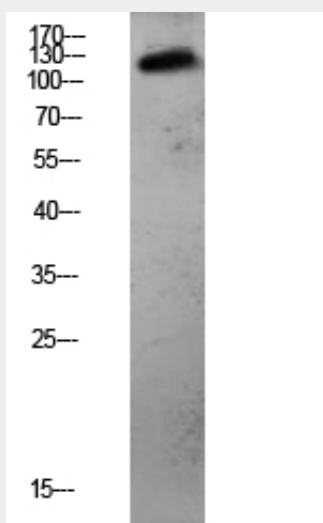
Expressed in some normal epithelial tissues and in some carcinoma cell lines.

CDH3 Polyclonal Antibody - Protocols

Provided below are standard protocols that you may find useful for product applications.

- [Western Blot](#)
- [Blocking Peptides](#)
- [Dot Blot](#)
- [Immunohistochemistry](#)
- [Immunofluorescence](#)
- [Immunoprecipitation](#)
- [Flow Cytometry](#)
- [Cell Culture](#)

CDH3 Polyclonal Antibody - Images



Western blot analysis of mouse-liver lysate, antibody was diluted at 1000. Secondary antibody was diluted at 1:20000

CDH3 Polyclonal Antibody - Background

Cadherins are calcium-dependent cell adhesion proteins. They preferentially interact with themselves in a homophilic manner in connecting cells; cadherins may thus contribute to the sorting of heterogeneous cell types.