

PAR1 (Cleaved-Ser42) Polyclonal Antibody
Catalog # AP74344**Specification****PAR1 (Cleaved-Ser42) Polyclonal Antibody - Product Information**

Application	WB
Primary Accession	P25116
Reactivity	Human, Mouse, Rat
Host	Rabbit
Clonality	Polyclonal

PAR1 (Cleaved-Ser42) Polyclonal Antibody - Additional Information**Gene ID** 2149**Other Names**

Proteinase-activated receptor 1 (PAR-1) (Coagulation factor II receptor) (Thrombin receptor)

Dilution

WB~~WB 1:500-2000, ELISA 1:10000-20000

Format

Liquid in PBS containing 50% glycerol, 0.5% BSA and 0.09% (W/V) sodium azide.

Storage Conditions

-20°C

PAR1 (Cleaved-Ser42) Polyclonal Antibody - Protein Information**Name** F2R ([HGNC:3537](#))**Synonyms** CF2R, PAR1, TR**Function**

High affinity receptor that binds the activated thrombin, leading to calcium release from intracellular stores (PubMed:1672265, PubMed:8136362). The thrombin-activated receptor signaling pathway is mediated through PTX-insensitive G proteins, activation of phospholipase C resulting in the production of 1D-myo-inositol 1,4,5- trisphosphate (InsP3) which binds to InsP3 receptors causing calcium release from the stores (By similarity). In astrocytes, the calcium released into the cytosol allows the Ca(2+)-dependent release of L- glutamate into the synaptic cleft through BEST1, that targets the neuronal postsynaptic GRIN2A/NMDAR receptor resulting in the synaptic plasticity regulation (By similarity). May play a role in platelets activation and in vascular development (PubMed:10079109). Mediates up-regulation of pro-inflammatory cytokines, such as MCP-1/CCL2 and IL6, triggered by coagulation factor Xa (F10) in cardiac fibroblasts and umbilical vein endothelial cells (PubMed:30568593, PubMed:30568593).

href="http://www.uniprot.org/citations/34831181" target="_blank">34831181).

Cellular Location

Cell membrane {ECO:0000250|UniProtKB:P26824}; Multi-pass membrane protein {ECO:0000250|UniProtKB:P26824}

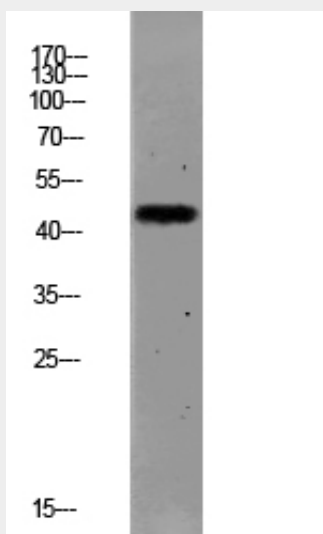
Tissue Location

Platelets and vascular endothelial cells.

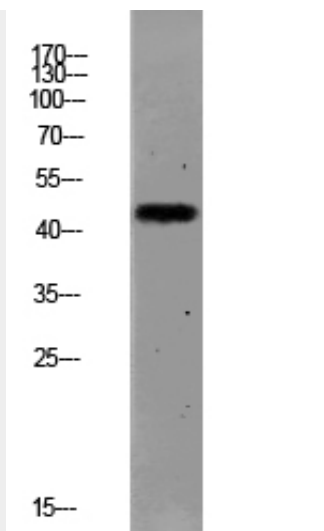
PAR1 (Cleaved-Ser42) Polyclonal Antibody - Protocols

Provided below are standard protocols that you may find useful for product applications.

- [Western Blot](#)
- [Blocking Peptides](#)
- [Dot Blot](#)
- [Immunohistochemistry](#)
- [Immunofluorescence](#)
- [Immunoprecipitation](#)
- [Flow Cytometry](#)
- [Cell Culture](#)

PAR1 (Cleaved-Ser42) Polyclonal Antibody - Images

Western blot analysis of MCF-7 lysate, antibody was diluted at 1000. Secondary antibody was diluted at 1:20000



Western blot analysis of MCF-7 lysate, antibody was diluted at 1000. Secondary antibody was diluted at 1:20000

PAR1 (Cleaved-Ser42) Polyclonal Antibody - Background

High affinity receptor for activated thrombin coupled to G proteins that stimulate phosphoinositide hydrolysis. May play a role in platelets activation and in vascular development.

PAR1 (Cleaved-Ser42) Polyclonal Antibody - Citations

- [PAR1 regulation of CXCL1 expression and neutrophil recruitment to the lung in mice infected with influenza A virus](#)