

Na⁺/K⁺-ATPase α 1 Polyclonal Antibody
Catalog # AP74345**Specification**

Na⁺/K⁺-ATPase α 1 Polyclonal Antibody - Product Information

Application	WB
Primary Accession	P05023
Reactivity	Human, Mouse, Rat
Host	Rabbit
Clonality	Polyclonal

Na⁺/K⁺-ATPase α 1 Polyclonal Antibody - Additional Information**Gene ID** 476**Other Names**

Sodium/potassium-transporting ATPase subunit alpha-1 (Na(+)/K(+)) ATPase alpha-1 subunit (EC 3.6.3.9) (Sodium pump subunit alpha-1)

Dilution

WB~~WB 1:500-2000, ELISA 1:10000-20000

Format

Liquid in PBS containing 50% glycerol, 0.5% BSA and 0.09% (W/V) sodium azide.

Storage Conditions

-20°C

Na⁺/K⁺-ATPase α 1 Polyclonal Antibody - Protein Information**Name** ATP1A1**Function**

This is the catalytic component of the active enzyme, which catalyzes the hydrolysis of ATP coupled with the exchange of sodium and potassium ions across the plasma membrane. This action creates the electrochemical gradient of sodium and potassium ions, providing the energy for active transport of various nutrients (PubMed:29499166, PubMed:30388404). Could also be part of an osmosensory signaling pathway that senses body-fluid sodium levels and controls salt intake behavior as well as voluntary water intake to regulate sodium homeostasis (By similarity).

Cellular Location

Cell membrane {ECO:0000250|UniProtKB:Q8VDN2}; Multi-pass membrane protein. Basolateral cell membrane {ECO:0000250|UniProtKB:P06685}; Multi-pass membrane protein. Cell membrane, sarcolemma; Multi-pass membrane protein. Cell projection, axon {ECO:0000250|UniProtKB:P06685}. Melanosome. Note=Identified by mass spectrometry in

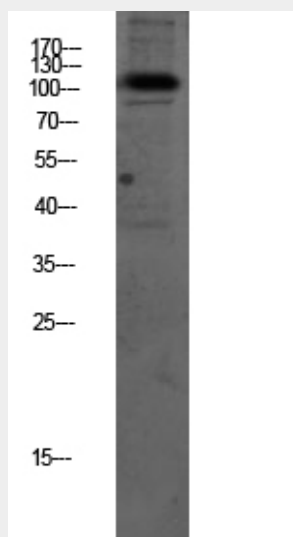
melanosome fractions from stage I to stage IV

Na⁺/K⁺-ATPase α 1 Polyclonal Antibody - Protocols

Provided below are standard protocols that you may find useful for product applications.

- [Western Blot](#)
- [Blocking Peptides](#)
- [Dot Blot](#)
- [Immunohistochemistry](#)
- [Immunofluorescence](#)
- [Immunoprecipitation](#)
- [Flow Cytometry](#)
- [Cell Culture](#)

Na⁺/K⁺-ATPase α 1 Polyclonal Antibody - Images



Western blot analysis of mouse-brain lysate, antibody was diluted at 1000. Secondary antibody was diluted at 1:20000

Na⁺/K⁺-ATPase α 1 Polyclonal Antibody - Background

This is the catalytic component of the active enzyme, which catalyzes the hydrolysis of ATP coupled with the exchange of sodium and potassium ions across the plasma membrane. This action creates the electrochemical gradient of sodium and potassium ions, providing the energy for active transport of various nutrients.