

HIBCH Antibody (Center)
Purified Rabbit Polyclonal Antibody (Pab)
Catalog # AP7435c**Specification**

HIBCH Antibody (Center) - Product Information

Application	IHC-P, WB,E
Primary Accession	Q6NVY1
Reactivity	Human
Host	Rabbit
Clonality	Polyclonal
Isotype	Rabbit IgG
Calculated MW	43482
Antigen Region	183-209

HIBCH Antibody (Center) - Additional Information**Gene ID** 26275**Other Names**

3-hydroxyisobutyryl-CoA hydrolase, mitochondrial, 3-hydroxyisobutyryl-coenzyme A hydrolase, HIB-CoA hydrolase, HIBYL-CoA-H, HIBCH

Target/Specificity

This HIBCH antibody is generated from rabbits immunized with a KLH conjugated synthetic peptide between 183-209 amino acids from the Central region of human HIBCH.

Dilution

IHC-P~~1:10~50

WB~~1:1000

E~~Use at an assay dependent concentration.

Format

Purified polyclonal antibody supplied in PBS with 0.09% (W/V) sodium azide. This antibody is prepared by Saturated Ammonium Sulfate (SAS) precipitation followed by dialysis against PBS.

Storage

Maintain refrigerated at 2-8°C for up to 2 weeks. For long term storage store at -20°C in small aliquots to prevent freeze-thaw cycles.

Precautions

HIBCH Antibody (Center) is for research use only and not for use in diagnostic or therapeutic procedures.

HIBCH Antibody (Center) - Protein Information**Name** HIBCH

Function Hydrolyzes 3-hydroxyisobutyryl-CoA (HIBYL-CoA), a saline catabolite. Has high activity toward isobutyryl-CoA. Could be an isobutyryl-CoA dehydrogenase that functions in valine catabolism. Also hydrolyzes 3-hydroxypropanoyl-CoA.

Cellular Location
Mitochondrion.

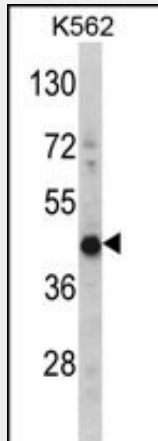
Tissue Location
Highly expressed in liver and kidney, also detected in heart, muscle and brain (at protein level).
Not detected in lung

HIBCH Antibody (Center) - Protocols

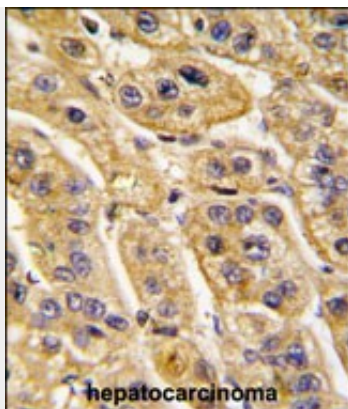
Provided below are standard protocols that you may find useful for product applications.

- [Western Blot](#)
- [Blocking Peptides](#)
- [Dot Blot](#)
- [Immunohistochemistry](#)
- [Immunofluorescence](#)
- [Immunoprecipitation](#)
- [Flow Cytometry](#)
- [Cell Culture](#)

HIBCH Antibody (Center) - Images



Western blot analysis of HIBCH Antibody (Center) (Cat. #AP7435c) in K562 cell line lysates (35ug/lane). HIBCH (arrow) was detected using the purified Pab.(2ug/ml)



Formalin-fixed and paraffin-embedded human hepatocarcinoma tissue reacted with HIBCH antibody (Center), which was peroxidase-conjugated to the secondary antibody, followed by DAB staining. This data demonstrates the use of this antibody for immunohistochemistry; clinical relevance has not been evaluated.

HIBCH Antibody (Center) - Background

HIBCH is responsible for the specific hydrolysis of HIBYL-CoA, a valine catabolite, as well as the hydrolysis of beta-hydroxypropionyl-CoA, an intermediate in a minor pathway of propionate metabolism.

HIBCH Antibody (Center) - References

Hawes J.W., Jaskiewicz J., Shimomura Y.J. Biol. Chem. 271:26430-26434(1996)
Loupatty F.J., Clayton P.T. Am. J. Hum. Genet. 80:195-199(2007)