

ADAMTS13 Antibody (Center)
Affinity Purified Rabbit Polyclonal Antibody (Pab)
Catalog # AP7438c**Specification**

ADAMTS13 Antibody (Center) - Product Information

Application	WB,E
Primary Accession	Q76LX8
Reactivity	Human
Host	Rabbit
Clonality	Polyclonal
Isotype	Rabbit IgG
Antigen Region	829-858

ADAMTS13 Antibody (Center) - Additional Information**Gene ID** 11093**Other Names**

A disintegrin and metalloproteinase with thrombospondin motifs 13, ADAM-TS 13, ADAM-TS13, ADAMTS-13, von Willebrand factor-cleaving protease, vWF-CP, vWF-cleaving protease, ADAMTS13, C9orf8

Target/Specificity

This ADAMTS13 antibody is generated from rabbits immunized with a KLH conjugated synthetic peptide between 829-858 amino acids from the Central region of human ADAMTS13.

Dilution

WB~~1:500

Format

Purified polyclonal antibody supplied in PBS with 0.09% (W/V) sodium azide. This antibody is purified through a protein A column, followed by peptide affinity purification.

Storage

Maintain refrigerated at 2-8°C for up to 2 weeks. For long term storage store at -20°C in small aliquots to prevent freeze-thaw cycles.

Precautions

ADAMTS13 Antibody (Center) is for research use only and not for use in diagnostic or therapeutic procedures.

ADAMTS13 Antibody (Center) - Protein Information**Name** ADAMTS13**Synonyms** C9orf8

Function Cleaves the vWF multimers in plasma into smaller forms thereby controlling vWF-mediated platelet thrombus formation.

Cellular Location

Secreted. Note=Secretion enhanced by O-fucosylation of TSP type-1 repeats

Tissue Location

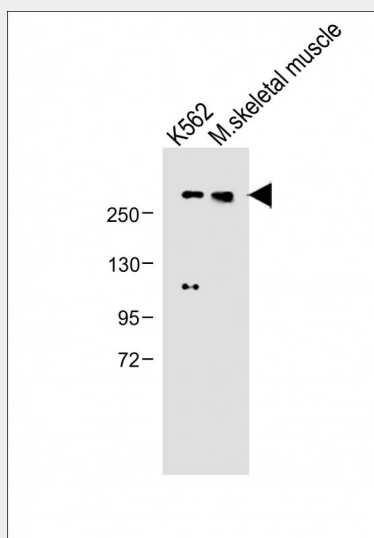
Plasma. Expressed primarily in liver.

ADAMTS13 Antibody (Center) - Protocols

Provided below are standard protocols that you may find useful for product applications.

- [Western Blot](#)
- [Blocking Peptides](#)
- [Dot Blot](#)
- [Immunohistochemistry](#)
- [Immunofluorescence](#)
- [Immunoprecipitation](#)
- [Flow Cytometry](#)
- [Cell Culture](#)

ADAMTS13 Antibody (Center) - Images



All lanes : Anti-ADAMTS13 Antibody (Center) at 1:500 dilution Lane 1: K562 whole cell lysate Lane 2: M. skeletal muscle whole cell lysate Lysates/proteins at 20 µg per lane. Secondary Goat Anti-Rabbit IgG, (H+L), Peroxidase conjugated at 1/10000 dilution. Observed band size : 250kDa Blocking/Dilution buffer: 5% NFDM/TBST.

ADAMTS13 Antibody (Center) - Background

ADAMTS13 is a member of the ADAMTS (a disintegrin and metalloproteinase with thrombospondin motif) protein family. Members of the family share several distinct protein modules, including a propeptide region, a metalloproteinase domain, a disintegrin-like domain, and a thrombospondin type 1 (TS) motif. Individual members of this family differ in the number of C-terminal TS motifs, and some have unique C-terminal domains. The enzyme is the von Willebrand Factor (vWF)-cleaving protease, which is responsible for cleaving at the site of Tyr842-Met843 of the vWF

molecule. A deficiency of this enzyme is associated with thrombotic thrombocytopenic purpura.

ADAMTS13 Antibody (Center) - References

Zheng X., Chung D., Takayama T.K.J. Biol. Chem. 276:41059-41063(2001)
Levy G.G., Nichols W.C.Nature 413:488-494(2001)
Cal S., Obaya A.J., Llamazares M., Garabaya C.Gene 283:49-62(2002)
Zheng X., Nishio K., Majerus E.M.J. Biol. Chem. 278:30136-30141(2003)
Anderson P.J., Kokame K., Sadler J.E.J. Biol. Chem. 281:850-857(2006)
Pimanda J.E., Maekawa A., Wind T.Blood 103:627-629(2004)
Plaimauer B., Fuhrmann J., Mohr G.Blood 107:118-125(2006)