

HIS Tag Antibody
Catalog # AP74479**Specification**

HIS Tag Antibody - Product Information

Application	WB, IF, IP
Host	Mouse
Clonality	Monoclonal

HIS Tag Antibody - Additional Information**Dilution**

WB~~1:3000
IF~~1:50~200
IP~~N/A

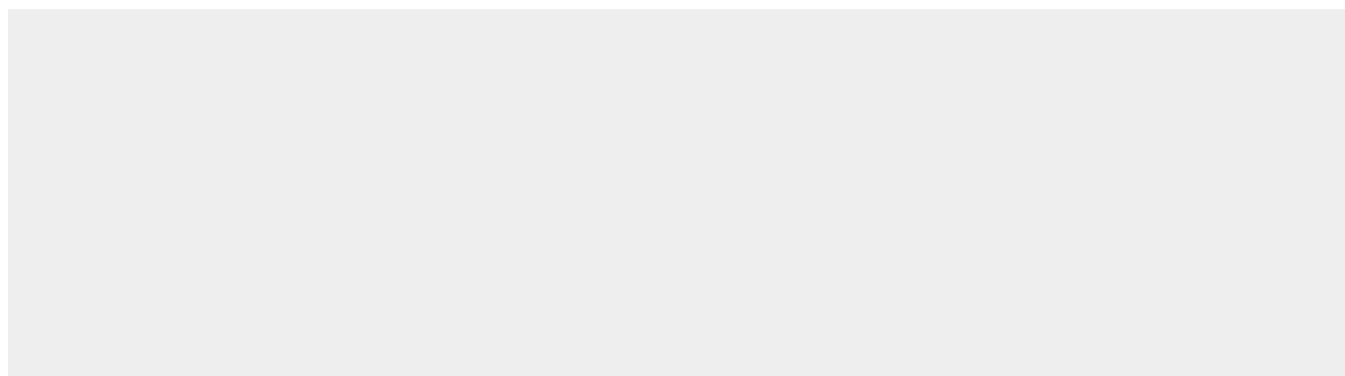
Storage Conditions

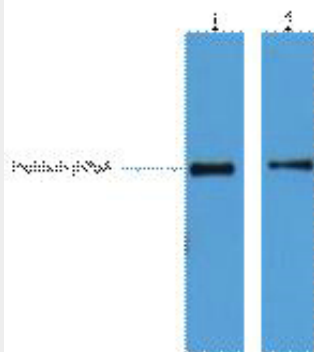
-20°C

HIS Tag Antibody - Protein Information**HIS Tag Antibody - Protocols**

Provided below are standard protocols that you may find useful for product applications.

- [Western Blot](#)
- [Blocking Peptides](#)
- [Dot Blot](#)
- [Immunohistochemistry](#)
- [Immunofluorescence](#)
- [Immunoprecipitation](#)
- [Flow Cytometry](#)
- [Cell Culture](#)

HIS Tag Antibody - Images



2ug His fusion protein+ Primary antibody dilution at 1) 1:5000;2) 1:10000