

**CCL17 Polyclonal Antibody**  
**Catalog # AP74470****Specification**

---

**CCL17 Polyclonal Antibody - Product Information**

Application	WB
Primary Accession	<a href="#">Q92583</a>
Reactivity	Human
Host	Rabbit
Clonality	Polyclonal

**CCL17 Polyclonal Antibody - Additional Information****Gene ID** 6361**Other Names**

C-C motif chemokine 17 (CC chemokine TARC) (Small-inducible cytokine A17) (Thymus and activation-regulated chemokine)

**Dilution**

WB~~WB 1:500-2000, ELISA(peptide)1:5000-20000

**Format**

Liquid in PBS containing 50% glycerol, 0.5% BSA and 0.09% (W/V) sodium azide.

**Storage Conditions**

-20°C

**CCL17 Polyclonal Antibody - Protein Information****Name** CCL17**Synonyms** SCYA17, TARC**Function**

Chemokine, which displays chemotactic activity for T lymphocytes, preferentially Th2 cells, but not monocytes or granulocytes. Therefore plays an important role in a wide range of inflammatory and immunological processes (PubMed:<a href="http://www.uniprot.org/citations/8702936" target="\_blank">8702936</a>, PubMed:<a href="http://www.uniprot.org/citations/9169480" target="\_blank">9169480</a>). Acts by binding to CCR4 at T-cell surface (PubMed:<a href="http://www.uniprot.org/citations/10540332" target="\_blank">10540332</a>, PubMed:<a href="http://www.uniprot.org/citations/9169480" target="\_blank">9169480</a>). Mediates GM-CSF/CSF2-driven pain and inflammation (PubMed:<a href="http://www.uniprot.org/citations/27525438" target="\_blank">27525438</a>). In the brain, required to maintain the typical, highly branched morphology of hippocampal microglia under homeostatic conditions. May be important for the appropriate adaptation of microglial morphology and synaptic plasticity to acute lipopolysaccharide (LPS)-induced neuroinflammation (By similarity). Plays a role in wound healing, mainly by inducing fibroblast migration into the wound

(By similarity).

#### **Cellular Location**

Secreted

#### **Tissue Location**

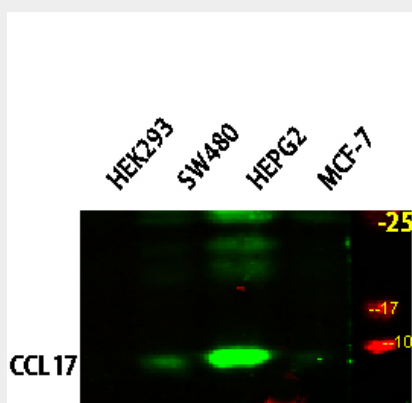
Constitutively expressed in thymus. Detected at lower levels in the lung, colon and small intestine (PubMed:8702936) Expressed in stimulated peripheral blood mononuclear cells, but not in resting cells (PubMed:8702936).

### **CCL17 Polyclonal Antibody - Protocols**

Provided below are standard protocols that you may find useful for product applications.

- [Western Blot](#)
- [Blocking Peptides](#)
- [Dot Blot](#)
- [Immunohistochemistry](#)
- [Immunofluorescence](#)
- [Immunoprecipitation](#)
- [Flow Cytometry](#)
- [Cell Culture](#)

### **CCL17 Polyclonal Antibody - Images**



### **CCL17 Polyclonal Antibody - Background**

Chemotactic factor for T-lymphocytes but not monocytes or granulocytes. May play a role in T-cell development in thymus and in trafficking and activation of mature T-cells. Binds to CCR4.