

**CYP20A1 Antibody (C-term)**  
**Purified Rabbit Polyclonal Antibody (Pab)**  
**Catalog # AP7453b****Specification**

---

**CYP20A1 Antibody (C-term) - Product Information**

Application	WB, IHC-P, FC,E
Primary Accession	<a href="#">Q6UW02</a>
Reactivity	Human
Host	Rabbit
Clonality	Polyclonal
Isotype	Rabbit IgG
Calculated MW	52432
Antigen Region	364-392

**CYP20A1 Antibody (C-term) - Additional Information****Gene ID** 57404**Other Names**

Cytochrome P450 20A1, 114--, CYP20A1

**Target/Specificity**

This CYP20A1 antibody is generated from rabbits immunized with a KLH conjugated synthetic peptide between 364-392 amino acids from the C-terminal region of human CYP20A1.

**Dilution**

WB~~1:1000  
IHC-P~~1:50~100  
FC~~1:10~50

**Format**

Purified polyclonal antibody supplied in PBS with 0.09% (W/V) sodium azide. This antibody is prepared by Saturated Ammonium Sulfate (SAS) precipitation followed by dialysis against PBS.

**Storage**

Maintain refrigerated at 2-8°C for up to 2 weeks. For long term storage store at -20°C in small aliquots to prevent freeze-thaw cycles.

**Precautions**

CYP20A1 Antibody (C-term) is for research use only and not for use in diagnostic or therapeutic procedures.

**CYP20A1 Antibody (C-term) - Protein Information****Name** CYP20A1**Cellular Location**

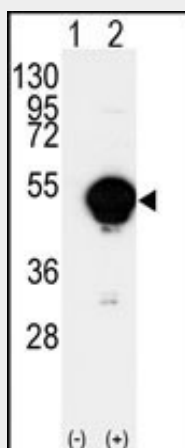
Membrane; Single-pass membrane protein

### **CYP20A1 Antibody (C-term) - Protocols**

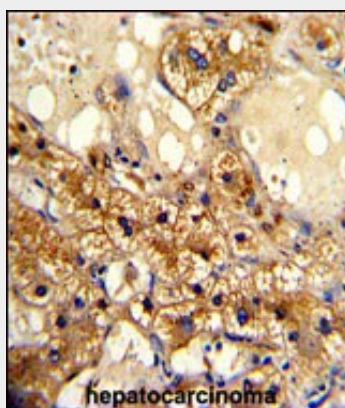
Provided below are standard protocols that you may find useful for product applications.

- [Western Blot](#)
- [Blocking Peptides](#)
- [Dot Blot](#)
- [Immunohistochemistry](#)
- [Immunofluorescence](#)
- [Immunoprecipitation](#)
- [Flow Cytometry](#)
- [Cell Culture](#)

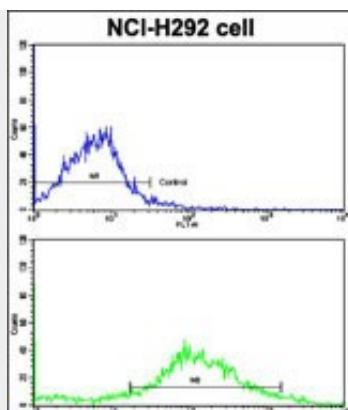
### **CYP20A1 Antibody (C-term) - Images**



Western blot analysis of CYP20A1 (arrow) using rabbit polyclonal CYP20A1 Antibody (C-term) (Cat.#AP7453b). 293 cell lysates (2 ug/lane) either nontransfected (Lane 1) or transiently transfected with the CYP20A1 gene (Lane 2) (Origene Technologies).



Formalin-fixed and paraffin-embedded human hepatocarcinoma with CYP20A1 Antibody (C-term), which was peroxidase-conjugated to the secondary antibody, followed by DAB staining. This data demonstrates the use of this antibody for immunohistochemistry; clinical relevance has not been evaluated.



Flow cytometric analysis of NCI-H292 cells using CYP20A1 Antibody (C-term)(bottom histogram) compared to a negative control cell (top histogram). FITC-conjugated goat-anti-rabbit secondary antibodies were used for the analysis.

### **CYP20A1 Antibody (C-term) - Background**

CYP20A1 is a member of the cytochrome P450 superfamily of enzymes. The cytochrome P450 proteins are monooxygenases that catalyze many reactions involved in drug metabolism and synthesis of cholesterol, steroids and other lipids. The protein lacks one amino acid of the conserved heme binding site. It also lacks the conserved I-helix motif AGX(D,E)T, suggesting that its substrate may carry its own oxygen.

### **CYP20A1 Antibody (C-term) - References**

Clark H.F., Gurney A.L., Abaya E. Genome Res. 13:2265-2270(2003)