

SERPINA4 Antibody (C-term)
Purified Rabbit Polyclonal Antibody (Pab)
Catalog # AP7455b**Specification**

SERPINA4 Antibody (C-term) - Product Information

Application	FC, IHC-P, WB,E
Primary Accession	P29622
Reactivity	Human
Host	Rabbit
Clonality	Polyclonal
Isotype	Rabbit IgG
Calculated MW	48542
Antigen Region	291-320

SERPINA4 Antibody (C-term) - Additional Information**Gene ID** 5267**Other Names**

Kallistatin, Kallikrein inhibitor, Peptidase inhibitor 4, PI-4, Serpin A4, SERPINA4, KST, PI4

Target/Specificity

This SERPINA4 antibody is generated from rabbits immunized with a KLH conjugated synthetic peptide between 291-320 amino acids from the C-terminal region of human SERPINA4.

Dilution

FC~~1:10~50

IHC-P~~1:50~100

WB~~1:1000

E~~Use at an assay dependent concentration.

Format

Purified polyclonal antibody supplied in PBS with 0.09% (W/V) sodium azide. This antibody is prepared by Saturated Ammonium Sulfate (SAS) precipitation followed by dialysis against PBS.

Storage

Maintain refrigerated at 2-8°C for up to 2 weeks. For long term storage store at -20°C in small aliquots to prevent freeze-thaw cycles.

Precautions

SERPINA4 Antibody (C-term) is for research use only and not for use in diagnostic or therapeutic procedures.

SERPINA4 Antibody (C-term) - Protein Information**Name** SERPINA4

Synonyms KST, PI4

Function Inhibits human amidolytic and kininogenase activities of tissue kallikrein. Inhibition is achieved by formation of an equimolar, heat- and SDS-stable complex between the inhibitor and the enzyme, and generation of a small C-terminal fragment of the inhibitor due to cleavage at the reactive site by tissue kallikrein.

Cellular Location

Secreted.

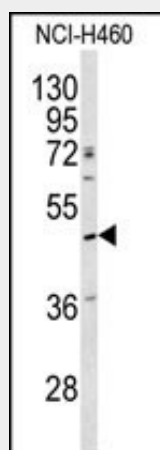
Tissue Location

Expressed by the liver and secreted in plasma.

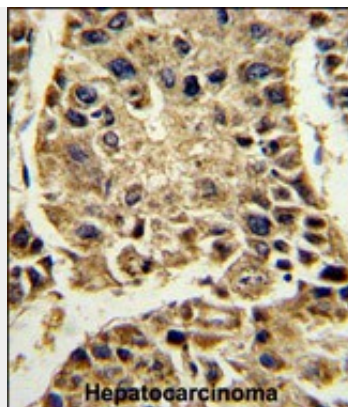
SERPINA4 Antibody (C-term) - Protocols

Provided below are standard protocols that you may find useful for product applications.

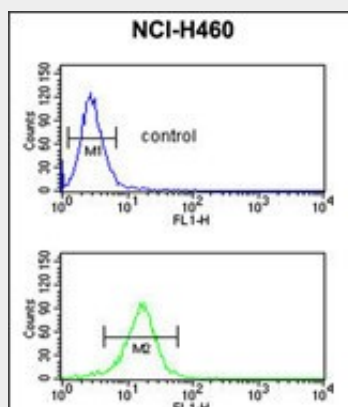
- [Western Blot](#)
- [Blocking Peptides](#)
- [Dot Blot](#)
- [Immunohistochemistry](#)
- [Immunofluorescence](#)
- [Immunoprecipitation](#)
- [Flow Cytometry](#)
- [Cell Culture](#)

SERPINA4 Antibody (C-term) - Images

Western blot analysis of SERPINA4 antibody (C-term) (Cat.#AP7455b) in NCI-H460 cell line lysates (35ug/lane). SERPINA4 (arrow) was detected using the purified Pab.



Formalin-fixed and paraffin-embedded human hepatocarcinoma reacted with SERPINA4 Antibody (C-term), which was peroxidase-conjugated to the secondary antibody, followed by DAB staining. This data demonstrates the use of this antibody for immunohistochemistry; clinical relevance has not been evaluated.



SERPINA4 Antibody (C-term) (Cat. #AP7455b) flow cytometric analysis of NCI-H460 cells (bottom histogram) compared to a negative control cell (top histogram). FITC-conjugated goat-anti-rabbit secondary antibodies were used for the analysis.

SERPINA4 Antibody (C-term) - Background

SERPINA4 inhibits human amidolytic and kininogenase activities of tissue kallikrein. The inhibition is achieved by formation of an equimolar, heat- and SDS-stable complex between the inhibitor and the enzyme, and generation of a small C-terminal fragment of the inhibitor due to cleavage at the reactive site by tissue kallikrein.

SERPINA4 Antibody (C-term) - References

Chai K.X., Chen L.-M.J. Biol. Chem. 268:24498-24505(1993)
Chai K.X., Ward D.C. Genomics 23:370-378(1994)
Zhou G.X., Chao L.J. Biol. Chem. 267:25873-25880(1992)