

EN2 Antibody (C-term-2)
Affinity Purified Rabbit Polyclonal Antibody (Pab)
Catalog # AP7457D**Specification**

EN2 Antibody (C-term-2) - Product Information

Application	WB, FC, IHC-P,E
Primary Accession	P19622
Reactivity	Human
Host	Rabbit
Clonality	Polyclonal
Isotype	Rabbit IgG
Calculated MW	34211
Antigen Region	243-271

EN2 Antibody (C-term-2) - Additional Information**Gene ID** 2020**Other Names**

Homeobox protein engrailed-2, Homeobox protein en-2, Hu-En-2, EN2

Target/Specificity

This EN2 antibody is generated from rabbits immunized with a KLH conjugated synthetic peptide between 243-271 amino acids from the C-terminal region of human EN2.

Dilution

WB~~1:1000
FC~~1:10~50
IHC-P~~1:50~100
E~~Use at an assay dependent concentration.

Format

Purified polyclonal antibody supplied in PBS with 0.09% (W/V) sodium azide. This antibody is purified through a protein A column, followed by peptide affinity purification.

Storage

Maintain refrigerated at 2-8°C for up to 2 weeks. For long term storage store at -20°C in small aliquots to prevent freeze-thaw cycles.

Precautions

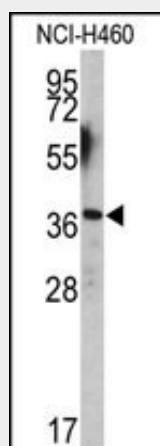
EN2 Antibody (C-term-2) is for research use only and not for use in diagnostic or therapeutic procedures.

EN2 Antibody (C-term-2) - Protein Information**Name** EN2

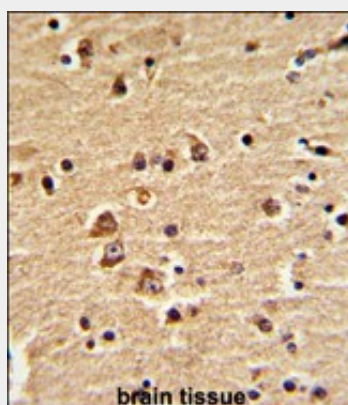
Cellular Location
Nucleus.**EN2 Antibody (C-term-2) - Protocols**

Provided below are standard protocols that you may find useful for product applications.

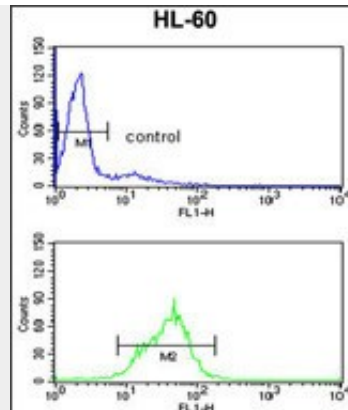
- [Western Blot](#)
- [Blocking Peptides](#)
- [Dot Blot](#)
- [Immunohistochemistry](#)
- [Immunofluorescence](#)
- [Immunoprecipitation](#)
- [Flow Cytometry](#)
- [Cell Culture](#)

EN2 Antibody (C-term-2) - Images

Western blot analysis of EN2 antibody (C-term-2) (Cat.# AP7457d) in NCI-H460 cell line lysates (35ug/lane). EN2 (arrow) was detected using the purified Pab.



Formalin-fixed and paraffin-embedded human brain with EN2 Antibody (C-term-2), which was peroxidase-conjugated to the secondary antibody, followed by DAB staining. This data demonstrates the use of this antibody for immunohistochemistry; clinical relevance has not been evaluated.



EN2 Antibody (C-term-2) (Cat. #AP7457d) flow cytometry analysis of HL-60 cells (bottom histogram) compared to a negative control cell (top histogram). FITC-conjugated goat-anti-rabbit secondary antibodies were used for the analysis.

EN2 Antibody (C-term-2) - Background

EN2 is thought to have a role in controlling development. In *Drosophila*, the protein plays an important role during development in segmentation, where it is required for the formation of posterior compartments. Different mutations in the mouse homologs, En1 and En2, produced different developmental defects that frequently are lethal. This protein has been implicated in the control of pattern formation during development of the central nervous system.

EN2 Antibody (C-term-2) - References

Poole S.J., Law M.L. *Genomics* 4:225-231(1989)
Benayed R., Gharani N. *Am. J. Hum. Genet.* 77:851-868(2005)