

KIF3C Antibody (C-term)
Purified Rabbit Polyclonal Antibody (Pab)
Catalog # AP7466b**Specification**

KIF3C Antibody (C-term) - Product Information

Application	WB, IHC-P, FC,E
Primary Accession	O14782
Reactivity	Human
Host	Rabbit
Clonality	Polyclonal
Isotype	Rabbit IgG
Calculated MW	89454
Antigen Region	713-741

KIF3C Antibody (C-term) - Additional Information**Gene ID** 3797**Other Names**

Kinesin-like protein KIF3C, KIF3C

Target/Specificity

This KIF3C antibody is generated from rabbits immunized with a KLH conjugated synthetic peptide between 713-741 amino acids from the C-terminal region of human KIF3C.

Dilution

WB~~1:1000
IHC-P~~1:50~100
FC~~1:10~50

Format

Purified polyclonal antibody supplied in PBS with 0.09% (W/V) sodium azide. This antibody is prepared by Saturated Ammonium Sulfate (SAS) precipitation followed by dialysis against PBS.

Storage

Maintain refrigerated at 2-8°C for up to 2 weeks. For long term storage store at -20°C in small aliquots to prevent freeze-thaw cycles.

Precautions

KIF3C Antibody (C-term) is for research use only and not for use in diagnostic or therapeutic procedures.

KIF3C Antibody (C-term) - Protein Information**Name** KIF3C**Function** Microtubule-based anterograde translocator for membranous organelles.

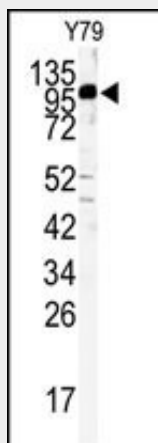
Cellular Location

Cytoplasm, cytoskeleton.

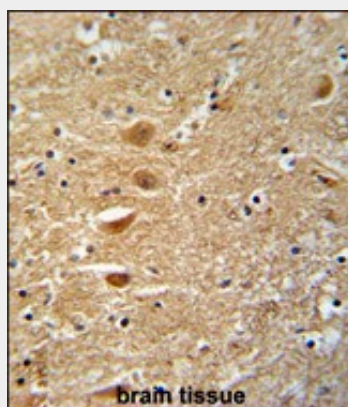
KIF3C Antibody (C-term) - Protocols

Provided below are standard protocols that you may find useful for product applications.

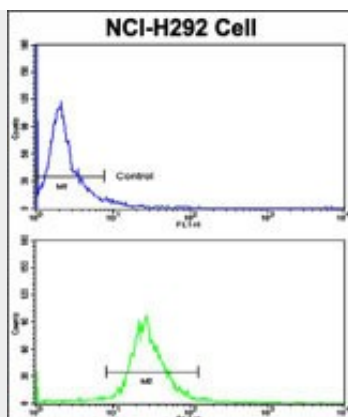
- [Western Blot](#)
- [Blocking Peptides](#)
- [Dot Blot](#)
- [Immunohistochemistry](#)
- [Immunofluorescence](#)
- [Immunoprecipitation](#)
- [Flow Cytometry](#)
- [Cell Culture](#)

KIF3C Antibody (C-term) - Images

Western blot analysis of KIF3C antibody (C-term) (Cat.#AP7466b) in Y79 cell line lysates (35ug/lane). HGK (arrow) was detected using the purified Pab.



KIF3C Antibody (C-term) (Cat. #AP7466b) immunohistochemistry analysis in formalin fixed and paraffin embedded human brain tissue followed by peroxidase conjugation of the secondary antibody and DAB staining. This data demonstrates the use of the KIF3C Antibody (C-term) for immunohistochemistry. Clinical relevance has not been evaluated.



Flow cytometric analysis of NCI-H292 cells using KIF3C Antibody (C-term)(bottom histogram) compared to a negative control cell (top histogram). FITC-conjugated goat-anti-rabbit secondary antibodies were used for the analysis.

KIF3C Antibody (C-term) - Background

KIF3C is a microtubule-based anterograde translocator for membranous organelles.

KIF3C Antibody (C-term) - References

Sardella M., Navone F. Genomics 47:405-408(1998)
Telford E.A.R. Biochem. Biophys. Res. Commun. 242:407-412(1998)