

GPT Antibody (N-term R133)
Purified Rabbit Polyclonal Antibody (Pab)
Catalog # AP7468b**Specification**

GPT Antibody (N-term R133) - Product Information

Application	WB, IHC-P,E
Primary Accession	P24298
Other Accession	A4IFH5
Reactivity	Human, Mouse, Rat
Predicted	Bovine
Host	Rabbit
Clonality	Polyclonal
Isotype	Rabbit IgG
Calculated MW	54637
Antigen Region	118-144

GPT Antibody (N-term R133) - Additional Information**Gene ID** 2875**Other Names**

Alanine aminotransferase 1, ALT1, Glutamate pyruvate transaminase 1, GPT 1, Glutamic--alanine transaminase 1, Glutamic--pyruvic transaminase 1, GPT, AAT1, GPT1

Target/Specificity

This GPT antibody is generated from rabbits immunized with a KLH conjugated synthetic peptide between 118-144 amino acids from the N-terminal region of human GPT.

Dilution

WB~~1:1000
IHC-P~~1:100

Format

Purified polyclonal antibody supplied in PBS with 0.09% (W/V) sodium azide. This antibody is prepared by Saturated Ammonium Sulfate (SAS) precipitation followed by dialysis against PBS.

Storage

Maintain refrigerated at 2-8°C for up to 2 weeks. For long term storage store at -20°C in small aliquots to prevent freeze-thaw cycles.

Precautions

GPT Antibody (N-term R133) is for research use only and not for use in diagnostic or therapeutic procedures.

GPT Antibody (N-term R133) - Protein Information**Name** GPT

Synonyms AAT1, GPT1

Function Catalyzes the reversible transamination between alanine and 2-oxoglutarate to form pyruvate and glutamate. Participates in cellular nitrogen metabolism and also in liver gluconeogenesis starting with precursors transported from skeletal muscles (By similarity).

Cellular Location

Cytoplasm.

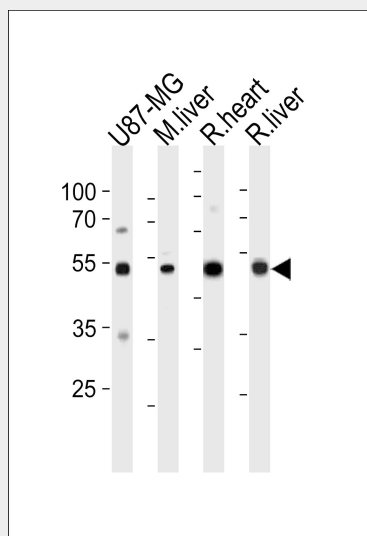
Tissue Location

Liver, kidney, heart, and skeletal muscles. Expressed at moderate levels in the adipose tissue

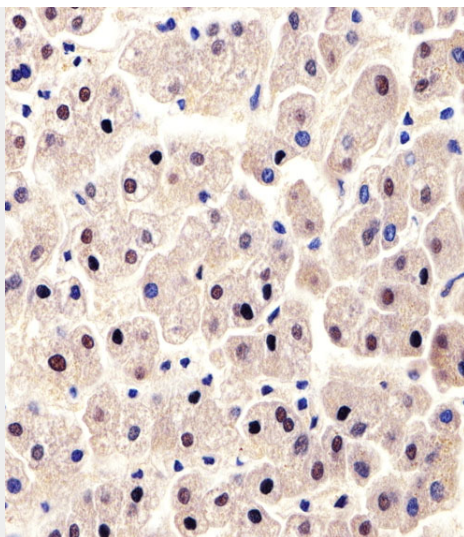
GPT Antibody (N-term R133) - Protocols

Provided below are standard protocols that you may find useful for product applications.

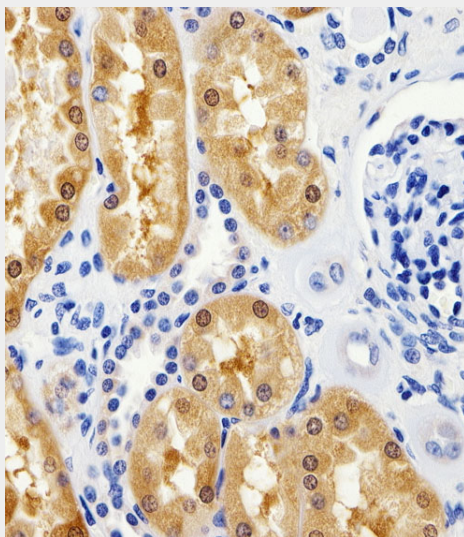
- [Western Blot](#)
- [Blocking Peptides](#)
- [Dot Blot](#)
- [Immunohistochemistry](#)
- [Immunofluorescence](#)
- [Immunoprecipitation](#)
- [Flow Cytometry](#)
- [Cell Culture](#)

GPT Antibody (N-term R133) - Images

GPT Antibody (N-term R133) (Cat. #AP7468b) western blot analysis in U87-MG cell line, mouse liver, and rat heart and liver tissue lysates (35ug/lane). This demonstrates the GPT antibody detected the GPT protein (arrow).



Immunohistochemical analysis of paraffin-embedded H.liver section using GPT Antibody (N-term R133)(Cat#AP7468b). AP7468b was diluted at 1:100 dilution. A peroxidase-conjugated goat anti-rabbit IgG at 1:400 dilution was used as the secondary antibody, followed by DAB staining.



Immunohistochemical analysis of paraffin-embedded H.kidney section using GPT Antibody (N-term R133)(Cat#AP7468b). AP7468b was diluted at 1:100 dilution. A peroxidase-conjugated goat anti-rabbit IgG at 1:400 dilution was used as the secondary antibody, followed by DAB staining.

GPT Antibody (N-term R133) - Background

GPT(Glutamate-pyruvate transaminase), also known as alanine aminotransferase, catalyzes the reversible conversion of L-alanine and alpha-ketoglutarate to L-glutamate and pyruvate. This protein has 2 distinct molecular and genetic forms: one cytoplasmic (soluble) (GPT1) and one mitochondrial (GPT2). See ALTQTL1 and ALTQTL2 for information on quantitative trait loci influencing the plasma level of alanine aminotransferase.

GPT Antibody (N-term R133) - References

Yang R.-Z., Blaileanu G.Genomics 79:445-450(2002)
Ishiguro M., Takio K.Biochemistry 30:10451-10457(1991)