

OPLAH Antibody (N-term)
Purified Rabbit Polyclonal Antibody (Pab)
Catalog # AP7475a**Specification**

OPLAH Antibody (N-term) - Product Information

Application	WB, IHC-P,E
Primary Accession	O14841
Other Accession	P97608
Reactivity	Human, Mouse
Predicted	Rat
Host	Rabbit
Clonality	Polyclonal
Isotype	Rabbit IgG
Calculated MW	137457
Antigen Region	1-30

OPLAH Antibody (N-term) - Additional Information**Gene ID** 26873**Other Names**

5-oxoprolinase, 5-oxo-L-prolinase, 5-OPase, Pyroglutamase, OPLAH

Target/Specificity

This OPLAH antibody is generated from rabbits immunized with a KLH conjugated synthetic peptide between 1-30 amino acids from the N-terminal region of human OPLAH.

Dilution

WB~~1:1000

IHC-P~~1:50~100

Format

Purified polyclonal antibody supplied in PBS with 0.09% (W/V) sodium azide. This antibody is prepared by Saturated Ammonium Sulfate (SAS) precipitation followed by dialysis against PBS.

Storage

Maintain refrigerated at 2-8°C for up to 2 weeks. For long term storage store at -20°C in small aliquots to prevent freeze-thaw cycles.

Precautions

OPLAH Antibody (N-term) is for research use only and not for use in diagnostic or therapeutic procedures.

OPLAH Antibody (N-term) - Protein Information**Name** OPLAH ([HGNC:8149](#))

Function Catalyzes the cleavage of 5-oxo-L-proline to form L-glutamate coupled to the hydrolysis of ATP to ADP and inorganic phosphate.

Cellular Location

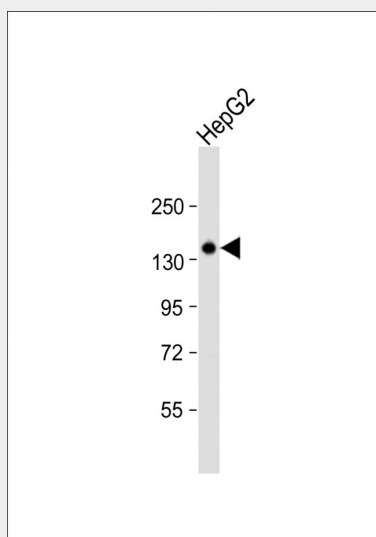
Cytoplasm, cytosol {ECO:0000250|UniProtKB:Q75WB5}

OPLAH Antibody (N-term) - Protocols

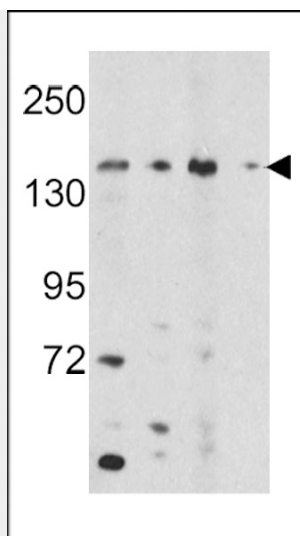
Provided below are standard protocols that you may find useful for product applications.

- [Western Blot](#)
- [Blocking Peptides](#)
- [Dot Blot](#)
- [Immunohistochemistry](#)
- [Immunofluorescence](#)
- [Immunoprecipitation](#)
- [Flow Cytometry](#)
- [Cell Culture](#)

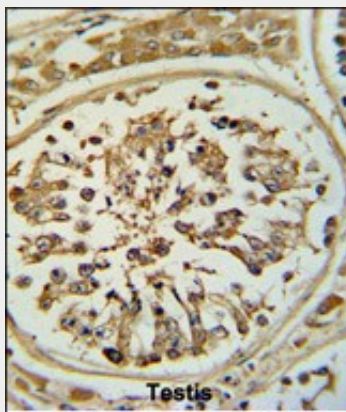
OPLAH Antibody (N-term) - Images



Anti-OPLAH Antibody (N-term) at 1:1000 dilution + HepG2 whole cell lysate Lysates/proteins at 20 µg per lane. Secondary Goat Anti-Rabbit IgG, (H+L), Peroxidase conjugated at 1/10000 dilution. Predicted band size : 137 kDa Blocking/Dilution buffer: 5% NFDM/TBST.



Western blot analysis of OPLAH Antibody (N-term) (Cat.#AP7475a) in K562, HepG2 cell line lysates and mouse bladder, liver tissue lysates (35ug/lane). OPLAH (arrow) was detected using the purified Pab.



Formalin-fixed and paraffin-embedded human testis tissue reacted with OPLAH Antibody (N-term), which was peroxidase-conjugated to the secondary antibody, followed by DAB staining. This data demonstrates the use of this antibody for immunohistochemistry; clinical relevance has not been evaluated.

OPLAH Antibody (N-term) - Background

OPLAH catalyzes the cleavage of 5-oxo-L-proline to form L-glutamate coupled to the hydrolysis of ATP to ADP and inorganic phosphate.

$\text{ATP} + 5\text{-oxo-L-proline} + 2 \text{H}_2\text{O} = \text{ADP} + \text{phosphate} + \text{L-glutamate}.$

OPLAH Antibody (N-term) - References

Watanabe T., Abe K. Biol. Pharm. Bull. 27:288-294(2004)

Bechtel S., Rosenfelder H. BMC Genomics 8:399-399(2007)