

**MAPK12 Antibody (C-term)**  
**Purified Rabbit Polyclonal Antibody (Pab)**  
**Catalog # AP7511a****Specification**

---

**MAPK12 Antibody (C-term) - Product Information**

Application	IHC-P, WB,E
Primary Accession	<a href="#">P53778</a>
Reactivity	Human, Mouse
Host	Rabbit
Clonality	Polyclonal
Isotype	Rabbit IgG
Calculated MW	41940
Antigen Region	336-367

**MAPK12 Antibody (C-term) - Additional Information****Gene ID** 6300**Other Names**

Mitogen-activated protein kinase 12, MAP kinase 12, MAPK 12, Extracellular signal-regulated kinase 6, ERK-6, Mitogen-activated protein kinase p38 gamma, MAP kinase p38 gamma, Stress-activated protein kinase 3, MAPK12, ERK6, SAPK3

**Target/Specificity**

This MAPK12 antibody is generated from rabbits immunized with a KLH conjugated synthetic peptide between 336-367 amino acids from the C-terminal region of human MAPK12.

**Dilution**

IHC-P~~1:10~50

WB~~1:1000

E~~Use at an assay dependent concentration.

**Format**

Purified polyclonal antibody supplied in PBS with 0.09% (W/V) sodium azide. This antibody is prepared by Saturated Ammonium Sulfate (SAS) precipitation followed by dialysis against PBS.

**Storage**

Maintain refrigerated at 2-8°C for up to 2 weeks. For long term storage store at -20°C in small aliquots to prevent freeze-thaw cycles.

**Precautions**

MAPK12 Antibody (C-term) is for research use only and not for use in diagnostic or therapeutic procedures.

**MAPK12 Antibody (C-term) - Protein Information****Name** MAPK12

**Synonyms** ERK6, SAPK3

**Function** Serine/threonine kinase which acts as an essential component of the MAP kinase signal transduction pathway. MAPK12 is one of the four p38 MAPKs which play an important role in the cascades of cellular responses evoked by extracellular stimuli such as pro-inflammatory cytokines or physical stress leading to direct activation of transcription factors such as ELK1 and ATF2. Accordingly, p38 MAPKs phosphorylate a broad range of proteins and it has been estimated that they may have approximately 200 to 300 substrates each. Some of the targets are downstream kinases such as MAPKAPK2, which are activated through phosphorylation and further phosphorylate additional targets. Plays a role in myoblast differentiation and also in the down-regulation of cyclin D1 in response to hypoxia in adrenal cells suggesting MAPK12 may inhibit cell proliferation while promoting differentiation. Phosphorylates DLG1. Following osmotic shock, MAPK12 in the cell nucleus increases its association with nuclear DLG1, thereby causing dissociation of DLG1-SFPQ complexes. This function is independent of its catalytic activity and could affect mRNA processing and/or gene transcription to aid cell adaptation to osmolarity changes in the environment. Regulates UV-induced checkpoint signaling and repair of UV-induced DNA damage and G2 arrest after gamma-radiation exposure. MAPK12 is involved in the regulation of SLC2A1 expression and basal glucose uptake in L6 myotubes; and negatively regulates SLC2A4 expression and contraction-mediated glucose uptake in adult skeletal muscle. C-Jun (JUN) phosphorylation is stimulated by MAPK14 and inhibited by MAPK12, leading to a distinct AP-1 regulation. MAPK12 is required for the normal kinetochore localization of PLK1, prevents chromosomal instability and supports mitotic cell viability. MAPK12- signaling is also positively regulating the expansion of transient amplifying myogenic precursor cells during muscle growth and regeneration.

**Cellular Location**

Cytoplasm. Nucleus. Mitochondrion. Note=Mitochondrial when associated with SH3BP5. In skeletal muscle colocalizes with SNTA1 at the neuromuscular junction and throughout the sarcolemma (By similarity).

**Tissue Location**

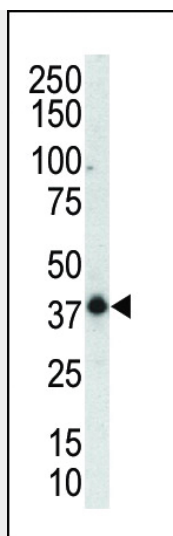
Highly expressed in skeletal muscle and heart.

**MAPK12 Antibody (C-term) - Protocols**

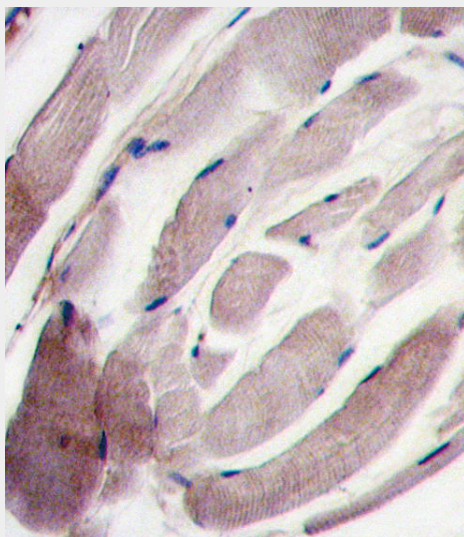
Provided below are standard protocols that you may find useful for product applications.

- [Western Blot](#)
- [Blocking Peptides](#)
- [Dot Blot](#)
- [Immunohistochemistry](#)
- [Immunofluorescence](#)
- [Immunoprecipitation](#)
- [Flow Cytometry](#)
- [Cell Culture](#)

**MAPK12 Antibody (C-term) - Images**



Western blot analysis of anti-P38gamma C-term Pab (Cat. #AP7511a) in mouse muscle tissue lysate. P38gamma (arrow) was detected using purified Pab. Secondary HRP-anti-rabbit was used for signal visualization with chemiluminescence.



Formalin-fixed and paraffin-embedded human skeletal muscle tissue reacted with the P38 gamma antibody (C-term), which was peroxidase-conjugated to the secondary antibody, followed by DAB staining. This data demonstrates the use of this antibody for immunohistochemistry; clinical relevance has not been evaluated.

#### **MAPK12 Antibody (C-term) - Background**

P38 gamma is a member of the MAP kinase family. MAP kinases act as an integration point for multiple biochemical signals, and are involved in a wide variety of cellular processes such as proliferation, differentiation, transcription regulation and development. Activation of members of the mitogen-activated protein kinase family is a major mechanism for transduction of extracellular signals. Stress-activated protein kinases are one subclass of MAP kinases. P38 gamma functions as a signal transducer during differentiation of myoblasts to myotubes.

#### **MAPK12 Antibody (C-term) - References**

Garcia-Lora, A., et al., Cancer Immunol. Immunother. 52(1):59-64 (2003).  
Julien, C., et al., J. Biol. Chem. 278(43):42615-42624 (2003).

Robinson, M.J., et al., J. Biol. Chem. 277(7):5094-5100 (2002).  
Court, N.W., et al., J. Mol. Cell. Cardiol. 34(4):413-426 (2002).  
Wang, X., et al., Mol. Cell. Biol. 20(13):4543-4552 (2000).