

CDKL1 Antibody (C-term)
Purified Rabbit Polyclonal Antibody (Pab)
Catalog # AP7526b**Specification**

CDKL1 Antibody (C-term) - Product Information

Application	WB, IHC-P,E
Primary Accession	Q00532
Reactivity	Human, Mouse
Host	Rabbit
Clonality	Polyclonal
Isotype	Rabbit IgG
Calculated MW	41701
Antigen Region	285-316

CDKL1 Antibody (C-term) - Additional Information**Gene ID** 8814**Other Names**

Cyclin-dependent kinase-like 1, Protein kinase p42 KKIALRE, Serine/threonine-protein kinase KKIALRE, CDKL1

Target/Specificity

This CDKL1 antibody is generated from rabbits immunized with a KLH conjugated synthetic peptide between 285-316 amino acids from the C-terminal region of human CDKL1.

Dilution

WB~~1:1000

IHC-P~~1:50~100

E~~Use at an assay dependent concentration.

Format

Purified polyclonal antibody supplied in PBS with 0.09% (W/V) sodium azide. This antibody is purified through a protein A column, followed by peptide affinity purification.

Storage

Maintain refrigerated at 2-8°C for up to 2 weeks. For long term storage store at -20°C in small aliquots to prevent freeze-thaw cycles.

Precautions

CDKL1 Antibody (C-term) is for research use only and not for use in diagnostic or therapeutic procedures.

CDKL1 Antibody (C-term) - Protein Information**Name** CDKL1 ([HGNC:1781](#))

Cellular Location

Cytoplasm. Nucleus

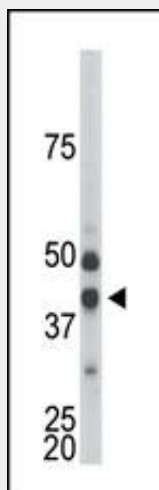
Tissue Location

Highly expressed in kidney, and to a lower extent in ovary.

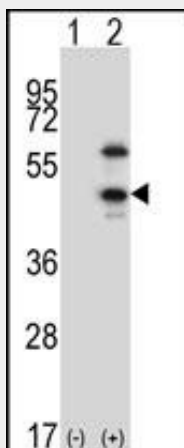
CDKL1 Antibody (C-term) - Protocols

Provided below are standard protocols that you may find useful for product applications.

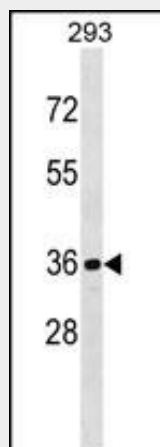
- [Western Blot](#)
- [Blocking Peptides](#)
- [Dot Blot](#)
- [Immunohistochemistry](#)
- [Immunofluorescence](#)
- [Immunoprecipitation](#)
- [Flow Cytometry](#)
- [Cell Culture](#)

CDKL1 Antibody (C-term) - Images

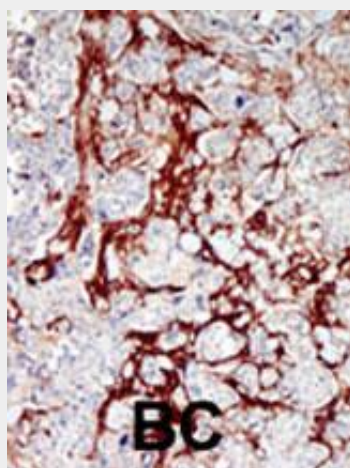
The anti-CDKL1 Pab (Cat. #AP7526b) is used in Western blot to detect CDKL1 in mouse kidney tissue lysate.



Western blot analysis of CDKL1 (arrow) using rabbit polyclonal CDKL1 Antibody (H300) (Cat. #AP7526b). 293 cell lysates (2 ug/lane) either nontransfected (Lane 1) or transiently transfected (Lane 2) with the CDKL1 gene.



CDKL1 Antibody (H300) (Cat. #AP7526b) western blot analysis in 293 cell line lysates (35ug/lane). This demonstrates the CDKL1 antibody detected the CDKL1 protein (arrow).



Formalin-fixed and paraffin-embedded human cancer tissue reacted with the primary antibody, which was peroxidase-conjugated to the secondary antibody, followed by DAB staining. This data demonstrates the use of this antibody for immunohistochemistry; clinical relevance has not been evaluated. BC = breast carcinoma; HC = hepatocarcinoma.

CDKL1 Antibody (C-term) - Background

This gene product is a member of a large family of CDC2-related serine/threonine protein kinases. It accumulates primarily in the nucleus. Alternative splice variants encoding different protein isoforms have been described, but their full-length nature has not been determined.

CDKL1 Antibody (C-term) - References

Meyerson, M., et al., EMBO J. 11(8):2909-2917 (1992).