

**PPBP Antibody (N-term)**  
**Purified Rabbit Polyclonal Antibody (Pab)**  
**Catalog # AP7556a****Specification**

---

**PPBP Antibody (N-term) - Product Information**

Application	WB,E
Primary Accession	<a href="#">P02775</a>
Reactivity	Human
Host	Rabbit
Clonality	Polyclonal
Isotype	Rabbit IgG
Calculated MW	13894
Antigen Region	23-54

**PPBP Antibody (N-term) - Additional Information****Gene ID** 5473**Other Names**

Platelet basic protein, PBP, C-X-C motif chemokine 7, Leukocyte-derived growth factor, LDGF, Macrophage-derived growth factor, MDGF, Small-inducible cytokine B7, Connective tissue-activating peptide III, CTAP-III, LA-PF4, Low-affinity platelet factor IV, TC-2, Connective tissue-activating peptide III(1-81), CTAP-III(1-81), Beta-thromboglobulin, Beta-TG, Neutrophil-activating peptide 2(74), NAP-2(74), Neutrophil-activating peptide 2(73), NAP-2(73), Neutrophil-activating peptide 2, NAP-2, TC-1, Neutrophil-activating peptide 2(1-66), NAP-2(1-66), Neutrophil-activating peptide 2(1-63), NAP-2(1-63), PPBP, CTAP3, CXCL7, SCYB7, TGB1, THBGB1

**Target/Specificity**

This PPBP antibody is generated from rabbits immunized with a KLH conjugated synthetic peptide between 23-54 amino acids from the N-terminal region of human PPBP.

**Dilution**

WB~~1:1000

E~~Use at an assay dependent concentration.

**Format**

Purified polyclonal antibody supplied in PBS with 0.09% (W/V) sodium azide. This antibody is prepared by Saturated Ammonium Sulfate (SAS) precipitation followed by dialysis against PBS.

**Storage**

Maintain refrigerated at 2-8°C for up to 2 weeks. For long term storage store at -20°C in small aliquots to prevent freeze-thaw cycles.

**Precautions**

PPBP Antibody (N-term) is for research use only and not for use in diagnostic or therapeutic procedures.

**PPBP Antibody (N-term) - Protein Information**

**Name** PPBP

**Synonyms** CTAP3, CXCL7, SCYB7, TGB1, THBGB1

**Function** LA-PF4 stimulates DNA synthesis, mitosis, glycolysis, intracellular cAMP accumulation, prostaglandin E2 secretion, and synthesis of hyaluronic acid and sulfated glycosaminoglycan. It also stimulates the formation and secretion of plasminogen activator by human synovial cells. NAP-2 is a ligand for CXCR1 and CXCR2, and NAP-2, NAP-2(73), NAP-2(74), NAP-2(1-66), and most potent NAP-2(1-63) are chemoattractants and activators for neutrophils. TC-1 and TC-2 are antibacterial proteins, in vitro released from activated platelet alpha-granules. CTAP-III(1-81) is more potent than CTAP-III desensitize chemokine-induced neutrophil activation.

**Cellular Location**

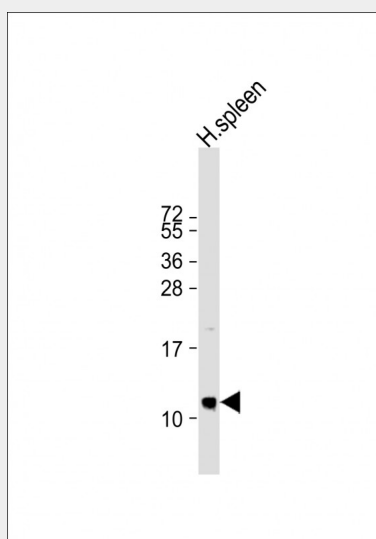
Secreted.

**PPBP Antibody (N-term) - Protocols**

Provided below are standard protocols that you may find useful for product applications.

- [Western Blot](#)
- [Blocking Peptides](#)
- [Dot Blot](#)
- [Immunohistochemistry](#)
- [Immunofluorescence](#)
- [Immunoprecipitation](#)
- [Flow Cytometry](#)
- [Cell Culture](#)

**PPBP Antibody (N-term) - Images**



Anti-PPBP Antibody (N-term) at 1:1000 dilution + human spleen lysate Lysates/proteins at 20 µg per lane. Secondary Goat Anti-Rabbit IgG, (H+L), Peroxidase conjugated at 1/10000 dilution. Predicted band size : 14 kDa Blocking/Dilution buffer: 5% NFDM/TBST.

**PPBP Antibody (N-term) - Background**

PPBP is a platelet-derived growth factor that belongs to the CXC chemokine family. This growth factor is a potent chemoattractant and activator of neutrophils. It has been shown to stimulate various cellular processes including DNA synthesis, mitosis, glycolysis, intracellular cAMP accumulation, prostaglandin E2 secretion, and synthesis of hyaluronic acid and sulfated glycosaminoglycan. It also stimulates the formation and secretion of plasminogen activator by synovial cells.

#### **PPBP Antibody (N-term) - References**

Majumdar S.,J. Biol. Chem. 266:5785-5789(1991)  
Zhang C.,Blood 98:610-617(2001)  
Aivado,M.,Proc. Natl. Acad. Sci. U.S.A. 104 (4), 1307-1312 (2007)