

**HSPA1A/HSPA1B Antibody (Y525)**  
**Affinity Purified Rabbit Polyclonal Antibody (Pab)**  
**Catalog # AP7574c**

## Specification

---

### HSPA1A/HSPA1B Antibody (Y525) - Product Information

|                   |   |
|-------------------|---|
| Application       | WB,E  |
| Primary Accession | <a href="#">P08107</a>  |
| Other Accession   | <a href="#">Q27965</a> , <a href="#">Q27975</a> , <a href="#">P0DMV8</a> , <a href="#">P0DMV9</a> |
| Reactivity        | Human   |
| Predicted         | Bovine  |
| Host              | Rabbit  |
| Clonality         | Polyclonal  |
| Isotype           | Rabbit IgG  |
| Antigen Region    | 503-532   |

### HSPA1A/HSPA1B Antibody (Y525) - Additional Information

#### Other Names

Heat shock 70 kDa protein 1A/1B, Heat shock 70 kDa protein 1/2, HSP70-1/HSP70-2, HSP701/HSP702, HSPA1A, HSPA1, HSX70

#### Target/Specificity

This HSPA1A/HSPA1B antibody is generated from rabbits immunized with a KLH conjugated synthetic peptide between 503-532 amino acids from human HSPA1A/HSPA1B.

#### Dilution

WB~~1:1000

E~~Use at an assay dependent concentration.

#### Format

Purified polyclonal antibody supplied in PBS with 0.09% (W/V) sodium azide. This antibody is purified through a protein A column, followed by peptide affinity purification.

#### Storage

Maintain refrigerated at 2-8°C for up to 2 weeks. For long term storage store at -20°C in small aliquots to prevent freeze-thaw cycles.

#### Precautions

HSPA1A/HSPA1B Antibody (Y525) is for research use only and not for use in diagnostic or therapeutic procedures.

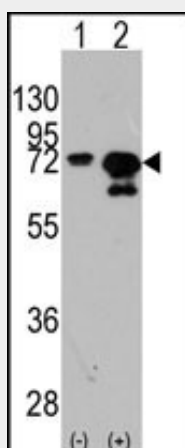
### HSPA1A/HSPA1B Antibody (Y525) - Protein Information

### HSPA1A/HSPA1B Antibody (Y525) - Protocols

Provided below are standard protocols that you may find useful for product applications.

- [Western Blot](#)
- [Blocking Peptides](#)
- [Dot Blot](#)
- [Immunohistochemistry](#)
- [Immunofluorescence](#)
- [Immunoprecipitation](#)
- [Flow Cytometry](#)
- [Cell Culture](#)

#### **HSPA1A/HSPA1B Antibody (Y525) - Images**



Western blot analysis of HSPA1A (arrow) using rabbit polyclonal HSPA1A Antibody (Y525) (Cat.#AP7574c). 293 cell lysates (2 ug/lane) either nontransfected (Lane 1) or transiently transfected with the HSPA1A gene (Lane 2) (Origene Technologies).

#### **HSPA1A/HSPA1B Antibody (Y525) - Background**

HSPA1A is a member of the heat shock protein 70 family. In conjunction with other heat shock proteins, this protein stabilizes existing proteins against aggregation and mediates the folding of newly translated proteins in the cytosol and in organelles. It is also involved in the ubiquitin-proteasome pathway through interaction with the AU-rich element RNA-binding protein 1.

#### **HSPA1A/HSPA1B Antibody (Y525) - References**

- Mueller, T., et al., Transplantation 78(2):292-295 (2004).  
Fekete, A., et al., Pediatr. Res. 54(4):452-455 (2003).  
Broquet, A.H., et al., J. Biol. Chem. 278(24):21601-21606 (2003).  
Bruce, C.R., et al., Diabetes 52(9):2338-2345 (2003).  
Anwar, A., et al., J. Biol. Chem. 277(16):14060-14067 (2002).