

LGALS1 Antibody
Purified Rabbit Polyclonal Antibody (Pab)
Catalog # AP7576a**Specification**

LGALS1 Antibody - Product Information

Application	WB,E
Primary Accession	P09382
Reactivity	Human
Host	Rabbit
Clonality	Polyclonal
Isotype	Rabbit IgG
Calculated MW	14716

LGALS1 Antibody - Additional Information**Gene ID** 3956**Other Names**

Galectin-1, Gal-1, 14 kDa laminin-binding protein, HLBP14, 14 kDa lectin, Beta-galactoside-binding lectin L-14-I, Galaptin, HBL, HPL, Lactose-binding lectin 1, Lectin galactoside-binding soluble 1, Putative MAPK-activating protein PM12, S-Lac lectin 1, LGALS1

Target/Specificity

This LGALS1 antibody is generated from rabbits immunized with human recombinant GLT protein.

Dilution

WB~~1:1000

Format

Purified polyclonal antibody supplied in PBS with 0.09% (W/V) sodium azide. This antibody is prepared by Saturated Ammonium Sulfate (SAS) precipitation followed by dialysis against PBS.

Storage

Maintain refrigerated at 2-8°C for up to 2 weeks. For long term storage store at -20°C in small aliquots to prevent freeze-thaw cycles.

Precautions

LGALS1 Antibody is for research use only and not for use in diagnostic or therapeutic procedures.

LGALS1 Antibody - Protein Information**Name** LGALS1 ([HGNC:6561](#))

Function Lectin that binds beta-galactoside and a wide array of complex carbohydrates. Plays a role in regulating apoptosis, cell proliferation and cell differentiation. Inhibits CD45 protein phosphatase activity and therefore the dephosphorylation of Lyn kinase. Strong inducer of T-cell apoptosis.

Cellular Location

Secreted, extracellular space, extracellular matrix. Cytoplasm. Secreted Note=Can be secreted; the secretion is dependent on protein unfolding and facilitated by the cargo receptor TMED10; it results in protein translocation from the cytoplasm into the ERGIC (endoplasmic reticulum- Golgi intermediate compartment) followed by vesicle entry and secretion.

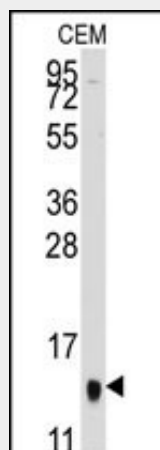
Tissue Location

Expressed in placenta, maternal decidua and fetal membranes. Within placenta, expressed in trophoblasts, stromal cells, villous endothelium, syncytiotrophoblast apical membrane and villous stroma. Within fetal membranes, expressed in amnion, chorioamniotic mesenchyma and chorion (at protein level). Expressed in cardiac, smooth, and skeletal muscle, neurons, thymus, kidney and hematopoietic cells.

LGALS1 Antibody - Protocols

Provided below are standard protocols that you may find useful for product applications.

- [Western Blot](#)
- [Blocking Peptides](#)
- [Dot Blot](#)
- [Immunohistochemistry](#)
- [Immunofluorescence](#)
- [Immunoprecipitation](#)
- [Flow Cytometry](#)
- [Cell Culture](#)

LGALS1 Antibody - Images

Western blot analysis of anti-GLT Pab (Cat.#AP7576a) in CEM cell line lysates (35ug/lane). GLT (arrow) was detected using the purified Pab.

LGALS1 Antibody - Background

The galectins are a family of beta-galactoside-binding proteins implicated in modulating cell-cell and cell-matrix interactions. LGALS1 may act as an autocrine negative growth factor that regulates cell proliferation.

LGALS1 Antibody - References

Bi, S., J. Biol. Chem. 283 (18), 12248-12258 (2008)

Le Mercier,M., J. Neuropathol. Exp. Neurol. 67 (5), 456-469 (2008)
Pacienza,N., FASEB J. 22 (4), 1113-1123 (2008)