

**RASGRF1 Antibody (S929)**  
**Affinity Purified Rabbit Polyclonal Antibody (Pab)**  
**Catalog # AP7582b**

**Specification**

---

**RASGRF1 Antibody (S929) - Product Information**

Application	IHC-P, WB,E
Primary Accession	<a href="#">Q13972</a>
Reactivity	Human
Host	Rabbit
Clonality	Polyclonal
Isotype	Rabbit IgG
Antigen Region	907-936

**RASGRF1 Antibody (S929) - Additional Information**

**Gene ID** 5923

**Other Names**

Ras-specific guanine nucleotide-releasing factor 1, Ras-GRF1, Guanine nucleotide-releasing protein, GNRP, Ras-specific nucleotide exchange factor CDC25, RASGRF1, CDC25, GNRP, GRF1

**Target/Specificity**

This RASGRF1 antibody is generated from rabbits immunized with a KLH conjugated synthetic peptide between 907-936 amino acids from human RASGRF1.

**Dilution**

IHC-P~~1:10~50

WB~~1:1000

E~~Use at an assay dependent concentration.

**Format**

Purified polyclonal antibody supplied in PBS with 0.09% (W/V) sodium azide. This antibody is purified through a protein A column, followed by peptide affinity purification.

**Storage**

Maintain refrigerated at 2-8°C for up to 2 weeks. For long term storage store at -20°C in small aliquots to prevent freeze-thaw cycles.

**Precautions**

RASGRF1 Antibody (S929) is for research use only and not for use in diagnostic or therapeutic procedures.

**RASGRF1 Antibody (S929) - Protein Information**

**Name** RASGRF1

**Synonyms** CDC25, GNRP, GRF1

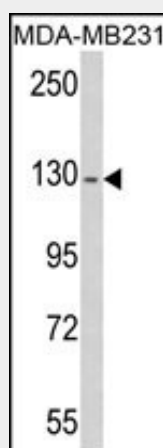
**Function** Promotes the exchange of Ras-bound GDP by GTP.

### RASGRF1 Antibody (S929) - Protocols

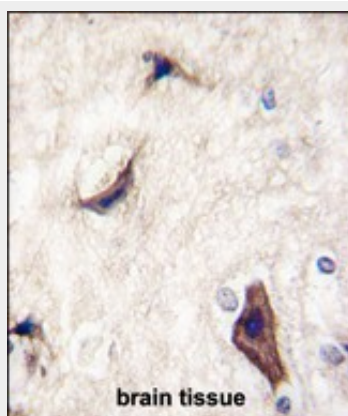
Provided below are standard protocols that you may find useful for product applications.

- [Western Blot](#)
- [Blocking Peptides](#)
- [Dot Blot](#)
- [Immunohistochemistry](#)
- [Immunofluorescence](#)
- [Immunoprecipitation](#)
- [Flow Cytometry](#)
- [Cell Culture](#)

### RASGRF1 Antibody (S929) - Images



Western blot analysis of RASGRF1 antibody (S929) (Cat. #AP7582b) in MDA-MB231 cell line lysates (35ug/lane). RASGRF1 (arrow) was detected using the purified Pab.



Formalin-fixed and paraffin-embedded human brain tissue reacted with RASGRF1 Antibody (S929) (Cat.#AP7582b), which was peroxidase-conjugated to the secondary antibody, followed by DAB staining. This data demonstrates the use of this antibody for immunohistochemistry; clinical relevance has not been evaluated.

### RASGRF1 Antibody (S929) - Background

RASGRF1 is a guanine nucleotide exchange factor (GEF) similar to the *Saccharomyces cerevisiae* CDC25 gene product. Functional analysis has demonstrated that this protein stimulates the dissociation of GDP from RAS protein. Studies of the similar gene in mouse suggested that the Ras-GEF activity of this protein in brain can be activated by Ca<sup>2+</sup> influx, muscarinic receptors, and G protein beta-gamma subunit. Mouse studies also indicated that the Ras-GEF signaling pathway mediated by this protein may be important for long-term memory.

#### **RASGRF1 Antibody (S929) - References**

Iguchi,T., Int. J. Oncol. 31 (2), 285-291 (2007)  
Holmes,R., Mol. Cell. Biol. 26 (24), 9564-9570 (2006)