

**AXL Antibody (C-term)**  
**Purified Rabbit Polyclonal Antibody (Pab)**  
**Catalog # AP7602b****Specification**

---

**AXL Antibody (C-term) - Product Information**

Application	IHC-P, WB,E
Primary Accession	<a href="#">P30530</a>
Reactivity	Human
Host	Rabbit
Clonality	Polyclonal
Isotype	Rabbit IgG
Antigen Region	863-894

**AXL Antibody (C-term) - Additional Information****Gene ID** 558**Other Names**

Tyrosine-protein kinase receptor UFO, AXL oncogene, AXL, UFO

**Target/Specificity**

This AXL antibody is generated from rabbits immunized with a KLH conjugated synthetic peptide between 863-894 amino acids from the C-terminal region of human AXL.

**Dilution**

IHC-P~~1:50~100

WB~~1:1000

E~~Use at an assay dependent concentration.

**Format**

Purified polyclonal antibody supplied in PBS with 0.09% (W/V) sodium azide. This antibody is prepared by Saturated Ammonium Sulfate (SAS) precipitation followed by dialysis against PBS.

**Storage**

Maintain refrigerated at 2-8°C for up to 2 weeks. For long term storage store at -20°C in small aliquots to prevent freeze-thaw cycles.

**Precautions**

AXL Antibody (C-term) is for research use only and not for use in diagnostic or therapeutic procedures.

**AXL Antibody (C-term) - Protein Information****Name** AXL**Synonyms** UFO

**Function** Receptor tyrosine kinase that transduces signals from the extracellular matrix into the cytoplasm by binding growth factor GAS6 and which is thus regulating many physiological processes including cell survival, cell proliferation, migration and differentiation. Ligand binding at the cell surface induces dimerization and autophosphorylation of AXL. Following activation by ligand, AXL binds and induces tyrosine phosphorylation of PI3-kinase subunits PIK3R1, PIK3R2 and PIK3R3; but also GRB2, PLCG1, LCK and PTPN11. Other downstream substrate candidates for AXL are CBL, NCK2, SOCS1 and TNS2. Recruitment of GRB2 and phosphatidylinositol 3 kinase regulatory subunits by AXL leads to the downstream activation of the AKT kinase. GAS6/AXL signaling plays a role in various processes such as endothelial cell survival during acidification by preventing apoptosis, optimal cytokine signaling during human natural killer cell development, hepatic regeneration, gonadotropin-releasing hormone neuron survival and migration, platelet activation, or regulation of thrombotic responses. Also plays an important role in inhibition of Toll-like receptors (TLRs)-mediated innate immune response.

#### **Cellular Location**

Cell membrane; Single-pass type I membrane protein

#### **Tissue Location**

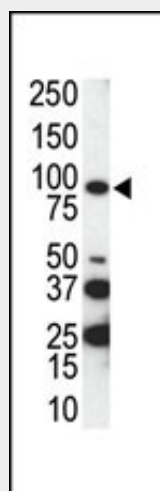
Highly expressed in metastatic colon tumors. Expressed in primary colon tumors. Weakly expressed in normal colon tissue.

#### **AXL Antibody (C-term) - Protocols**

Provided below are standard protocols that you may find useful for product applications.

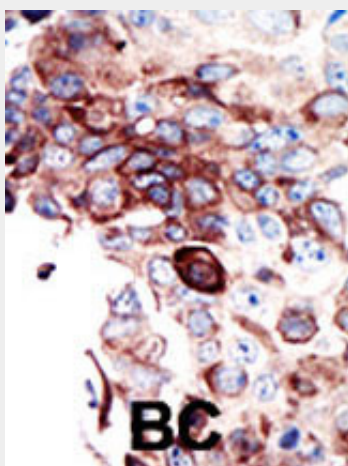
- [Western Blot](#)
- [Blocking Peptides](#)
- [Dot Blot](#)
- [Immunohistochemistry](#)
- [Immunofluorescence](#)
- [Immunoprecipitation](#)
- [Flow Cytometry](#)
- [Cell Culture](#)

#### **AXL Antibody (C-term) - Images**



Western blot analysis of anti-AXL C-term Pab (Cat. #AP7602b) in SKBR3 cell lysate. AXL (arrow) was detected using purified Pab. Secondary HRP-anti-rabbit was used for signal visualization with

chemiluminescence.



Formalin-fixed and paraffin-embedded human cancer tissue reacted with the primary antibody, which was peroxidase-conjugated to the secondary antibody, followed by DAB staining. This data demonstrates the use of this antibody for immunohistochemistry; clinical relevance has not been evaluated. BC = breast carcinoma; HC = hepatocarcinoma.

#### **AXL Antibody (C-term) - Background**

AXL, a member of the AXL/UFO subfamily of Tyr protein kinases, may function as a signal transducer between specific cell types of mesodermal origin. This Type I membrane protein has transforming potential in patients with chronic myeloproliferative disorder or chronic myelocytic leukemia. The protein contains 2 putative fibronectin type III domains and 2 putative immunoglobulin-like C2-type domains.

#### **AXL Antibody (C-term) - References**

Lee, S.T., et al., *Oncogene* 8(12):3403-3410 (1993).  
Janssen, J.W., et al., *Oncogene* 6(11):2113-2120 (1991).  
O'Bryan, J.P., et al., *Mol. Cell. Biol.* 11(10):5016-5031 (1991).  
Partanen, J., et al., *Proc. Natl. Acad. Sci. U.S.A.* 87(22):8913-8917 (1990).

#### **AXL Antibody (C-term) - Citations**

- [Role of axl in preeclamptic EPCs functions.](#)