

LUM Antibody (N-term)
Purified Rabbit Polyclonal Antibody (Pab)
Catalog # AP7605a**Specification**

LUM Antibody (N-term) - Product Information

Application	FC, IHC-P, WB,E
Primary Accession	P51884
Other Accession	P51886 , P51885
Reactivity	Human, Mouse
Predicted	Rat
Host	Rabbit
Clonality	Polyclonal
Isotype	Rabbit IgG
Calculated MW	38429
Antigen Region	64-91

LUM Antibody (N-term) - Additional Information**Gene ID** 4060**Other Names**

Lumican, Keratan sulfate proteoglycan lumican, KSPG lumican, LUM, LDC, SLRR2D

Target/Specificity

This LUM antibody is generated from rabbits immunized with a KLH conjugated synthetic peptide between 64-91 amino acids from the N-terminal region of human LUM.

Dilution

FC~~1:10~50

IHC-P~~1:50~100

WB~~1:1000

E~~Use at an assay dependent concentration.

Format

Purified polyclonal antibody supplied in PBS with 0.09% (W/V) sodium azide. This antibody is prepared by Saturated Ammonium Sulfate (SAS) precipitation followed by dialysis against PBS.

Storage

Maintain refrigerated at 2-8°C for up to 2 weeks. For long term storage store at -20°C in small aliquots to prevent freeze-thaw cycles.

Precautions

LUM Antibody (N-term) is for research use only and not for use in diagnostic or therapeutic procedures.

LUM Antibody (N-term) - Protein Information

Name LUM

Synonyms LDC, SLRR2D

Cellular Location

Secreted, extracellular space, extracellular matrix

Tissue Location

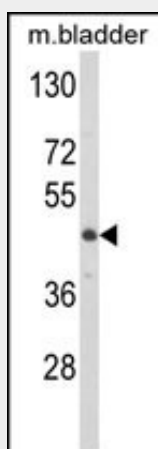
Cornea and other tissues.

LUM Antibody (N-term) - Protocols

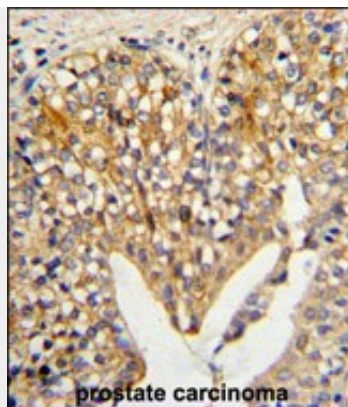
Provided below are standard protocols that you may find useful for product applications.

- [Western Blot](#)
- [Blocking Peptides](#)
- [Dot Blot](#)
- [Immunohistochemistry](#)
- [Immunofluorescence](#)
- [Immunoprecipitation](#)
- [Flow Cytometry](#)
- [Cell Culture](#)

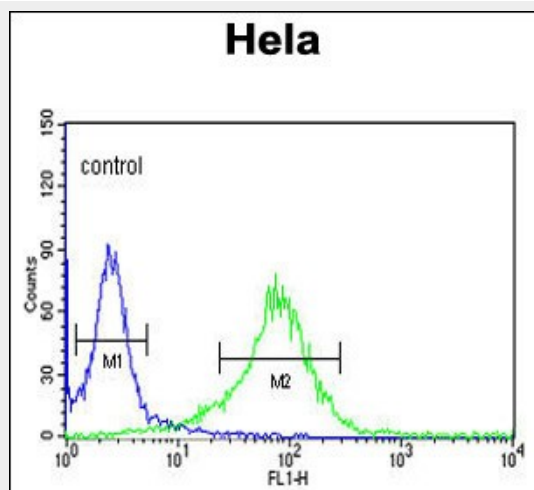
LUM Antibody (N-term) - Images



Western blot analysis of LUM Antibody (N-term) (Cat.#AP7605a) in mouse bladder tissue lysates (35ug/lane). LUM (arrow) was detected using the purified Pab.



Formalin-fixed and paraffin-embedded human prostate carcinoma reacted with LUM Antibody (N-term), which was peroxidase-conjugated to the secondary antibody, followed by DAB staining. This data demonstrates the use of this antibody for immunohistochemistry; clinical relevance has not been evaluated.



LUM Antibody (N-term) (Cat. #AP7605a) flow cytometric analysis of HeLa cells (right histogram) compared to a negative control cell (left histogram). FITC-conjugated goat-anti-rabbit secondary antibodies were used for the analysis.

LUM Antibody (N-term) - Background

LUM is a member of the small leucine-rich proteoglycan (SLRP) family that includes decorin, biglycan, fibromodulin, keratocan, epiphykan, and osteoglycin. In these bifunctional molecules, this protein moiety binds collagen fibrils and the highly charged hydrophilic glycosaminoglycans regulate interfibrillar spacings. The protein is the major keratan sulfate proteoglycan of the cornea but is also distributed in interstitial collagenous matrices throughout the body. Lumican may regulate collagen fibril organization and circumferential growth, corneal transparency, and epithelial cell migration and tissue repair.

LUM Antibody (N-term) - References

Wang,P., Li,S. Invest. Ophthalmol. Vis. Sci. 50 (4), 1546-1551 (2009)
Matsuda,Y., Yamamoto,T. Int. J. Oncol. 33 (6), 1177-1185 (2008)
Kelemen,L.E., Couch,F.J. Breast Cancer Res. 10 (6), R98 (2008)

LUM Antibody (N-term) - Citations

- [Label-free quantitative proteomic analysis of right ventricular remodeling in infant Tetralogy of Fallot patients.](#)

