

EPHA10 Antibody (N-term)
Purified Rabbit Polyclonal Antibody (Pab)
Catalog # AP7614a**Specification**

EPHA10 Antibody (N-term) - Product Information

Application	WB, IHC-P,E
Primary Accession	Q5JZY3
Other Accession	Q8BYG9 , P54759 , Q61772 , Q15375 , Q42422
Reactivity	Human
Predicted	Chicken, Mouse, Rat
Host	Rabbit
Clonality	Polyclonal
Isotype	Rabbit IgG
Antigen Region	149-179

EPHA10 Antibody (N-term) - Additional Information**Gene ID** 284656**Other Names**

Ephrin type-A receptor 10, EPHA10

Target/Specificity

This EPHA10 antibody is generated from rabbits immunized with a KLH conjugated synthetic peptide between 149-179 amino acids from the N-terminal region of human EPHA10.

Dilution

WB~~1:1000

IHC-P~~1:10~50

E~~Use at an assay dependent concentration.

Format

Purified polyclonal antibody supplied in PBS with 0.09% (W/V) sodium azide. This antibody is prepared by Saturated Ammonium Sulfate (SAS) precipitation followed by dialysis against PBS.

Storage

Maintain refrigerated at 2-8°C for up to 2 weeks. For long term storage store at -20°C in small aliquots to prevent freeze-thaw cycles.

Precautions

EPHA10 Antibody (N-term) is for research use only and not for use in diagnostic or therapeutic procedures.

EPHA10 Antibody (N-term) - Protein Information**Name** EPHA10

Function Receptor for members of the ephrin-A family. Binds to EFNA3, EFNA4 and EFNA5.

Cellular Location

[Isoform 1]: Cell membrane; Single- pass type I membrane protein [Isoform 2]: Secreted.

Tissue Location

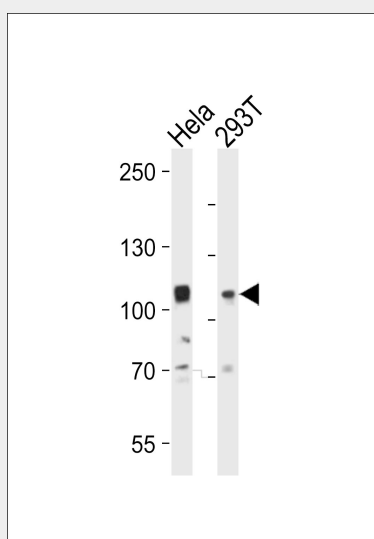
Mainly expressed in testis.

EPHA10 Antibody (N-term) - Protocols

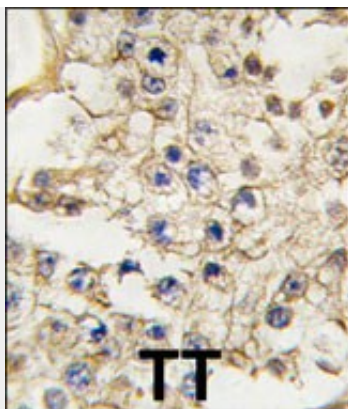
Provided below are standard protocols that you may find useful for product applications.

- [Western Blot](#)
- [Blocking Peptides](#)
- [Dot Blot](#)
- [Immunohistochemistry](#)
- [Immunofluorescence](#)
- [Immunoprecipitation](#)
- [Flow Cytometry](#)
- [Cell Culture](#)

EPHA10 Antibody (N-term) - Images



Western blot analysis of lysates from HeLa, 293T cell line (from left to right), using EPHA10 Antibody (N-term)(Cat. #AP7614a). AP7614a was diluted at 1:1000 at each lane. A goat anti-rabbit IgG H&L(HRP) at 1:10000 dilution was used as the secondary antibody. Lysates at 20ug per lane.



Formalin-fixed and paraffin-embedded human testis tissue reacted with EPHA10 antibody (N-term), which was peroxidase-conjugated to the secondary antibody, followed by DAB staining. This data demonstrates the use of this antibody for immunohistochemistry; clinical relevance has not been evaluated.

EPHA10 Antibody (N-term) - Background

EPHA10 is a receptor for members of the ephrin-A family. It binds to EFNA3, EFNA4 and EFNA5.

EPHA10 Antibody (N-term) - References

Aasheim,H.C., Biochim. Biophys. Acta 1723 (1-3), 1-7 (2005)