

EPHA10 Antibody (Center)
Purified Rabbit Polyclonal Antibody (Pab)
Catalog # AP7614c**Specification**

EPHA10 Antibody (Center) - Product Information

Application	WB, IHC-P,E
Primary Accession	Q5JZY3
Reactivity	Human
Host	Rabbit
Clonality	Polyclonal
Isotype	Rabbit IgG
Calculated MW	109716
Antigen Region	440-469

EPHA10 Antibody (Center) - Additional Information**Gene ID** 284656**Other Names**

Ephrin type-A receptor 10, EPHA10

Target/Specificity

This EPHA10 antibody is generated from rabbits immunized with a KLH conjugated synthetic peptide between 440-469 amino acids from the Central region of human EPHA10.

Dilution

WB~~1:1000

IHC-P~~1:10~50

E~~Use at an assay dependent concentration.

Format

Purified polyclonal antibody supplied in PBS with 0.09% (W/V) sodium azide. This antibody is prepared by Saturated Ammonium Sulfate (SAS) precipitation followed by dialysis against PBS.

Storage

Maintain refrigerated at 2-8°C for up to 2 weeks. For long term storage store at -20°C in small aliquots to prevent freeze-thaw cycles.

Precautions

EPHA10 Antibody (Center) is for research use only and not for use in diagnostic or therapeutic procedures.

EPHA10 Antibody (Center) - Protein Information**Name** EPHA10**Function** Receptor for members of the ephrin-A family. Binds to EFNA3, EFNA4 and EFNA5.

Cellular Location

[Isoform 1]: Cell membrane; Single- pass type I membrane protein [Isoform 2]: Secreted.

Tissue Location

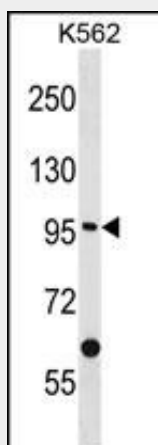
Mainly expressed in testis.

EPHA10 Antibody (Center) - Protocols

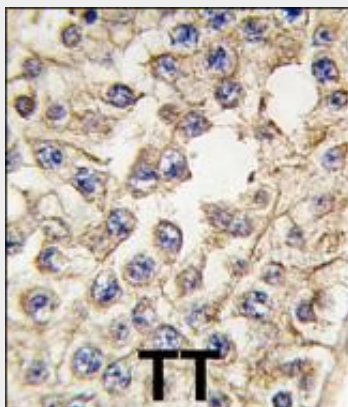
Provided below are standard protocols that you may find useful for product applications.

- [Western Blot](#)
- [Blocking Peptides](#)
- [Dot Blot](#)
- [Immunohistochemistry](#)
- [Immunofluorescence](#)
- [Immunoprecipitation](#)
- [Flow Cytometry](#)
- [Cell Culture](#)

EPHA10 Antibody (Center) - Images



EPHA10 Antibody (Center) (Cat. #AP7614c) western blot analysis in K562 cell line lysates (35ug/lane). This demonstrates the EPHA10 antibody detected the EPHA10 protein (arrow).



Formalin-fixed and paraffin-embedded human testis tissue reacted with EPHA10 antibody (Center), which was peroxidase-conjugated to the secondary antibody, followed by DAB staining.

This data demonstrates the use of this antibody for immunohistochemistry; clinical relevance has not been evaluated.

EPHA10 Antibody (Center) - Background

EPHA10 is a receptor for members of the ephrin-A family. It binds to EFNA3, EFNA4 and EFNA5.

EPHA10 Antibody (Center) - References

Aasheim, H.C., Biochim. Biophys. Acta 1723 (1-3), 1-7 (2005)