

**PCSK2 Antibody (Center)**  
**Purified Rabbit Polyclonal Antibody (Pab)**  
**Catalog # AP7617c**

**Specification**

---

**PCSK2 Antibody (Center) - Product Information**

Application	FC, IHC-P, WB,E
Primary Accession	<a href="#">P16519</a>
Other Accession	<a href="#">P28841</a> , <a href="#">Q03333</a> , <a href="#">P21661</a> , <a href="#">Q9GLR0</a>
Reactivity	Human
Predicted	Bovine, Mouse, Pig, Rat
Host	Rabbit
Clonality	Polyclonal
Isotype	Rabbit IgG
Calculated MW	70565
Antigen Region	318-346

**PCSK2 Antibody (Center) - Additional Information**

**Gene ID** 5126

**Other Names**

Neuroendocrine convertase 2, NEC 2, KEX2-like endoprotease 2, Prohormone convertase 2, Proprotein convertase 2, PC2, PCSK2, NEC2

**Target/Specificity**

This PCSK2 antibody is generated from rabbits immunized with a KLH conjugated synthetic peptide between 318-346 amino acids from the Central region of human PCSK2.

**Dilution**

FC~~1:10~50  
IHC-P~~1:10~50  
WB~~1:1000  
E~~Use at an assay dependent concentration.

**Format**

Purified polyclonal antibody supplied in PBS with 0.09% (W/V) sodium azide. This antibody is prepared by Saturated Ammonium Sulfate (SAS) precipitation followed by dialysis against PBS.

**Storage**

Maintain refrigerated at 2-8°C for up to 2 weeks. For long term storage store at -20°C in small aliquots to prevent freeze-thaw cycles.

**Precautions**

PCSK2 Antibody (Center) is for research use only and not for use in diagnostic or therapeutic procedures.

**PCSK2 Antibody (Center) - Protein Information**

**Name** PCSK2

**Synonyms** NEC2

**Function** Serine endopeptidase which is involved in the processing of hormone and other protein precursors at sites comprised of pairs of basic amino acid residues. Responsible for the release of glucagon from proglucagon in pancreatic A cells.

**Cellular Location**

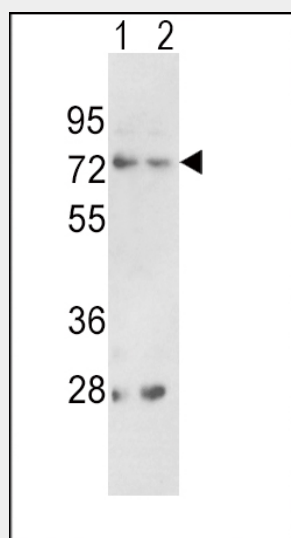
Cytoplasmic vesicle, secretory vesicle. Secreted. Note=Localized in the secretion granules

**PCSK2 Antibody (Center) - Protocols**

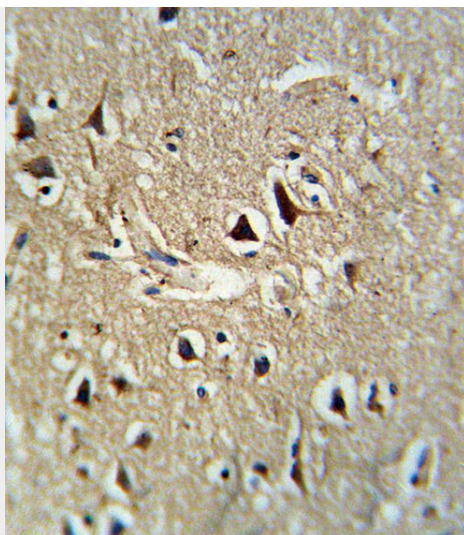
Provided below are standard protocols that you may find useful for product applications.

- [Western Blot](#)
- [Blocking Peptides](#)
- [Dot Blot](#)
- [Immunohistochemistry](#)
- [Immunofluorescence](#)
- [Immunoprecipitation](#)
- [Flow Cytometry](#)
- [Cell Culture](#)

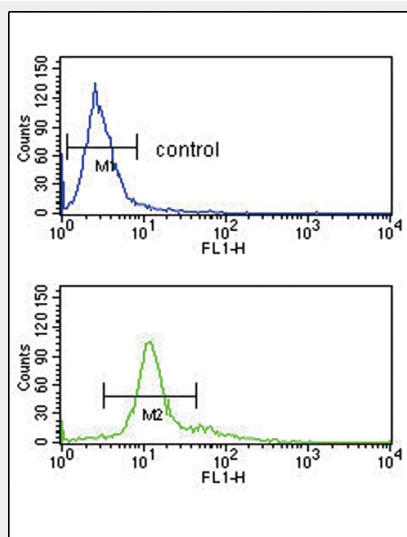
**PCSK2 Antibody (Center) - Images**



Western blot analysis of PCSK2 Antibody (Center) (Cat.#AP7617c) in 293(lane 1), K562(lane 2) cell line lysates (35ug/lane). PCSK2 (arrow) was detected using the purified Pab.



Formalin-fixed and paraffin-embedded human brain tissue reacted with PCSK2 Antibody (Center), which was peroxidase-conjugated to the secondary antibody, followed by DAB staining. This data demonstrates the use of this antibody for immunohistochemistry; clinical relevance has not been evaluated.



PCSK2 Antibody (Center) (Cat. #AP7617c) flow cytometry analysis of K562 cells (bottom histogram) compared to a negative control cell (top histogram). FITC-conjugated goat-anti-rabbit secondary antibodies were used for the analysis.

### PCSK2 Antibody (Center) - Background

PCSK2 belongs to the subtilisin-like proprotein convertase family. The members of this family are proprotein convertases that process latent precursor proteins into their biologically active products. This protein is a proinsulin-processing enzyme that plays a key role in regulating insulin biosynthesis. The protein is also known to cleave proopiomelanocortin, proenkephalin, prodynorphin and proluteinizing-hormone-releasing hormone.

### PCSK2 Antibody (Center) - References

- Leak, T.S., Keene, K.L. Mol. Genet. Metab. 92 (1-2), 145-150 (2007)
- Shen, X., Li, Q.L. Am. J. Physiol. Endocrinol. Metab. 288 (1), E236-E245 (2005)
- Tzimas, G.N., Chevet, E. BMC Cancer 5, 149 (2005)

Seidah,N.G., Mattei,M.G. Genomics 11 (1), 103-107 (1991)