

POLDIP2 Antibody (Center)
Purified Rabbit Polyclonal Antibody (Pab)
Catalog # AP7626c**Specification**

POLDIP2 Antibody (Center) - Product Information

Application	WB,E
Primary Accession	O9Y2S7
Other Accession	O91VA6
Reactivity	Human
Predicted	Mouse
Host	Rabbit
Clonality	Polyclonal
Isotype	Rabbit IgG
Calculated MW	42033
Antigen Region	105-133

POLDIP2 Antibody (Center) - Additional Information**Gene ID** 26073**Other Names**

Polymerase delta-interacting protein 2, 38 kDa DNA polymerase delta interaction protein, p38, POLDIP2, PDIP38, POLD4

Target/Specificity

This POLDIP2 antibody is generated from rabbits immunized with a KLH conjugated synthetic peptide between 105-133 amino acids from the Central region of human POLDIP2.

Dilution

WB~~1:1000

E~~Use at an assay dependent concentration.

Format

Purified polyclonal antibody supplied in PBS with 0.09% (W/V) sodium azide. This antibody is prepared by Saturated Ammonium Sulfate (SAS) precipitation followed by dialysis against PBS.

Storage

Maintain refrigerated at 2-8°C for up to 2 weeks. For long term storage store at -20°C in small aliquots to prevent freeze-thaw cycles.

Precautions

POLDIP2 Antibody (Center) is for research use only and not for use in diagnostic or therapeutic procedures.

POLDIP2 Antibody (Center) - Protein Information**Name** POLDIP2 {ECO:0000303|PubMed:26984527, ECO:0000312|HGNC:HGNC:23781}

Function Involved in DNA damage tolerance by regulating translesion synthesis (TLS) of templates carrying DNA damage lesions such as 8oxoG and abasic sites (PubMed:[24191025](#)). May act by stimulating activity of DNA polymerases involved in TLS, such as PRIMPOL and polymerase delta (POLD1) (PubMed:[24191025](#), PubMed:[26984527](#)).

Cellular Location

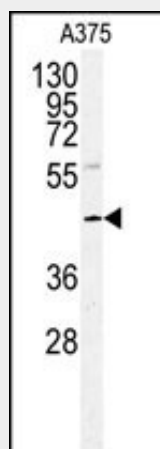
Mitochondrion matrix. Nucleus Note=Mainly localizes to the mitochondrial matrix; a small fraction localizes in the nucleus.

POLDIP2 Antibody (Center) - Protocols

Provided below are standard protocols that you may find useful for product applications.

- [Western Blot](#)
- [Blocking Peptides](#)
- [Dot Blot](#)
- [Immunohistochemistry](#)
- [Immunofluorescence](#)
- [Immunoprecipitation](#)
- [Flow Cytometry](#)
- [Cell Culture](#)

POLDIP2 Antibody (Center) - Images



Western blot analysis of POLDIP2 antibody (Center) (Cat.#AP7626c) in A375 cell line lysates (35ug/lane). POLDIP2 (arrow) was detected using the purified Pab.

POLDIP2 Antibody (Center) - Background

POLDIP2 is a protein that interacts with the DNA polymerase delta p50 subunit. This protein also interacts with proliferating cell nuclear antigen. Some transcripts of POLDIP2 gene overlap in a tail-to-tail orientation with the gene for tumor necrosis factor, alpha-induced protein 1 (TNFAIP1).

POLDIP2 Antibody (Center) - References

Cheng,X., Kanki,T. J. Biochem. 138 (6), 673-678 (2005)
Liu,L., Rodriguez-Belmonte,E.M. J. Biol. Chem. 278 (12), 10041-10047 (2003)