

c-KIT Antibody (C-term)
Purified Rabbit Polyclonal Antibody (Pab)
Catalog # AP7656b**Specification**

c-KIT Antibody (C-term) - Product Information

Application	WB, IHC-P,E
Primary Accession	P10721
Other Accession	Q2HWD6 , P43481 , Q99662
Reactivity	Human, Mouse
Predicted	Bovine, Pig
Host	Rabbit
Clonality	Polyclonal
Isotype	Rabbit IgG
Antigen Region	912-941

c-KIT Antibody (C-term) - Additional Information**Gene ID** 3815**Other Names**

Mast/stem cell growth factor receptor Kit, SCFR, Piebald trait protein, PBT, Proto-oncogene c-Kit, Tyrosine-protein kinase Kit, p145 c-kit, v-kit Hardy-Zuckerman 4 feline sarcoma viral oncogene homolog, CD117, KIT, SCFR

Target/Specificity

This c-KIT antibody is generated from rabbits immunized with a KLH conjugated synthetic peptide between 912-941 amino acids of human c-KIT.

Dilution

WB~~1:2000

IHC-P~~1:100

E~~Use at an assay dependent concentration.

Format

Purified polyclonal antibody supplied in PBS with 0.09% (W/V) sodium azide. This antibody is purified through a protein A column, followed by peptide affinity purification.

Storage

Maintain refrigerated at 2-8°C for up to 2 weeks. For long term storage store at -20°C in small aliquots to prevent freeze-thaw cycles.

Precautions

c-KIT Antibody (C-term) is for research use only and not for use in diagnostic or therapeutic procedures.

c-KIT Antibody (C-term) - Protein Information

Name KIT**Synonyms** SCFR

Function Tyrosine-protein kinase that acts as a cell-surface receptor for the cytokine KITLG/SCF and plays an essential role in the regulation of cell survival and proliferation, hematopoiesis, stem cell maintenance, gametogenesis, mast cell development, migration and function, and in melanogenesis. In response to KITLG/SCF binding, KIT can activate several signaling pathways. Phosphorylates PIK3R1, PLCG1, SH2B2/APS and CBL. Activates the AKT1 signaling pathway by phosphorylation of PIK3R1, the regulatory subunit of phosphatidylinositol 3-kinase. Activated KIT also transmits signals via GRB2 and activation of RAS, RAF1 and the MAP kinases MAPK1/ERK2 and/or MAPK3/ERK1. Promotes activation of STAT family members STAT1, STAT3, STAT5A and STAT5B. Activation of PLCG1 leads to the production of the cellular signaling molecules diacylglycerol and inositol 1,4,5- trisphosphate. KIT signaling is modulated by protein phosphatases, and by rapid internalization and degradation of the receptor. Activated KIT promotes phosphorylation of the protein phosphatases PTPN6/SHP-1 and PTPRU, and of the transcription factors STAT1, STAT3, STAT5A and STAT5B. Promotes phosphorylation of PIK3R1, CBL, CRK (isoform Crk-II), LYN, MAPK1/ERK2 and/or MAPK3/ERK1, PLCG1, SRC and SHC1.

Cellular Location

[Isoform 1]: Cell membrane; Single-pass type I membrane protein [Isoform 3]: Cytoplasm. Note=Detected in the cytoplasm of spermatozoa, especially in the equatorial and subacrosomal region of the sperm head.

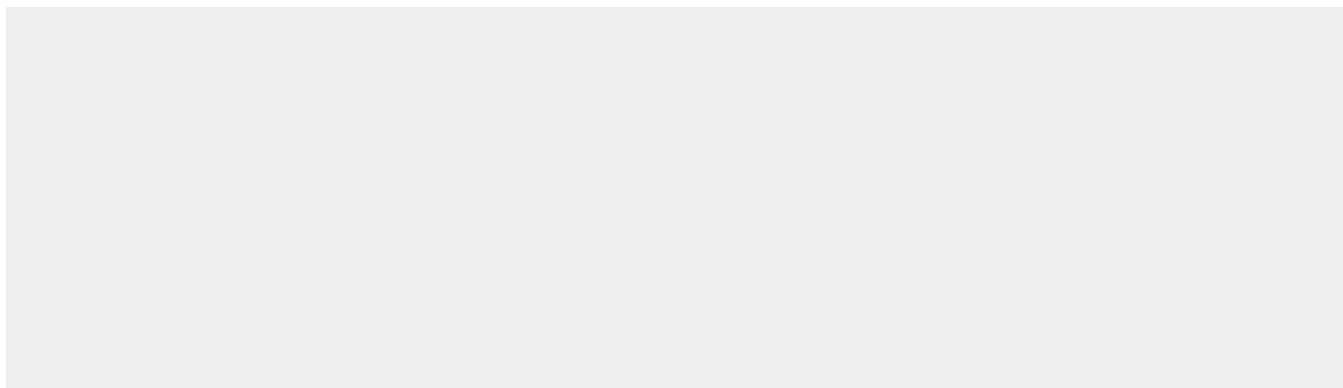
Tissue Location

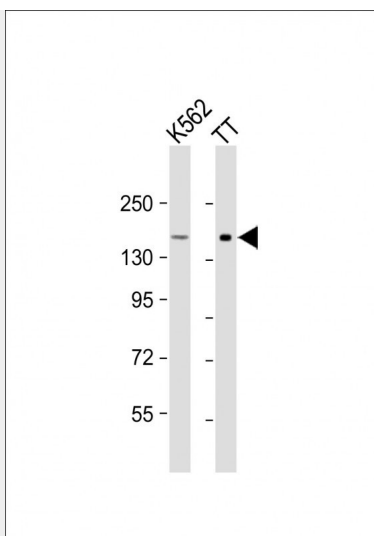
[Isoform 3]: In testis, detected in spermatogonia in the basal layer and in interstitial Leydig cells but not in Sertoli cells or spermatocytes inside the seminiferous tubules (at protein level) (PubMed:20601678). Expression is maintained in ejaculated spermatozoa (at protein level) (PubMed:20601678)

c-KIT Antibody (C-term) - Protocols

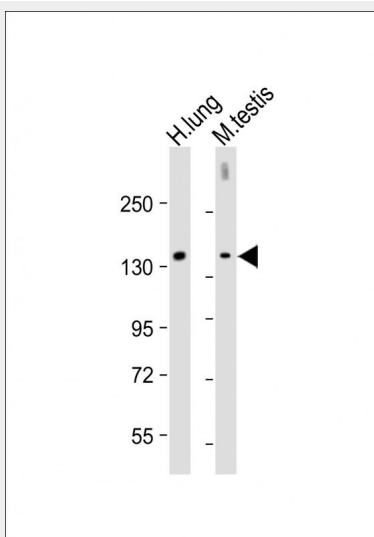
Provided below are standard protocols that you may find useful for product applications.

- [Western Blot](#)
- [Blocking Peptides](#)
- [Dot Blot](#)
- [Immunohistochemistry](#)
- [Immunofluorescence](#)
- [Immunoprecipitation](#)
- [Flow Cytometry](#)
- [Cell Culture](#)

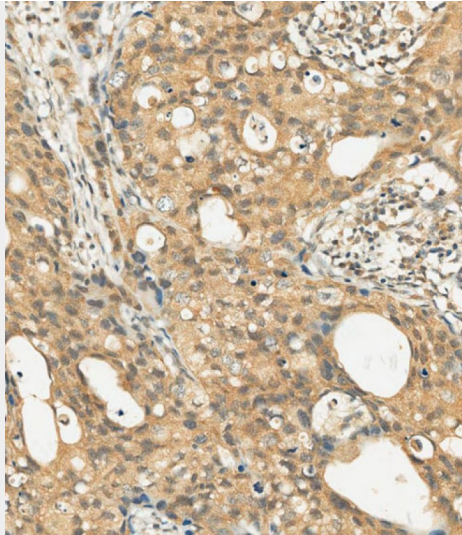
c-KIT Antibody (C-term) - Images



All lanes : Anti-c-KIT Antibody (C-term) at 1:1000 dilution Lane 1: K562 whole cell lysate Lane 2: TT whole cell lysate Lysates/proteins at 20 µg per lane. Secondary Goat Anti-Rabbit IgG, (H+L), Peroxidase conjugated at 1/10000 dilution. Predicted band size : 110 kDa Blocking/Dilution buffer: 5% NFDM/TBST.



All lanes : Anti-c-KIT Antibody (C-term) at 1:2000 dilution Lane 1: Human lung lysate Lane 2: Mouse testis lysate Lysates/proteins at 20 µg per lane. Secondary Goat Anti-Rabbit IgG, (H+L), Peroxidase conjugated at 1/10000 dilution. Predicted band size : 110 kDa Blocking/Dilution buffer: 5% NFDM/TBST.



AP7656b staining c-KIT in human breast carcinoma tissue sections by Immunohistochemistry (IHC-P - paraformaldehyde-fixed, paraffin-embedded sections). Samples were incubated with primary antibody (1/100) for 1 hours at room temperature. A undiluted biotinylated goat polyvalent antibody was used as the secondary antibody.

c-KIT Antibody (C-term) - Background

KIT encodes the human homolog of the proto-oncogene c-kit. C-kit was first identified as the cellular homolog of the feline sarcoma viral oncogene v-kit. KIT is a type 3 transmembrane receptor for MGF (mast cell growth factor, also known as stem cell factor). Mutations in KIT are associated with gastrointestinal stromal tumors, mast cell disease, acute myelogenous leukemia, and piebaldism.

c-KIT Antibody (C-term) - References

Wardelmann, E., et al., Int. J. Cancer 106(6):887-895 (2003).
Lennartsson, J., et al., Exp. Cell Res. 288(1):110-118 (2003).
Sakuma, Y., et al., Cancer Sci 94(6):486-491 (2003).
Araki, K., et al., Lung Cancer 40(2):173-180 (2003).
Voytyuk, O., et al., J. Biol. Chem. 278(11):9159-9166 (2003).