

PDGFRL Antibody (C-term)
Purified Rabbit Polyclonal Antibody (Pab)
Catalog # AP7668a**Specification**

PDGFRL Antibody (C-term) - Product Information

Application	WB, IHC-P,E
Primary Accession	Q15198
Reactivity	Human
Host	Rabbit
Clonality	Polyclonal
Isotype	Rabbit IgG
Calculated MW	41861
Antigen Region	328-357

PDGFRL Antibody (C-term) - Additional Information**Gene ID** 5157**Other Names**

Platelet-derived growth factor receptor-like protein, PDGFR-like protein, PDGF receptor beta-like tumor suppressor, PDGFRL, PRLTS

Target/Specificity

This PDGFRL antibody is generated from rabbits immunized with a KLH conjugated synthetic peptide between 328-357 amino acids from the C-terminal region of human PDGFRL.

Dilution

WB~~1:1000

IHC-P~~1:50~100

E~~Use at an assay dependent concentration.

Format

Purified polyclonal antibody supplied in PBS with 0.09% (W/V) sodium azide. This antibody is prepared by Saturated Ammonium Sulfate (SAS) precipitation followed by dialysis against PBS.

Storage

Maintain refrigerated at 2-8°C for up to 2 weeks. For long term storage store at -20°C in small aliquots to prevent freeze-thaw cycles.

Precautions

PDGFRL Antibody (C-term) is for research use only and not for use in diagnostic or therapeutic procedures.

PDGFRL Antibody (C-term) - Protein Information**Name** PDGFRL

Synonyms PRLTS**Cellular Location**

Secreted.

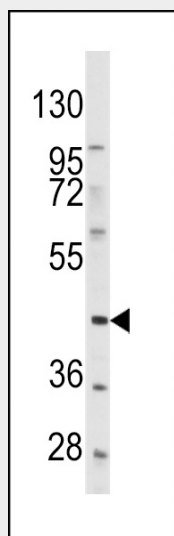
Tissue Location

Expressed in colon, lung and liver.

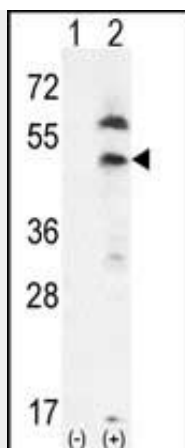
PDGFRL Antibody (C-term) - Protocols

Provided below are standard protocols that you may find useful for product applications.

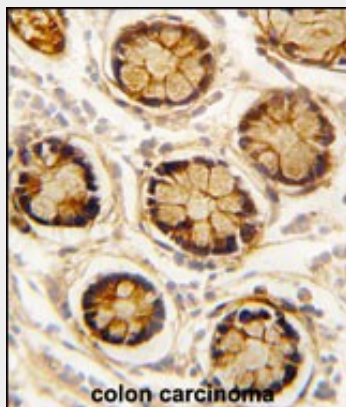
- [Western Blot](#)
- [Blocking Peptides](#)
- [Dot Blot](#)
- [Immunohistochemistry](#)
- [Immunofluorescence](#)
- [Immunoprecipitation](#)
- [Flow Cytometry](#)
- [Cell Culture](#)

PDGFRL Antibody (C-term) - Images

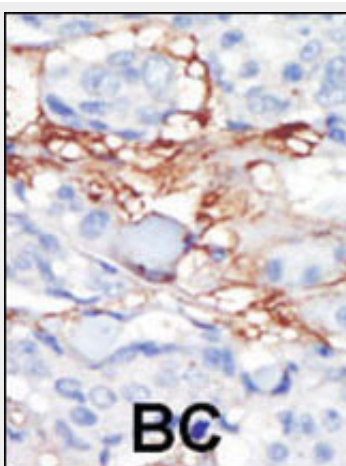
Western blot analysis of anti-PDGFRL Antibody (C-term)(Cat.#AP7668a) in HeLa cell line lysates (35ug/lane).PDGFRL(arrow) was detected using the purified Pab.



Western blot analysis of PDGFRL (arrow) using rabbit polyclonal PDGFRL-T343 (Cat.#AP7668a). 293 cell lysates (2 ug/lane) either nontransfected (Lane 1) or transiently transfected (Lane 2) with the PDGFRL gene.



Formalin-fixed and paraffin-embedded human colon carcinoma reacted with PDGFRL antibody (C-term) (Cat.#AP7668a), which was peroxidase-conjugated to the secondary antibody, followed by DAB staining. This data demonstrates the use of this antibody for immunohistochemistry; clinical relevance has not been evaluated.



Formalin-fixed and paraffin-embedded human cancer tissue reacted with the primary antibody, which was peroxidase-conjugated to the secondary antibody, followed by DAB staining. This data demonstrates the use of this antibody for immunohistochemistry; clinical relevance has not been evaluated. BC = breast carcinoma; HC = hepatocarcinoma.

PDGFRL Antibody (C-term) - Background

PDGFRL bears significant sequence similarity to the ligand binding domain of platelet-derived growth factor receptor beta. Mutations in the PDGFRL gene, or deletion of a chromosomal segment containing this gene, are associated with sporadic hepatocellular carcinomas, colorectal cancers, and non-small cell lung cancers. This suggests PDGFRL may function as a tumor suppressor.