

**RYK Antibody (Center C397)**  
**Purified Rabbit Polyclonal Antibody (Pab)**  
**Catalog # AP7677c**

**Specification**

---

**RYK Antibody (Center C397) - Product Information**

Application	WB,E
Primary Accession	<a href="#">P34925</a>
Reactivity	Human
Host	Rabbit
Clonality	Polyclonal
Isotype	Rabbit IgG
Calculated MW	67815
Antigen Region	383-410

**RYK Antibody (Center C397) - Additional Information**

**Gene ID** 6259

**Other Names**

Tyrosine-protein kinase RYK, RYK, JTK5A

**Target/Specificity**

This RYK antibody is generated from rabbits immunized with a KLH conjugated synthetic peptide between 383-410 amino acids from the Central region of human RYK.

**Dilution**

WB~~1:1000

**Format**

Purified polyclonal antibody supplied in PBS with 0.09% (W/V) sodium azide. This antibody is prepared by Saturated Ammonium Sulfate (SAS) precipitation followed by dialysis against PBS.

**Storage**

Maintain refrigerated at 2-8°C for up to 2 weeks. For long term storage store at -20°C in small aliquots to prevent freeze-thaw cycles.

**Precautions**

RYK Antibody (Center C397) is for research use only and not for use in diagnostic or therapeutic procedures.

**RYK Antibody (Center C397) - Protein Information**

**Name** RYK ([HGNC:10481](#))

**Synonyms** JTK5A

**Function** May be a coreceptor along with FZD8 of Wnt proteins, such as WNT1, WNT3, WNT3A

and WNT5A. Involved in neuron differentiation, axon guidance, corpus callosum establishment and neurite outgrowth. In response to WNT3 stimulation, receptor C-terminal cleavage occurs in its transmembrane region and allows the C-terminal intracellular product to translocate from the cytoplasm to the nucleus where it plays a crucial role in neuronal development.

#### Cellular Location

Membrane; Single-pass type I membrane protein. Nucleus. Cytoplasm. Note=In cells that have undergone neuronal differentiation, the C-terminal cleaved part is translocated from the cytoplasm to the nucleus.

#### Tissue Location

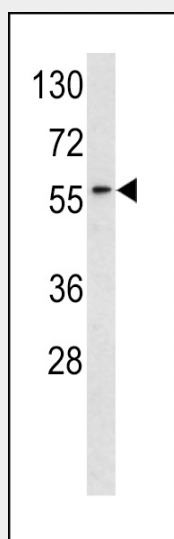
Observed in all the tissues examined.

### RYK Antibody (Center C397) - Protocols

Provided below are standard protocols that you may find useful for product applications.

- [Western Blot](#)
- [Blocking Peptides](#)
- [Dot Blot](#)
- [Immunohistochemistry](#)
- [Immunofluorescence](#)
- [Immunoprecipitation](#)
- [Flow Cytometry](#)
- [Cell Culture](#)

### RYK Antibody (Center C397) - Images



Western blot analysis of RYK antibody (Center C397) (Cat. #AP7677c) in HeLa cell line lysates (35ug/lane). RYK (arrow) was detected using the purified Pab.

### RYK Antibody (Center C397) - Background

RYK is an atypical member of the family of growth factor receptor protein tyrosine kinases, differing from other members at a number of conserved residues in the activation and nucleotide binding domains. This gene product belongs to a subfamily whose members do not appear to be regulated by phosphorylation in the activation segment. It has been suggested that mediation of

biological activity by recruitment of a signaling-competent auxiliary protein may occur through an as yet uncharacterized mechanism. A nine nucleotide insertion in some transcripts results in the SLG variant. It is not established whether this is a product of alternative splicing or a second gene, since evidence for a second gene or pseudogene on chromosome 17 exists.

#### **RYK Antibody (Center C397) - References**

- Trivier, E., et al., J. Biol. Chem. 277(25):23037-23043 (2002).  
Katso, R.M., et al., Mol. Cell. Biol. 19(9):6427-6440 (1999).  
Wang, X.C., et al., Mol. Med. 2(2):189-203 (1996).  
Tamagnone, L., et al., Oncogene 8(7):2009-2014 (1993).  
Stacker, S.A., et al., Oncogene 8(5):1347-1356 (1993).