

**FER Antibody (C-term)**  
**Purified Rabbit Polyclonal Antibody (Pab)**  
**Catalog # AP7704b****Specification**

---

**FER Antibody (C-term) - Product Information**

Application	FC, IF, IHC-P, WB,E
Primary Accession	<a href="#">P16591</a>
Reactivity	Human
Host	Rabbit
Clonality	Polyclonal
Isotype	Rabbit IgG
Calculated MW	94638
Antigen Region	782-811

**FER Antibody (C-term) - Additional Information****Gene ID** 2241**Other Names**

Tyrosine-protein kinase Fer, Feline encephalitis virus-related kinase FER, Fujinami poultry sarcoma/Feline sarcoma-related protein Fer, Proto-oncogene c-Fer, Tyrosine kinase 3, p94-Fer, FER, TYK3

**Target/Specificity**

This FER antibody is generated from rabbits immunized with a KLH conjugated synthetic peptide between 782-811 amino acids from the C-terminal region of human FER.

**Dilution**

FC~~1:10~50

IF~~1:10~50

IHC-P~~1:10~50

WB~~1:1000

E~~Use at an assay dependent concentration.

**Format**

Purified polyclonal antibody supplied in PBS with 0.09% (W/V) sodium azide. This antibody is prepared by Saturated Ammonium Sulfate (SAS) precipitation followed by dialysis against PBS.

**Storage**

Maintain refrigerated at 2-8°C for up to 2 weeks. For long term storage store at -20°C in small aliquots to prevent freeze-thaw cycles.

**Precautions**

FER Antibody (C-term) is for research use only and not for use in diagnostic or therapeutic procedures.

**FER Antibody (C-term) - Protein Information**

**Name** FER**Synonyms** TYK3

**Function** Tyrosine-protein kinase that acts downstream of cell surface receptors for growth factors and plays a role in the regulation of the actin cytoskeleton, microtubule assembly, lamellipodia formation, cell adhesion, cell migration and chemotaxis. Acts downstream of EGFR, KIT, PDGFRA and PDGFRB. Acts downstream of EGFR to promote activation of NF- kappa-B and cell proliferation. May play a role in the regulation of the mitotic cell cycle. Plays a role in the insulin receptor signaling pathway and in activation of phosphatidylinositol 3-kinase. Acts downstream of the activated FCER1 receptor and plays a role in FCER1 (high affinity immunoglobulin epsilon receptor)-mediated signaling in mast cells. Plays a role in the regulation of mast cell degranulation. Plays a role in leukocyte recruitment and diapedesis in response to bacterial lipopolysaccharide (LPS). Plays a role in synapse organization, trafficking of synaptic vesicles, the generation of excitatory postsynaptic currents and neuron-neuron synaptic transmission. Plays a role in neuronal cell death after brain damage. Phosphorylates CTTN, CTNND1, PTK2/FAK1, GAB1, PECAM1 and PTPN11. May phosphorylate JUP and PTPN1. Can phosphorylate STAT3, but the biological relevance of this depends on cell type and stimulus.

**Cellular Location**

Cytoplasm. Cytoplasm, cytoskeleton. Cell membrane; Peripheral membrane protein; Cytoplasmic side. Cell projection. Cell junction. Membrane; Peripheral membrane protein; Cytoplasmic side. Nucleus. Cytoplasm, cell cortex. Note=Associated with the chromatin. Detected on microtubules in polarized and motile vascular endothelial cells. Colocalizes with F-actin at the cell cortex. Colocalizes with PECAM1 and CTNND1 at nascent cell-cell contacts

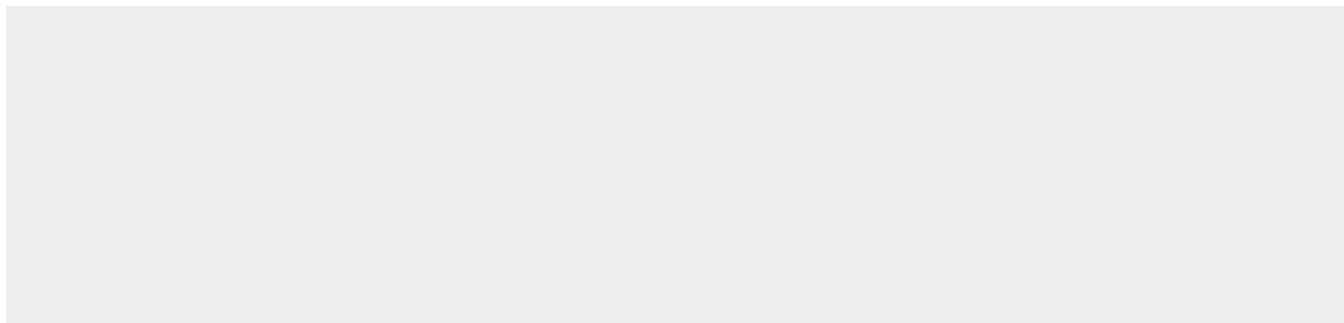
**Tissue Location**

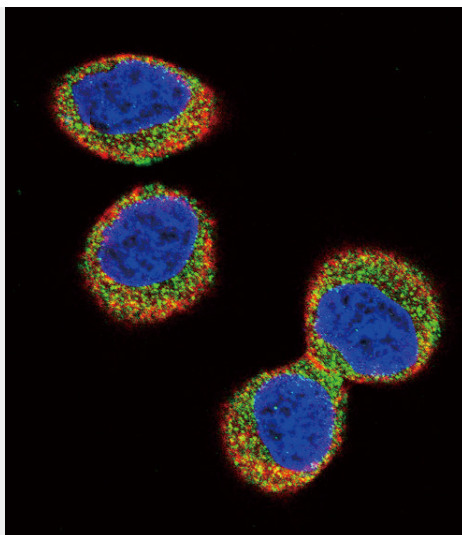
Isoform 1 is detected in normal colon and in fibroblasts (at protein level). Isoform 3 is detected in normal testis, in colon carcinoma-derived metastases in lung, liver and ovary, and in colon carcinoma and hepato carcinoma cell lines (at protein level) Isoform 3 is not detected in normal colon or in normal fibroblasts (at protein level). Widely expressed.

**FER Antibody (C-term) - Protocols**

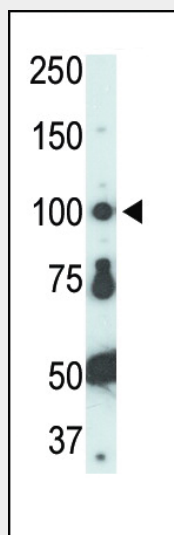
Provided below are standard protocols that you may find useful for product applications.

- [Western Blot](#)
- [Blocking Peptides](#)
- [Dot Blot](#)
- [Immunohistochemistry](#)
- [Immunofluorescence](#)
- [Immunoprecipitation](#)
- [Flow Cytometry](#)
- [Cell Culture](#)

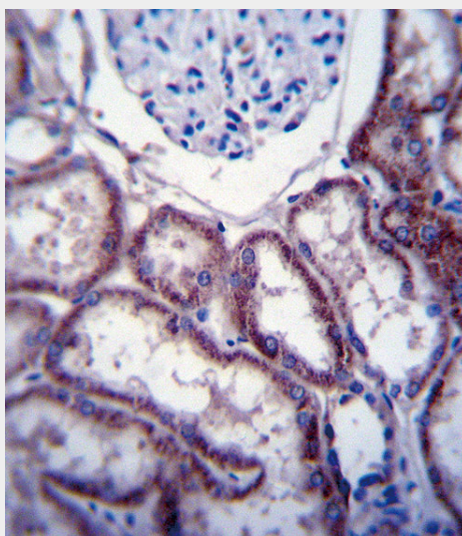
**FER Antibody (C-term) - Images**



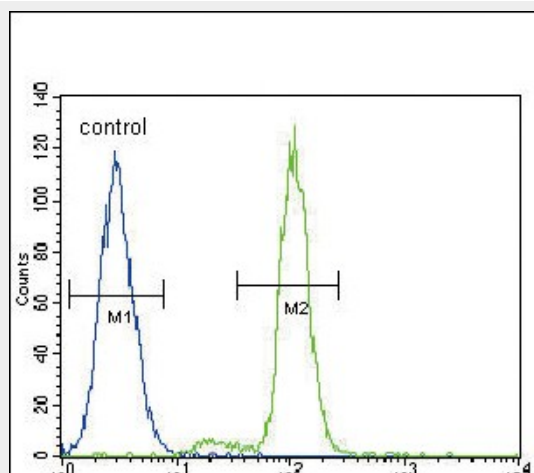
Confocal immunofluorescent analysis of FER Antibody (C-term)(Cat#AP7704b) with Hela cell followed by Alexa Fluor 488-conjugated goat anti-rabbit IgG (green). Actin filaments have been labeled with Alexa Fluor 555 phalloidin (red). DAPI was used to stain the cell nuclear (blue).



The anti-FER Pab (Cat. #AP7704b) is used in Western blot to detect FER in HL-60 cell lysate.



FER Antibody (C-term) (Cat. #AP7704b) immunohistochemistry analysis in formalin fixed and paraffin embedded human kidney tissue followed by peroxidase conjugation of the secondary antibody and DAB staining. This data demonstrates the use of FER Antibody (C-term) for immunohistochemistry. Clinical relevance has not been evaluated.



FER Antibody (C-term) (Cat. #AP7704b) flow cytometric analysis of A549 cells (right histogram) compared to a negative control cell (left histogram). FITC-conjugated goat-anti-rabbit secondary antibodies were used for the analysis.

#### **FER Antibody (C-term) - Background**

FER is a member of the FPS/FES family of nontransmembrane receptor tyrosine kinases. It regulates cell-cell adhesion and mediates signaling from the cell surface to the cytoskeleton via growth factor receptors.

#### **FER Antibody (C-term) - References**

- Greer, P., Nat. Rev. Mol. Cell Biol. 3(4):278-289 (2002).
- Rosato, R., et al., Mol. Cell. Biol. 18(10):5762-5770 (1998).
- Kim, L., et al., J. Biol. Chem. 273(36):23542-23548 (1998).
- Warrington, J.A., et al., Genomics 11(3):701-708 (1991).
- Morris, C., et al., Cytogenet. Cell Genet. 53(4):196-200 (1990).