

STK38L Antibody (C-term)
Purified Rabbit Polyclonal Antibody (Pab)
Catalog # AP7728b**Specification**

STK38L Antibody (C-term) - Product Information

| | |
|-------------------|------------------------|
| Application | WB,E |
| Primary Accession | O9Y2H1 |
| Other Accession | Q7TSE6 |
| Reactivity | Human |
| Predicted | Mouse |
| Host | Rabbit |
| Clonality | Polyclonal |
| Isotype | Rabbit IgG |
| Calculated MW | 54003 |
| Antigen Region | 408-437 |

STK38L Antibody (C-term) - Additional Information**Gene ID** 23012**Other Names**

Serine/threonine-protein kinase 38-like, NDR2 protein kinase, Nuclear Dbf2-related kinase 2, STK38L {ECO:0000312|EMBL:AAH286031}

Target/Specificity

This STK38L antibody is generated from rabbits immunized with a KLH conjugated synthetic peptide between 408-437 amino acids from the C-terminal region of human STK38L.

Dilution

WB~~1:1000

Format

Purified polyclonal antibody supplied in PBS with 0.09% (W/V) sodium azide. This antibody is prepared by Saturated Ammonium Sulfate (SAS) precipitation followed by dialysis against PBS.

Storage

Maintain refrigerated at 2-8°C for up to 2 weeks. For long term storage store at -20°C in small aliquots to prevent freeze-thaw cycles.

Precautions

STK38L Antibody (C-term) is for research use only and not for use in diagnostic or therapeutic procedures.

STK38L Antibody (C-term) - Protein Information**Name** STK38L {ECO:0000312|EMBL:AAH28603.1}

Function Involved in the regulation of structural processes in differentiating and mature neuronal cells.

Cellular Location

Cytoplasm. Cytoplasm, cytoskeleton. Membrane. Note=Associated with the actin cytoskeleton. Co-localizes with STK24/MST3 in the membrane

Tissue Location

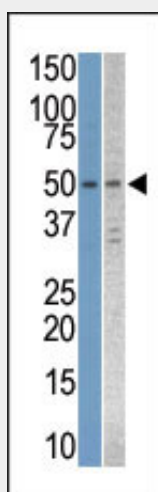
Ubiquitously expressed with highest levels observed in the thymus.

STK38L Antibody (C-term) - Protocols

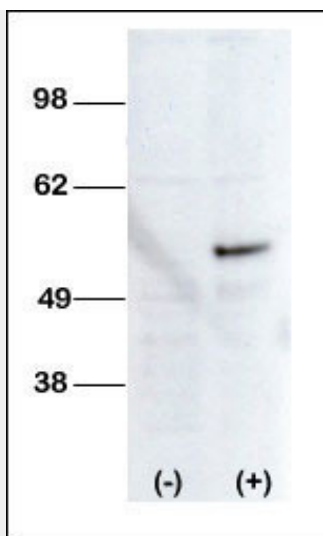
Provided below are standard protocols that you may find useful for product applications.

- [Western Blot](#)
- [Blocking Peptides](#)
- [Dot Blot](#)
- [Immunohistochemistry](#)
- [Immunofluorescence](#)
- [Immunoprecipitation](#)
- [Flow Cytometry](#)
- [Cell Culture](#)

STK38L Antibody (C-term) - Images



The anti-STK38L Pab (Cat. #AP7728b) is used in Western blot to detect STK38L in Jurkat and T47D cell line lysates.



Western blot analysis of anti-STK38L Pab (Cat. #AP7728b) transiently transfected HEK-293 cell line lysate (1ug/lane). STK38L pab (arrow) was detected using the purified Pab

STK38L Antibody (C-term) - Background

STK38L contains 12 protein kinase catalytic subdomains and a potential bipartite nuclear localization signal. Northern blot analysis revealed expression of a 3.9-kb transcript in all tissues tested, with the possible exception of adult brain. Highest expression was in peripheral blood leukocytes. Immunoblot and immunofluorescence microscopy demonstrated predominantly nuclear expression of a 55-kD protein.

STK38L Antibody (C-term) - References

Devroe, E., et al., J. Biol. Chem. 279(23):24444-24451 (2004).