

STYK1 Antibody (N-term)
Purified Rabbit Polyclonal Antibody (Pab)
Catalog # AP7729a**Specification**

STYK1 Antibody (N-term) - Product Information

Application	WB,E
Primary Accession	Q6J9G0
Other Accession	Q52LR3
Reactivity	Human, Mouse
Host	Rabbit
Clonality	Polyclonal
Isotype	Rabbit IgG
Calculated MW	47577
Antigen Region	31-64

STYK1 Antibody (N-term) - Additional Information**Gene ID** 55359**Other Names**

Tyrosine-protein kinase STYK1, Novel oncogene with kinase domain, Protein PK-unique, Serine/threonine/tyrosine kinase 1, STYK1, NOK

Target/Specificity

This STYK1 antibody is generated from rabbits immunized with a KLH conjugated synthetic peptide between 31-64 amino acids from the N-terminal region of human STYK1.

Dilution

WB~~1:1000

E~~Use at an assay dependent concentration.

Format

Purified polyclonal antibody supplied in PBS with 0.09% (W/V) sodium azide. This antibody is prepared by Saturated Ammonium Sulfate (SAS) precipitation followed by dialysis against PBS.

Storage

Maintain refrigerated at 2-8°C for up to 2 weeks. For long term storage store at -20°C in small aliquots to prevent freeze-thaw cycles.

Precautions

STYK1 Antibody (N-term) is for research use only and not for use in diagnostic or therapeutic procedures.

STYK1 Antibody (N-term) - Protein Information**Name** STYK1

Synonyms NOK

Function Probable tyrosine protein-kinase, which has strong transforming capabilities on a variety of cell lines. When overexpressed, it can also induce tumor cell invasion as well as metastasis in distant organs. May act by activating both MAP kinase and phosphatidylinositol 3'-kinases (PI3K) pathways (By similarity).

Cellular Location

Membrane; Single-pass membrane protein

Tissue Location

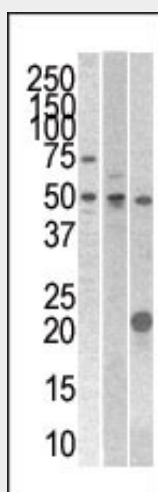
Widely expressed. Highly expressed in brain, placenta and prostate. Expressed in tumor cells such as hepatoma cells L-02, cervix carcinoma cells HeLa, ovary cancer cells Ho8910 and chronic myelogenous leukemia cells K-562, but not in other tumor cells such as epidermoid carcinoma (A-431). Undetectable in most normal lung tissues, widely expressed in lung cancers

STYK1 Antibody (N-term) - Protocols

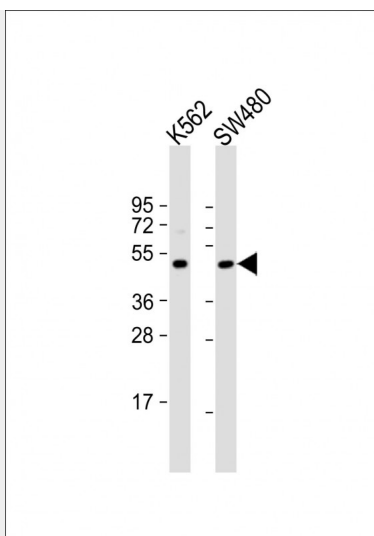
Provided below are standard protocols that you may find useful for product applications.

- [Western Blot](#)
- [Blocking Peptides](#)
- [Dot Blot](#)
- [Immunohistochemistry](#)
- [Immunofluorescence](#)
- [Immunoprecipitation](#)
- [Flow Cytometry](#)
- [Cell Culture](#)

STYK1 Antibody (N-term) - Images



The anti- STYK1 Pab (Cat. #AP7729a) is used in Western blot to detect STYK1 in 293 , CEM (center), and mouse kidney cell line/tissue lysates.



All lanes : Anti-STYK1 Antibody (N-term) at 1:1000 dilution Lane 1: K562 whole cell lysate Lane 2: SW480 whole cell lysate Lysates/proteins at 20 μ g per lane. Secondary Goat Anti-Rabbit IgG, (H+L), Peroxidase conjugated at 1/10000 dilution. Predicted band size : 48 kDa Blocking/Dilution buffer: 5% NFDM/TBST.

STYK1 Antibody (N-term) - Background

STYK1, a probable tyrosine protein-kinase, which has strong transforming capabilities on a variety of cell lines. When overexpressed, it can also induce tumor cell invasion as well as metastasis in distant organs. May act by activating both MAP kinase and phosphatidylinositol 3'-kinases (PI3K) pathways. It is widely expressed; highly expressed in brain, placenta and prostate. STYK1 is expressed in tumor cells such as hepatoma cells LO2, cervix carcinoma cells HeLa, ovary cancer cells Ho8910 and chronic myelogenous leukemia cells K562, but not in other tumor cells such as epidermoid carcinoma.

STYK1 Antibody (N-term) - References

Ye, X., et al., Mol. Biol. Rep. 30(2):91-96 (2003).