

CAMKK1 Antibody (Center)
Purified Rabbit Polyclonal Antibody (Pab)
Catalog # AP7768c**Specification**

CAMKK1 Antibody (Center) - Product Information

Application	WB,E
Primary Accession	Q8N5S9
Reactivity	Human, Mouse
Host	Rabbit
Clonality	Polyclonal
Isotype	Rabbit IgG
Calculated MW	55735
Antigen Region	337-369

CAMKK1 Antibody (Center) - Additional Information**Gene ID** 84254**Other Names**

Calcium/calmodulin-dependent protein kinase kinase 1, CaM-KK 1, CaM-kinase kinase 1, CaMKK 1, CaM-kinase IV kinase, Calcium/calmodulin-dependent protein kinase kinase alpha, CaM-KK alpha, CaM-kinase kinase alpha, CaMKK alpha, CAMKK1, CAMKKA

Target/Specificity

This CAMKK1 antibody is generated from rabbits immunized with a KLH conjugated synthetic peptide between 337-369 amino acids from the Central region of human CAMKK1.

Dilution

WB~~1:1000

E~~Use at an assay dependent concentration.

Format

Purified polyclonal antibody supplied in PBS with 0.09% (W/V) sodium azide. This antibody is prepared by Saturated Ammonium Sulfate (SAS) precipitation followed by dialysis against PBS.

Storage

Maintain refrigerated at 2-8°C for up to 2 weeks. For long term storage store at -20°C in small aliquots to prevent freeze-thaw cycles.

Precautions

CAMKK1 Antibody (Center) is for research use only and not for use in diagnostic or therapeutic procedures.

CAMKK1 Antibody (Center) - Protein Information**Name** CAMKK1

Synonyms CAMKKA

Function Calcium/calmodulin-dependent protein kinase that belongs to a proposed calcium-triggered signaling cascade involved in a number of cellular processes. Phosphorylates CAMK1, CAMK1D, CAMK1G and CAMK4. Involved in regulating cell apoptosis. Promotes cell survival by phosphorylating AKT1/PKB that inhibits pro-apoptotic BAD/Bcl2- antagonist of cell death.

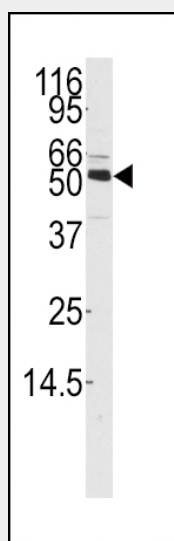
Cellular Location

Cytoplasm. Nucleus.

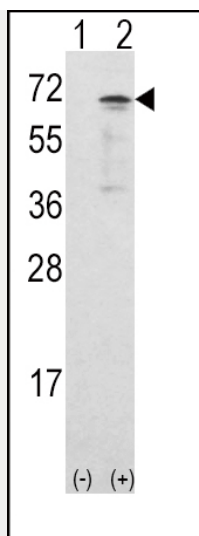
CAMKK1 Antibody (Center) - Protocols

Provided below are standard protocols that you may find useful for product applications.

- [Western Blot](#)
- [Blocking Peptides](#)
- [Dot Blot](#)
- [Immunohistochemistry](#)
- [Immunofluorescence](#)
- [Immunoprecipitation](#)
- [Flow Cytometry](#)
- [Cell Culture](#)

CAMKK1 Antibody (Center) - Images

Western blot analysis of anti-CAMKK1 Antibody (Center) (Cat.#AP7768c) in mouse thymus tissue lysates (35ug/lane). CAMKK1 (arrow) was detected using the purified Pab.



Western blot analysis of CAMKK1 (arrow) using rabbit polyclonal CAMKK1 Antibody (Center) (Cat.#AP7768c). 293 cell lysates (2 ug/lane) either nontransfected (Lane 1) or transiently transfected with the CAMKK1 gene (Lane 2).

CAMKK1 Antibody (Center) - Background

CAMKK1 belongs to the Serine/Threonine protein kinase family, and to the Ca(2+)/calmodulin-dependent protein kinase subfamily. This protein plays a role in the calcium/calmodulin-dependent (CaM) kinase cascade.

CAMKK1 Antibody (Center) - References

- Guest,C.B., PLoS ONE 3 (2), E1606 (2008)
- Rudd,M.F., Genome Res. 16 (6), 693-701 (2006)
- Ishikawa,Y., FEBS Lett. 550 (1-3), 57-63 (2003)
- Matsushita,M., J. Biol. Chem. 274 (15), 10086-10093 (1999)