

AREG Antibody (C-term)
Purified Rabbit Polyclonal Antibody (Pab)
Catalog # AP7776b**Specification**

AREG Antibody (C-term) - Product Information

Application	IHC-P, WB,E
Primary Accession	P15514
Other Accession	NP_001648
Reactivity	Human
Host	Rabbit
Clonality	Polyclonal
Isotype	Rabbit IgG
Calculated MW	27895
Antigen Region	222-252

AREG Antibody (C-term) - Additional Information**Gene ID** 374**Other Names**

Amphiregulin, AR, Colorectum cell-derived growth factor, CRDGF, AREG, SDGF

Target/Specificity

This AREG antibody is generated from rabbits immunized with a KLH conjugated synthetic peptide between 222-252 amino acids from the C-terminal region of human AREG.

Dilution

IHC-P~~1:10~50

WB~~1:1000

E~~Use at an assay dependent concentration.

Format

Purified polyclonal antibody supplied in PBS with 0.09% (W/V) sodium azide. This antibody is prepared by Saturated Ammonium Sulfate (SAS) precipitation followed by dialysis against PBS.

Storage

Maintain refrigerated at 2-8°C for up to 2 weeks. For long term storage store at -20°C in small aliquots to prevent freeze-thaw cycles.

Precautions

AREG Antibody (C-term) is for research use only and not for use in diagnostic or therapeutic procedures.

AREG Antibody (C-term) - Protein Information**Name** AREG ([HGNC:651](#))

Function Ligand of the EGF receptor/EGFR. Autocrine growth factor as well as a mitogen for a broad range of target cells including astrocytes, Schwann cells and fibroblasts.

Cellular Location

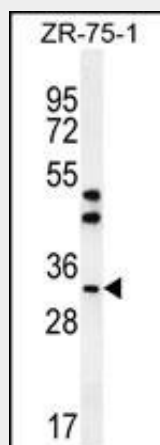
Membrane; Single-pass membrane protein.

AREG Antibody (C-term) - Protocols

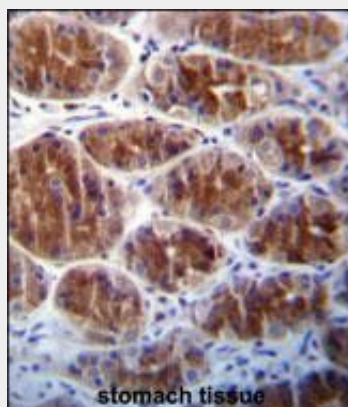
Provided below are standard protocols that you may find useful for product applications.

- [Western Blot](#)
- [Blocking Peptides](#)
- [Dot Blot](#)
- [Immunohistochemistry](#)
- [Immunofluorescence](#)
- [Immunoprecipitation](#)
- [Flow Cytometry](#)
- [Cell Culture](#)

AREG Antibody (C-term) - Images



AREG Antibody (C-term) (Cat.#AP7776b) western blot analysis in ZR-75-1 cell line lysates (35ug/lane). This demonstrates the AREG antibody detected the AREG protein (arrow).



AREG Antibody (C-term) (Cat. #AP7776b) immunohistochemistry analysis in formalin fixed and paraffin embedded human stomach tissue followed by peroxidase conjugation of the secondary

antibody and DAB staining. This data demonstrates the use of AREG Antibody (C-term) for immunohistochemistry. Clinical relevance has not been evaluated.

AREG Antibody (C-term) - Background

AREG is a member of the epidermal growth factor family. It is an autocrine growth factor as well as a mitogen for astrocytes, Schwann cells, and fibroblasts. It is related to epidermal growth factor (EGF) and transforming growth factor alpha (TGF-alpha). This protein interacts with the EGF/TGF-alpha receptor to promote the growth of normal epithelial cells and inhibits the growth of certain aggressive carcinoma cell lines. This protein is associated with a psoriasis-like skin phenotype.

AREG Antibody (C-term) - References

Shim, J.Y., J. Korean Med. Sci. 23 (5), 857-863 (2008)
Eckstein, N., J. Biol. Chem. 283 (2), 739-750 (2008)
Revillion, F., Ann. Oncol. 19 (1), 73-80 (2008)
Kimura, H., Nature 348 (6298), 257-260 (1990)