

CTGF Antibody (C-term)
Purified Rabbit Polyclonal Antibody (Pab)
Catalog # AP7778B**Specification**

CTGF Antibody (C-term) - Product Information

Application	IHC-P, WB,E
Primary Accession	P29279
Other Accession	O9R1E9 , O19113 , P29268 , O18739 , NP_001892
Reactivity	Human
Predicted	Bovine, Mouse, Pig, Rat
Host	Rabbit
Clonality	Polyclonal
Isotype	Rabbit IgG
Antigen Region	315-349

CTGF Antibody (C-term) - Additional Information**Gene ID** 1490**Other Names**

Connective tissue growth factor, CCN family member 2, Hypertrophic chondrocyte-specific protein 24, Insulin-like growth factor-binding protein 8, IBP-8, IGF-binding protein 8, IGFBP-8, CTGF, CCN2, HCS24, IGFBP8

Target/Specificity

This CTGF antibody is generated from rabbits immunized with a KLH conjugated synthetic peptide between 315-349 amino acids from the C-terminal region of human CTGF.

Dilution

IHC-P~~1:10~50

WB~~1:1000

E~~Use at an assay dependent concentration.

Format

Purified polyclonal antibody supplied in PBS with 0.09% (W/V) sodium azide. This antibody is prepared by Saturated Ammonium Sulfate (SAS) precipitation followed by dialysis against PBS.

Storage

Maintain refrigerated at 2-8°C for up to 2 weeks. For long term storage store at -20°C in small aliquots to prevent freeze-thaw cycles.

Precautions

CTGF Antibody (C-term) is for research use only and not for use in diagnostic or therapeutic procedures.

CTGF Antibody (C-term) - Protein Information

Name CCN2 ([HGNC:2500](#))

Function Major connective tissue mitogen secreted by vascular endothelial cells. Promotes proliferation and differentiation of chondrocytes. Is involved in the stimulation of osteoblast differentiation and has a critical role in osteogenesis (PubMed:[39414788](#)). Mediates heparin- and divalent cation-dependent cell adhesion in many cell types including fibroblasts, myofibroblasts, endothelial and epithelial cells. Enhances fibroblast growth factor- induced DNA synthesis.

Cellular Location

Secreted, extracellular space, extracellular matrix {ECO:0000250|UniProtKB:P29268}. Secreted

Tissue Location

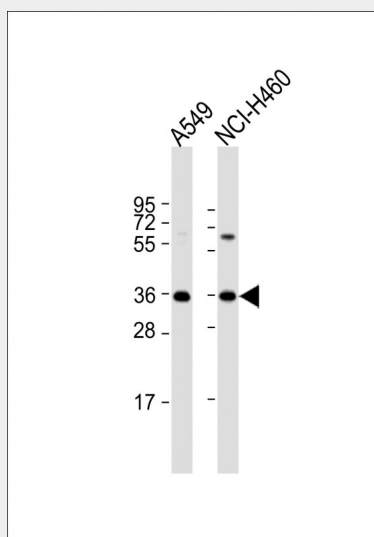
Expressed in bone marrow and thymic cells. Also expressed one of two Wilms tumors tested.

CTGF Antibody (C-term) - Protocols

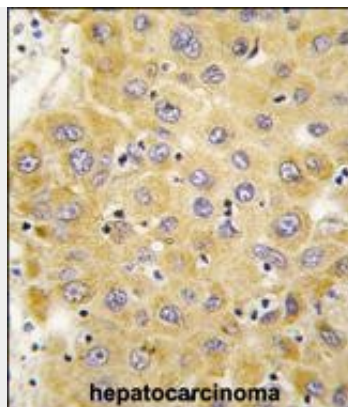
Provided below are standard protocols that you may find useful for product applications.

- [Western Blot](#)
- [Blocking Peptides](#)
- [Dot Blot](#)
- [Immunohistochemistry](#)
- [Immunofluorescence](#)
- [Immunoprecipitation](#)
- [Flow Cytometry](#)
- [Cell Culture](#)

CTGF Antibody (C-term) - Images



All lanes : Anti-CTGF Antibody (C-term) at 1:1000 dilution Lane 1: A549 whole cell lysate Lane 2: NCI-H460 whole cell lysate Lysates/proteins at 20 µg per lane. Secondary Goat Anti-Rabbit IgG, (H+L), Peroxidase conjugated at 1/10000 dilution. Predicted band size : 38 kDa Blocking/Dilution buffer: 5% NFDM/TBST.



Formalin-fixed and paraffin-embedded human hepatocarcinoma tissue reacted with CTGF antibody (C-term) (Cat.#AP7778b), which was peroxidase-conjugated to the secondary antibody, followed by DAB staining. This data demonstrates the use of this antibody for immunohistochemistry; clinical relevance has not been evaluated.

CTGF Antibody (C-term) - Background

Connective tissue growth factor (CTGF), a member of the CCN family of secreted matricellular proteins, regulates fibrosis, angiogenesis, cell proliferation, apoptosis, tumor growth, and metastasis.

CTGF Antibody (C-term) - References

Li,M.H., Mol. Cancer Res. 6 (10), 1649-1656 (2008)
Bogatkevich,G.S., Am. J. Physiol. Lung Cell Mol. Physiol. 295 (4), L603-L611 (2008)
Zhang,P., Tohoku J. Exp. Med. 215 (3), 199-206 (2008)

CTGF Antibody (C-term) - Citations

- [BHLHE40 confers a pro-survival and pro-metastatic phenotype to breast cancer cells by modulating HBEGF secretion.](#)
- [miR-550a-3-5p acts as a tumor suppressor and reverses BRAF inhibitor resistance through the direct targeting of YAP.](#)