

**LTBP1 Antibody (C-term)**  
**Purified Rabbit Polyclonal Antibody (Pab)**  
**Catalog # AP7780B****Specification**

---

**LTBP1 Antibody (C-term) - Product Information**

Application	WB, IHC-P,E
Primary Accession	<a href="#">Q14766</a>
Reactivity	Human, Mouse
Host	Rabbit
Clonality	Polyclonal
Isotype	Rabbit IgG
Antigen Region	1493-1525

**LTBP1 Antibody (C-term) - Additional Information****Gene ID** 4052**Other Names**

Latent-transforming growth factor beta-binding protein 1, LTBP-1, Transforming growth factor beta-1-binding protein 1, TGF-beta1-BP-1, LTBP1

**Target/Specificity**

This LTBP1 antibody is generated from rabbits immunized with a KLH conjugated synthetic peptide between 1493-1525 amino acids from the C-terminal region of human LTBP1.

**Dilution**

WB~~1:1000  
IHC-P~~1:10~50

**Format**

Purified polyclonal antibody supplied in PBS with 0.09% (W/V) sodium azide. This antibody is prepared by Saturated Ammonium Sulfate (SAS) precipitation followed by dialysis against PBS.

**Storage**

Maintain refrigerated at 2-8°C for up to 2 weeks. For long term storage store at -20°C in small aliquots to prevent freeze-thaw cycles.

**Precautions**

LTBP1 Antibody (C-term) is for research use only and not for use in diagnostic or therapeutic procedures.

**LTBP1 Antibody (C-term) - Protein Information****Name** LTBP1 ([HGNC:6714](#))

**Function** Key regulator of transforming growth factor beta (TGFB1, TGFB2 and TGFB3) that controls TGF-beta activation by maintaining it in a latent state during storage in extracellular

space (PubMed:[2022183](#), PubMed:[8617200](#), PubMed:[8939931](#)). Associates specifically via disulfide bonds with the Latency-associated peptide (LAP), which is the regulatory chain of TGF-beta, and regulates integrin-dependent activation of TGF-beta (PubMed:[8617200](#), PubMed:[8939931](#), PubMed:[15184403](#)). Outcompeted by LRRC32/GARP for binding to LAP regulatory chain of TGF-beta (PubMed:[22278742](#)).

#### **Cellular Location**

Secreted. Secreted, extracellular space, extracellular matrix

#### **Tissue Location**

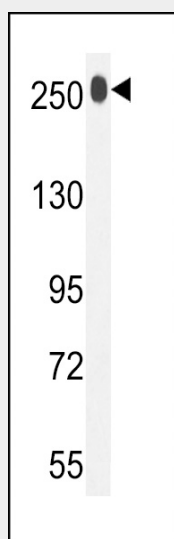
Expressed in the aorta (at protein level) (PubMed:17293099). Isoform Long: Expressed in fibroblasts (PubMed:17293099).

### **LTBP1 Antibody (C-term) - Protocols**

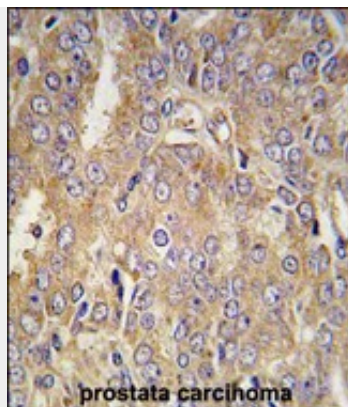
Provided below are standard protocols that you may find useful for product applications.

- [Western Blot](#)
- [Blocking Peptides](#)
- [Dot Blot](#)
- [Immunohistochemistry](#)
- [Immunofluorescence](#)
- [Immunoprecipitation](#)
- [Flow Cytometry](#)
- [Cell Culture](#)

### **LTBP1 Antibody (C-term) - Images**



LTBP1 Antibody (C-term) (Cat.#AP7780b) western blot analysis in mouse bladder tissue lysates (35ug/lane). This demonstrates the LTBP1 antibody detected the LTBP1 protein (arrow).



Formalin-fixed and paraffin-embedded human prostata carcinoma tissue reacted with LTBP1 antibody (C-term) (Cat.#AP7780b), which was peroxidase-conjugated to the secondary antibody, followed by DAB staining. This data demonstrates the use of this antibody for immunohistochemistry; clinical relevance has not been evaluated.

#### **LTBP1 Antibody (C-term) - Background**

LTBP1 may be involved in the assembly, secretion and targeting of TGFB1 to sites at which it is stored and/or activated. This protein may play critical roles in controlling and directing the activity of TGFB1, and it may have a structural role in the extra cellular matrix (ECM).

#### **LTBP1 Antibody (C-term) - References**

Olofsson A., J. Biol. Chem. 270:31294-31297(1995)  
Kanzaki T., Cell 61:1051-1061(1990)  
Isogai Z., J. Biol. Chem. 278:2750-2757(2003)  
Oklu R., Biochem. J. 352:601-610(2000)

#### **LTBP1 Antibody (C-term) - Citations**

- [Proteomic profiling of androgen-independent prostate cancer cell lines reveals a role for protein S during the development of high grade and castration-resistant prostate cancer.](#)