

WBP2 Antibody (N-term)
Purified Rabbit Polyclonal Antibody (Pab)
Catalog # AP7786a**Specification**

WBP2 Antibody (N-term) - Product Information

Application	IHC-P, WB,E
Primary Accession	Q969T9
Other Accession	Q8R478 , P97765
Reactivity	Human
Predicted	Mouse, Rat
Host	Rabbit
Clonality	Polyclonal
Isotype	Rabbit IgG
Calculated MW	28087
Antigen Region	19-47

WBP2 Antibody (N-term) - Additional Information**Gene ID** 23558**Other Names**

WW domain-binding protein 2, WBP-2, WBP2

Target/Specificity

This WBP2 antibody is generated from rabbits immunized with a KLH conjugated synthetic peptide between 19-47 amino acids from the N-terminal region of human WBP2.

Dilution

IHC-P~~1:50~100

WB~~1:1000

E~~Use at an assay dependent concentration.

Format

Purified polyclonal antibody supplied in PBS with 0.09% (W/V) sodium azide. This antibody is prepared by Saturated Ammonium Sulfate (SAS) precipitation followed by dialysis against PBS.

Storage

Maintain refrigerated at 2-8°C for up to 2 weeks. For long term storage store at -20°C in small aliquots to prevent freeze-thaw cycles.

Precautions

WBP2 Antibody (N-term) is for research use only and not for use in diagnostic or therapeutic procedures.

WBP2 Antibody (N-term) - Protein Information**Name** WBP2 ([HGNC:12738](#))

Function Acts as a transcriptional coactivator of estrogen and progesterone receptors (ESR1 and PGR) upon hormone activation (PubMed:[16772533](#)). In presence of estrogen, binds to ESR1-responsive promoters (PubMed:[16772533](#)). Synergizes with YAP1 to enhance PGR activity (PubMed:[16772533](#)). Modulates expression of post-synaptic scaffolding proteins via regulation of ESR1, ESR2 and PGR (By similarity).

Cellular Location

Cytoplasm. Nucleus. Note=Translocates from cytoplasm to nucleus when phosphorylated.

Tissue Location

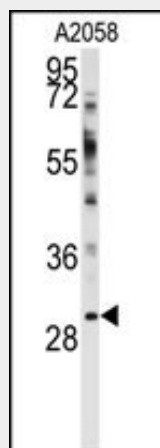
Ubiquitous.

WBP2 Antibody (N-term) - Protocols

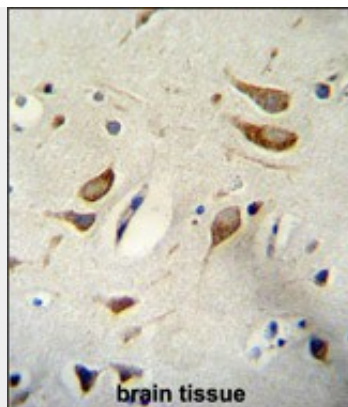
Provided below are standard protocols that you may find useful for product applications.

- [Western Blot](#)
- [Blocking Peptides](#)
- [Dot Blot](#)
- [Immunohistochemistry](#)
- [Immunofluorescence](#)
- [Immunoprecipitation](#)
- [Flow Cytometry](#)
- [Cell Culture](#)

WBP2 Antibody (N-term) - Images



Western blot analysis of anti-WBP2 Antibody (N-term) (Cat.#AP7786a) in A2058 cell line lysates (35ug/lane). WBP2 (arrow) was detected using the purified Pab.



WBP2 Antibody (N-term) (Cat. #AP7786A) immunohistochemistry analysis in formalin fixed and paraffin embedded human brain tissue followed by peroxidase conjugation of the secondary antibody and DAB staining. This data demonstrates the use of WBP2 Antibody (N-term) for immunohistochemistry. Clinical relevance has not been evaluated.

WBP2 Antibody (N-term) - Background

The globular WW domain is composed of 38 to 40 semiconserved amino acids shared by proteins of diverse functions including structural, regulatory, and signaling proteins. The domain is involved in mediating protein-protein interactions through the binding of polyproline ligands. WBP2 is a WW domain binding protein, which binds to the WW domain of Yes kinase-associated protein by its PY motifs. The function of this protein has not been determined.

WBP2 Antibody (N-term) - References

Dhananjayan, S.C., Mol. Endocrinol. 20 (10), 2343-2354 (2006)
Nitsch, R., Biochem. J. 377 (PT 3), 553-560 (2004)
Jolliffe, C.N., Biochem. J. 351 PT 3, 557-565 (2000)