

APOC2 Antibody (Center)
Affinity Purified Rabbit Polyclonal Antibody (Pab)
Catalog # AP7796c

Specification

APOC2 Antibody (Center) - Product Information

Application	IHC-P, WB,E
Primary Accession	P02655
Other Accession	P18658
Reactivity	Human
Predicted	Monkey
Host	Rabbit
Clonality	Polyclonal
Isotype	Rabbit IgG
Calculated MW	11284
Antigen Region	45-73

APOC2 Antibody (Center) - Additional Information

Gene ID 344

Other Names

Apolipoprotein C-II, Apo-CII, ApoC-II, Apolipoprotein C2, Proapolipoprotein C-II, ProapoC-II, APOC2, APC2

Target/Specificity

This APOC2 antibody is generated from rabbits immunized with a KLH conjugated synthetic peptide between 45-73 amino acids from the Central region of human APOC2.

Dilution

IHC-P~~1:10~50

WB~~1:1000

E~~Use at an assay dependent concentration.

Format

Purified polyclonal antibody supplied in PBS with 0.09% (W/V) sodium azide. This antibody is purified through a protein A column, followed by peptide affinity purification.

Storage

Maintain refrigerated at 2-8°C for up to 2 weeks. For long term storage store at -20°C in small aliquots to prevent freeze-thaw cycles.

Precautions

APOC2 Antibody (Center) is for research use only and not for use in diagnostic or therapeutic procedures.

APOC2 Antibody (Center) - Protein Information

Name APOC2

Synonyms APC2

Function Component of chylomicrons, very low-density lipoproteins (VLDL), low-density lipoproteins (LDL), and high-density lipoproteins (HDL) in plasma. Plays an important role in lipoprotein metabolism as an activator of lipoprotein lipase. Both proapolipoprotein C-II and apolipoprotein C-II can activate lipoprotein lipase. In normolipidemic individuals, it is mainly distributed in the HDL, whereas in hypertriglyceridemic individuals, predominantly found in the VLDL and LDL.

Cellular Location
Secreted.

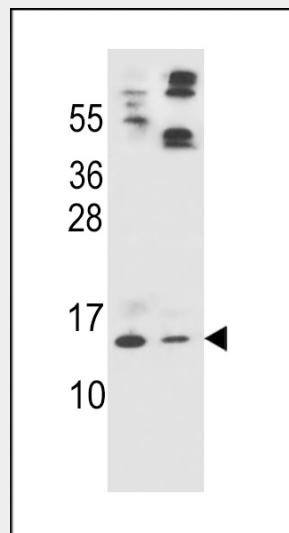
Tissue Location
Liver and intestine..

APOC2 Antibody (Center) - Protocols

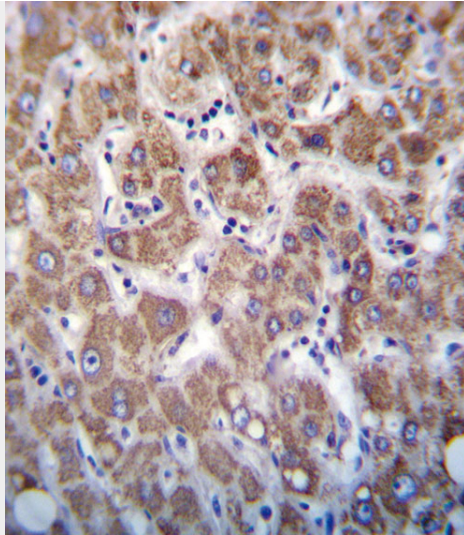
Provided below are standard protocols that you may find useful for product applications.

- [Western Blot](#)
- [Blocking Peptides](#)
- [Dot Blot](#)
- [Immunohistochemistry](#)
- [Immunofluorescence](#)
- [Immunoprecipitation](#)
- [Flow Cytometry](#)
- [Cell Culture](#)

APOC2 Antibody (Center) - Images



APOC2 Antibody (Center) (Cat. #AP7796c) western blot analysis in HL-60(lane 1),A549(lane 2) cell line lysates (35ug/lane).This demonstrates the APOC2 antibody detected the APOC2 protein (arrow).



APOC2 Antibody (Center) (Cat. #AP7796c) immunohistochemistry analysis in formalin fixed and paraffin embedded human liver tissue followed by peroxidase conjugation of the secondary antibody and DAB staining. This data demonstrates the use of APOC2 Antibody (Center) for immunohistochemistry. Clinical relevance has not been evaluated.

APOC2 Antibody (Center) - Background

APOC2 is secreted in plasma where it is a component of very low density lipoprotein. The protein activates the enzyme lipoprotein lipase, which hydrolyzes triglycerides and thus provides free fatty acids for cells. Mutations in the gene encoding this protein cause hyperlipoproteinemia type IB, characterized by hypertriglyceridemia, xanthomas, and increased risk of pancreatitis and early atherosclerosis.

APOC2 Antibody (Center) - References

Bahri, R., *Lipids Health Dis* 7, 46 (2008) Hegele, R.A., *Dis. Markers* 9 (2), 73-80 (1991)
Bengtsson-Olivecrona, G., *Eur. J. Biochem.* 192 (2), 515-521 (1990)