

BRAF Antibody (T400)
Affinity Purified Rabbit Polyclonal Antibody (Pab)
Catalog # AP7810E**Specification**

BRAF Antibody (T400) - Product Information

Application	IHC-P, WB,E
Primary Accession	P15056
Other Accession	P28028
Reactivity	Human, Mouse
Predicted	Mouse
Host	Rabbit
Clonality	Polyclonal
Isotype	Rabbit IgG
Antigen Region	379-408

BRAF Antibody (T400) - Additional Information**Gene ID** 673**Other Names**

Serine/threonine-protein kinase B-raf, Proto-oncogene B-Raf, p94, v-Raf murine sarcoma viral oncogene homolog B1, BRAF, BRAF1, RAFB1

Target/Specificity

This BRAF antibody is generated from rabbits immunized with a KLH conjugated synthetic peptide between 379-408 amino acids from human BRAF.

Dilution

IHC-P~~1:100

WB~~1:500

E~~Use at an assay dependent concentration.

Format

Purified polyclonal antibody supplied in PBS with 0.09% (W/V) sodium azide. This antibody is purified through a protein A column, followed by peptide affinity purification.

Storage

Maintain refrigerated at 2-8°C for up to 2 weeks. For long term storage store at -20°C in small aliquots to prevent freeze-thaw cycles.

Precautions

BRAF Antibody (T400) is for research use only and not for use in diagnostic or therapeutic procedures.

BRAF Antibody (T400) - Protein Information**Name** BRAF ([HGNC:1097](#))

Synonyms BRAF1, RAFB1

Function Protein kinase involved in the transduction of mitogenic signals from the cell membrane to the nucleus (Probable). Phosphorylates MAP2K1, and thereby activates the MAP kinase signal transduction pathway (PubMed:[21441910](#), PubMed:[29433126](#)). Phosphorylates PFKFB2 (PubMed:[36402789](#)). May play a role in the postsynaptic responses of hippocampal neurons (PubMed:[1508179](#)).

Cellular Location

Nucleus. Cytoplasm. Cell membrane. Note=Colocalizes with RGS14 and RAF1 in both the cytoplasm and membranes.

Tissue Location

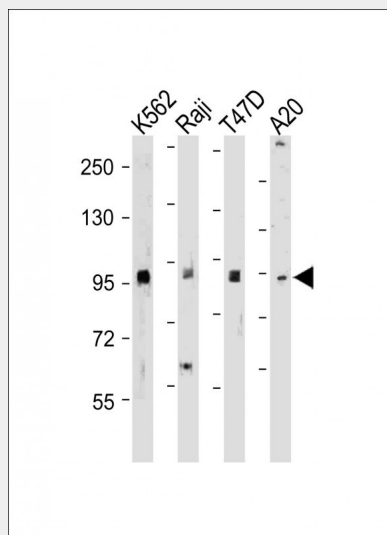
Brain and testis.

BRAF Antibody (T400) - Protocols

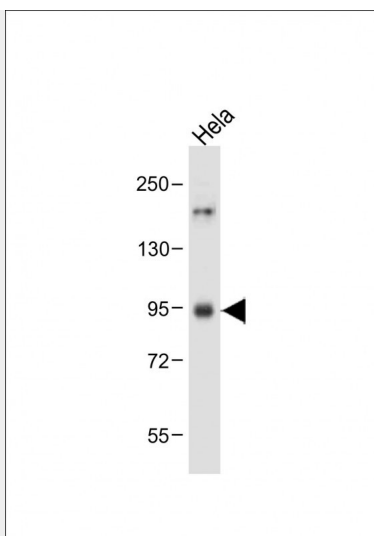
Provided below are standard protocols that you may find useful for product applications.

- [Western Blot](#)
- [Blocking Peptides](#)
- [Dot Blot](#)
- [Immunohistochemistry](#)
- [Immunofluorescence](#)
- [Immunoprecipitation](#)
- [Flow Cytometry](#)
- [Cell Culture](#)

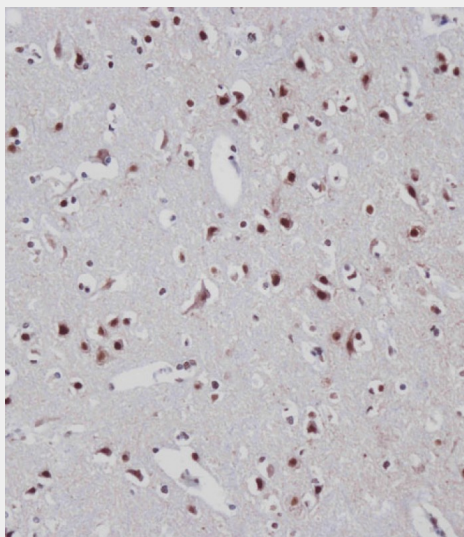
BRAF Antibody (T400) - Images



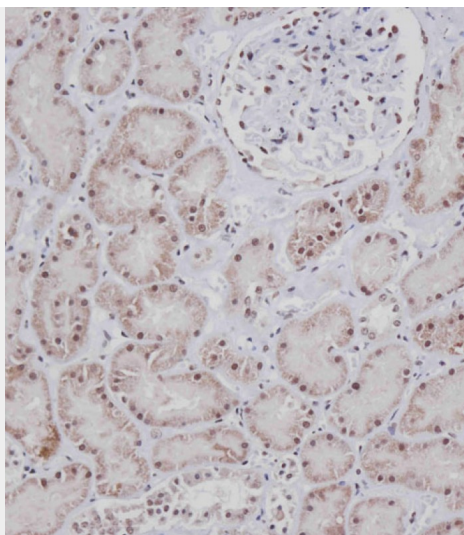
All lanes : Anti-BRAF Antibody (T400) at 1:500-2000 dilution Lane 1: K562 whole cell lysate Lane 2: Raji whole cell lysate Lane 3: T47D whole cell lysate Lane 4: A20 whole cell lysate Lysates/proteins at 20 µg per lane. Secondary Goat Anti-Rabbit IgG, (H+L), Peroxidase conjugated at 1/10000 dilution. Predicted band size : 84 kDa Blocking/Dilution buffer: 5% NFDM/TBST.



Anti-BRAF Antibody (T400) at 1:500 dilution + HeLa whole cell lysate Lysates/proteins at 20 μ g per lane. Secondary Goat Anti-Rabbit IgG, (H+L), Peroxidase conjugated at 1/10000 dilution. Predicted band size : 84 kDa Blocking/Dilution buffer: 5% NFDM/TBST.



Immunohistochemical analysis of AP7810E on paraffin-embedded Human brain tissue. Tissue was fixed with formaldehyde at room temperature. Heat induced epitope retrieval was performed by EDTA buffer (pH9. 0). Samples were incubated with primary antibody(1:100) for 1 hour at room temperature. Undiluted CRF Anti-Polyvalent HRP Polymer antibody was used as the secondary antibody.



Immunohistochemical analysis of AP7810E on paraffin-embedded Human kidney tissue. Tissue was fixed with formaldehyde at room temperature. Heat induced epitope retrieval was performed by EDTA buffer (pH9. 0). Samples were incubated with primary antibody(1:100) for 1 hour at room temperature. Undiluted CRF Anti-Polyvalent HRP Polymer antibody was used as the secondary antibody.

BRAF Antibody (T400) - Background

BRAF, a member of the RAF subfamily of Ser/Thr protein kinases, is involved in the transduction of mitogenic signals from the cell membrane to the nucleus. It may play a role in the postsynaptic responses of hippocampal neurons. This cytoplasmic protein is expressed in brain and testis. Defects in BRAF are involved in a wide range of cancers including lung cancer and non-Hodgkin lymphoma (NHL). This protein contains 1 zinc-dependent phorbol-ester and DAG binding domain.

BRAF Antibody (T400) - References

Hingorani, S.R., et al., Cancer Res. 63(17):5198-5202 (2003).
Lee, J.W., et al., Br. J. Cancer 89(10):1958-1960 (2003).
Davies, H., et al., Nature 417(6892):949-954 (2002).
Naoki, K., et al., Cancer Res. 62(23):7001-7003 (2002).
Stephens, R.M., et al., Mol. Cell. Biol. 12(9):3733-3742 (1992).